



Ireland's Destination Earth Workshop
4th October 2023

Local Digital Twins for Engagement and Evidence- based Decision Making

Presented by

Dr. Mani Dhingra, Smart Cities Digital Twin Manager, Dublin City Council

Ms. Aleksandra Kocon, Smart Cities Technician, Dublin City Council

Ms. Grace D'Arcy, Engagement Programme Manager, Smart Docklands



Comhairle Cathrach
Bhaile Átha Cliath
Dublin City Council



SMART DUBLIN

An initiative of the **FOUR DUBLIN LOCAL AUTHORITIES** to engage with smart technology providers, researchers and citizens to solve challenges and improve city life.



Comhairle Cathrach
Bhaile Átha Cliath
Dublin City Council



Comhairle Contae
Átha Cliath Theas
South Dublin County Council

Comhairle Contae
Fhine Gall
Fingal County
Council



Comhairle Contae County Council

Future is happening now!!



Smart Office Optimisation

5G Mobile Indoor

Smart Bike Stands

Smart Bench

3D AR VR Model

Cyclist Prioritisation at Junctions

5G Mobile Outdoor

Smart Bins

Smart Gully Monitoring

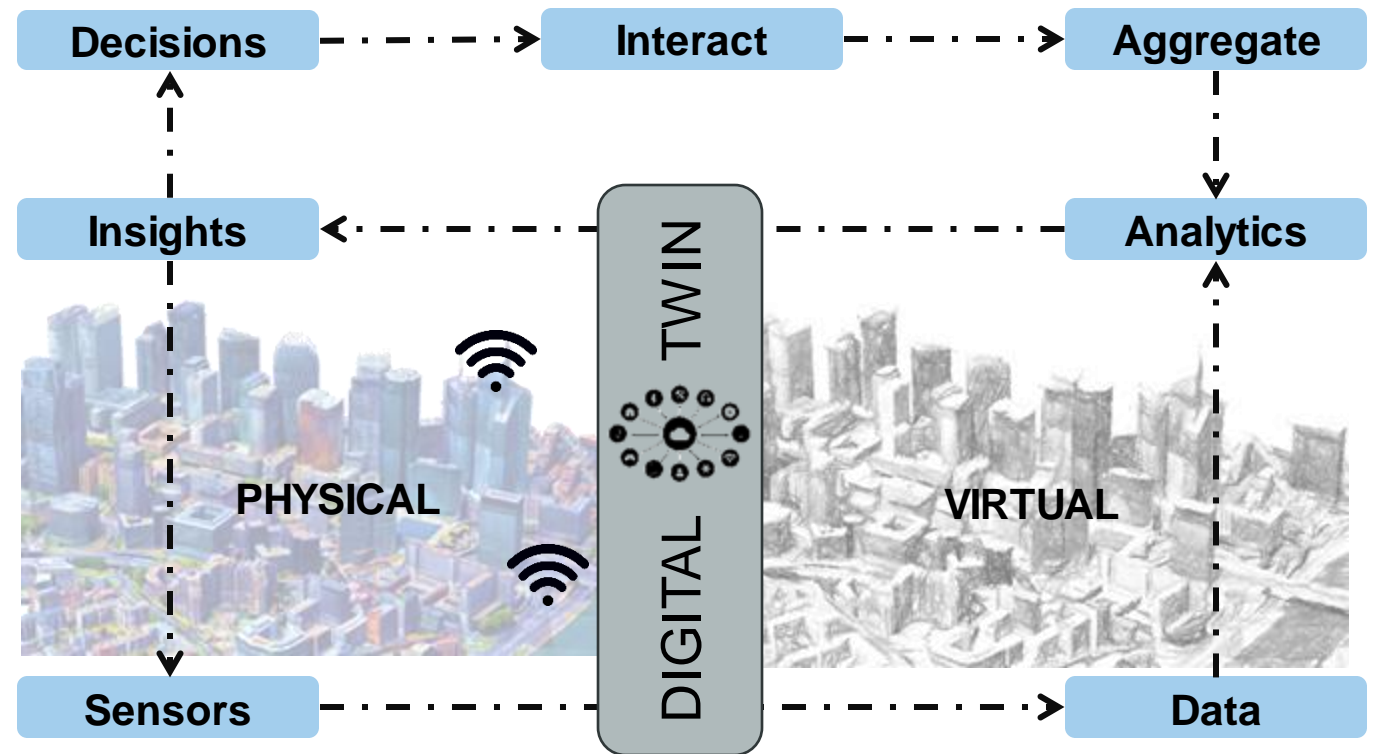
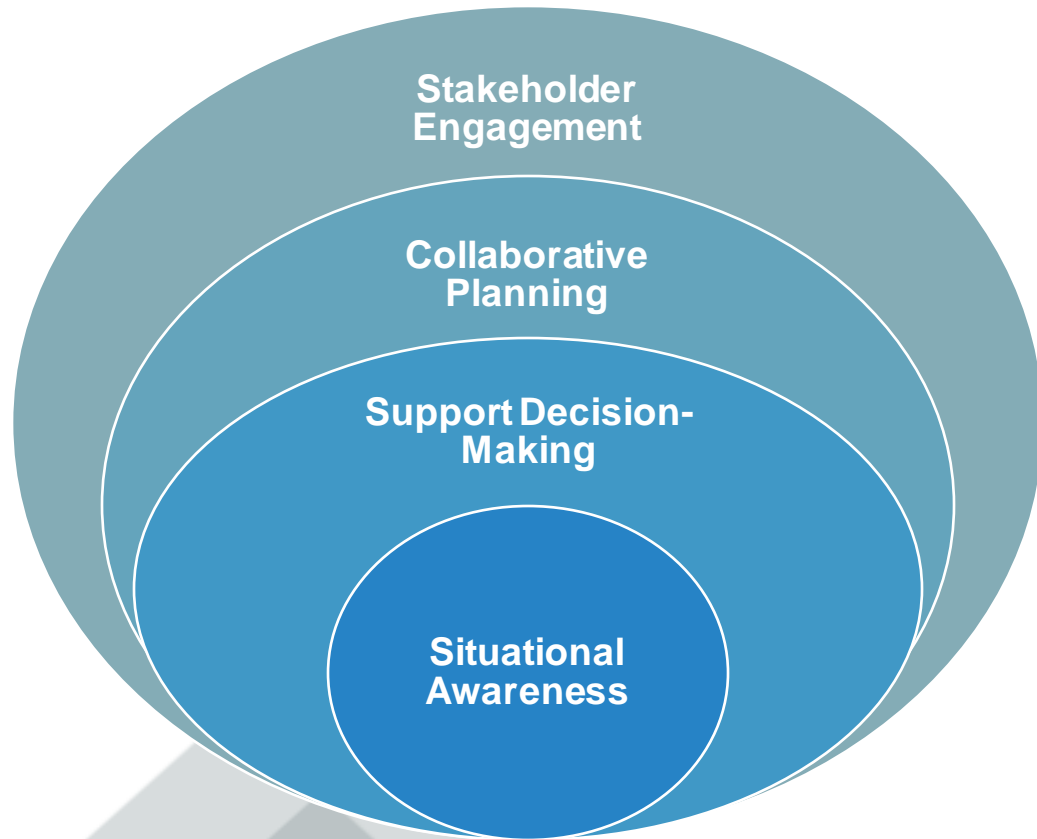
Flood Prediction

Air Quality Sensing

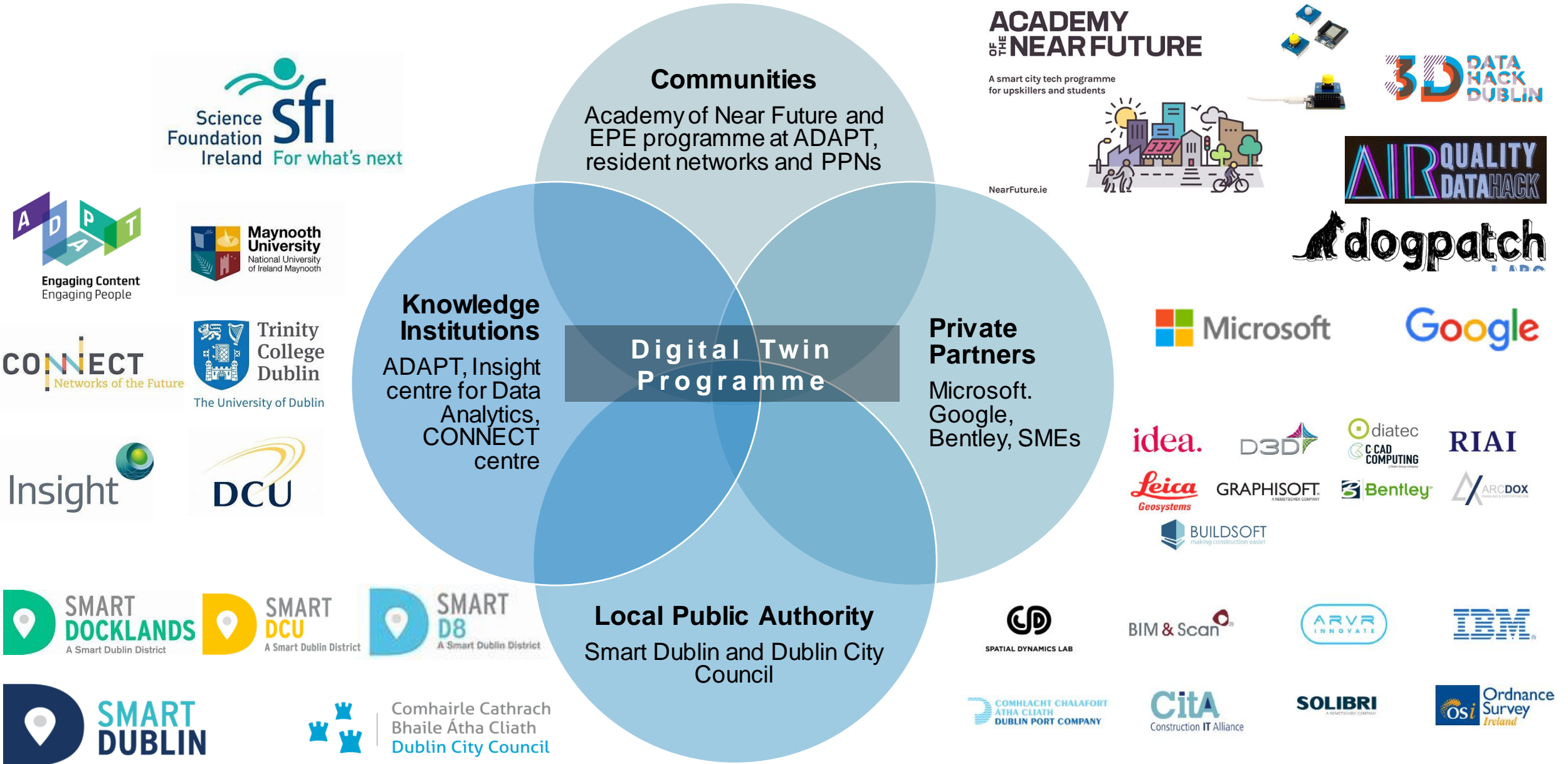
Smart Bike Light

Digital Twin Programme @ DCC

“Unlocking Tomorrow's Possibilities with Digital Twins”



Quadruple Helix of Innovation



Digital Twin projects at DCC



Smart DCU Digital Twin



Dublin Fire Brigade models



Docklands SDZ models



Smart Tourism using AR for engagement

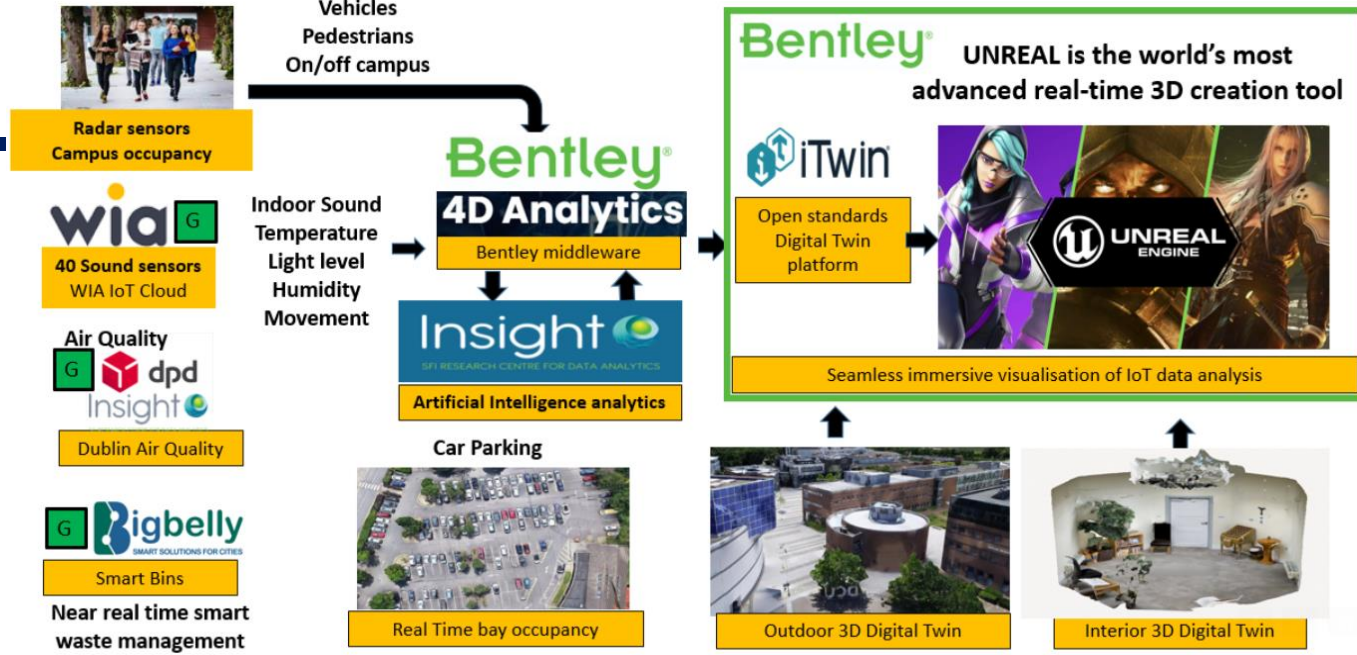


1. Smart DCU Digital Twin



- Smart DCU (Dublin City University) – a university campus as a microcosm of the city, ideal for piloting smart city innovations
- Smart DCU Digital Twin project launched in 2021 as a collaboration between Insight SFI Research Centre for Data Analytics at DCU, DCC, Bentley Systems, KTU
- Phase 1** funding ensured that **all campuses had 3D models** built and some very **light IoT data** overlaid.
- Phase 2** collaboration to ensure **integration of 4D analytics, real-time sensors, internal models and immersive technologies** for engagement to create DCU Immersive Real-Time Digital Twin
- Autism Friendly routing planned

*Project's vision: create a **cognitive Digital Twin** that can make decisions to improve the operational efficiency and the experience of people who live, work or visit the campus.*



2. Dublin Fire Brigade D-TER (Digital Twin for Emergency Response)

Brief:

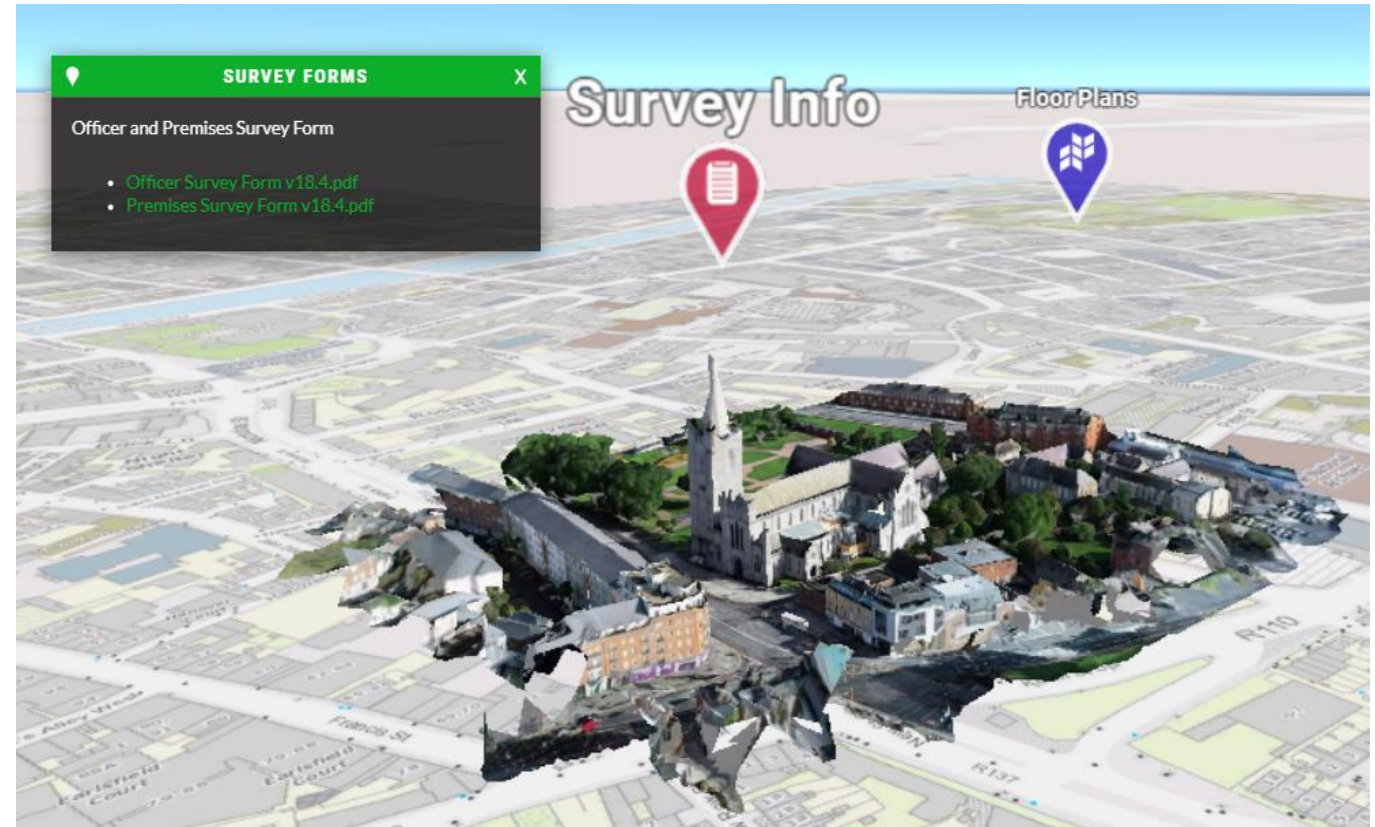
- Dublin Fire Brigade (DFB) has generated **reality mesh models of multiple sites** in the city using drones. Some of these sites include **Trinity College, Christchurch, St. Patrick's Cathedral, Poolbeg, Hugh Lane** etc.
- The models are used for **emergency pre-incident planning and personnel training** by the DFB officials especially for the ones which are considered as **high-risk zones**.



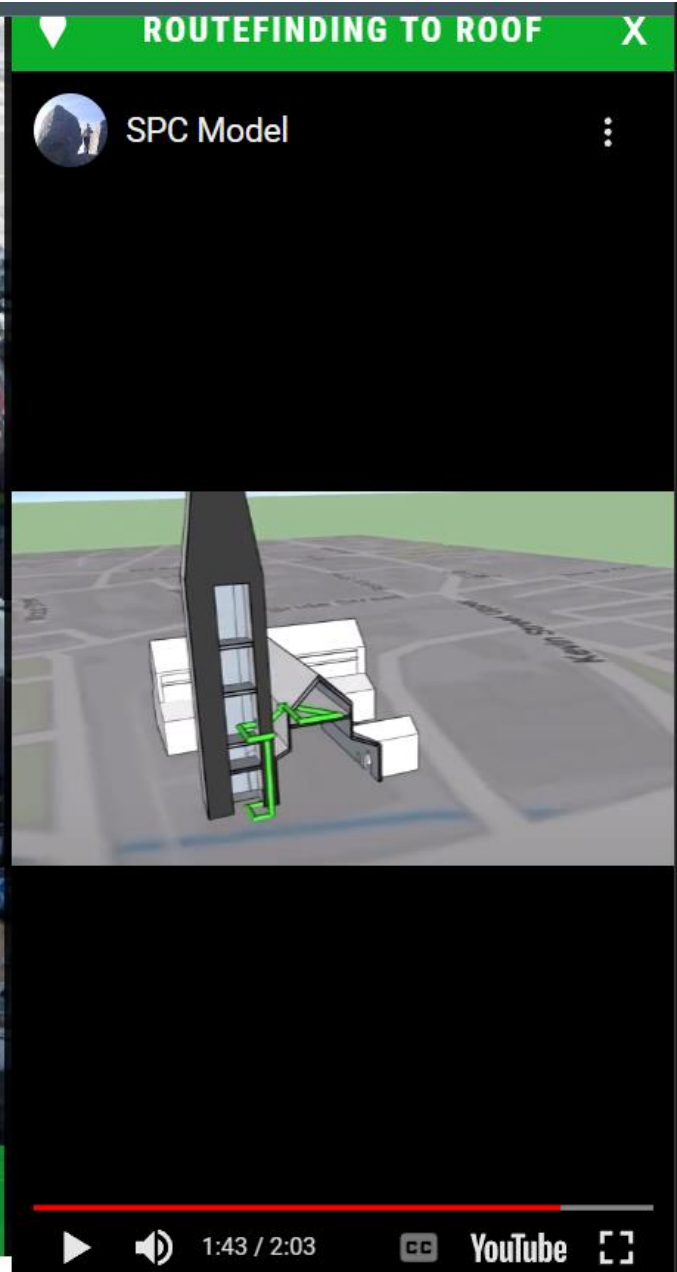
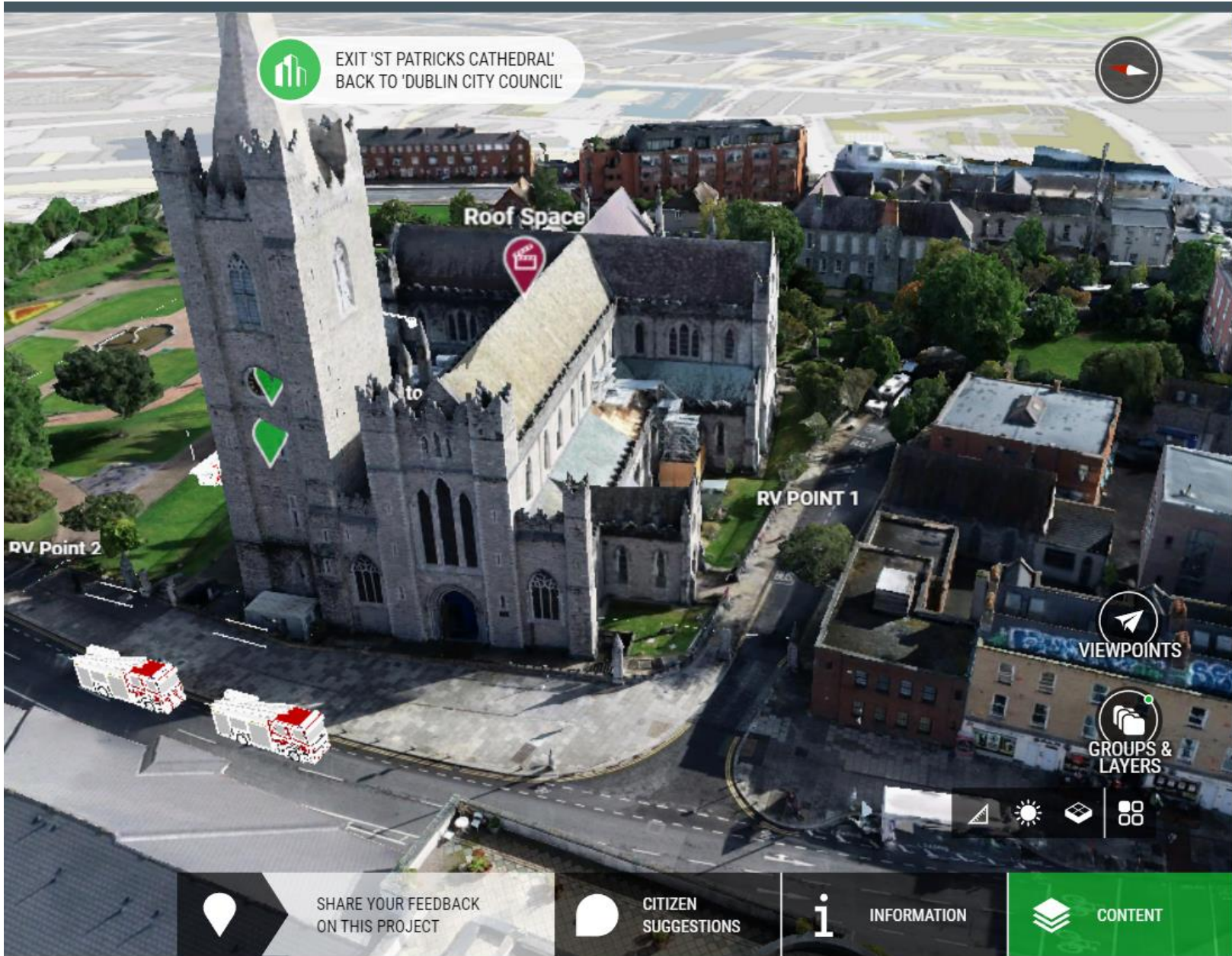
i. BOC Gas project

Implementation:

Drone surveys were used to develop photogrammetric models of selected sites and **Bentley's OpenCities planner** is used to visualize 3D models and few GIS spatial layers.



ii. St.Patrick's Cathedral project



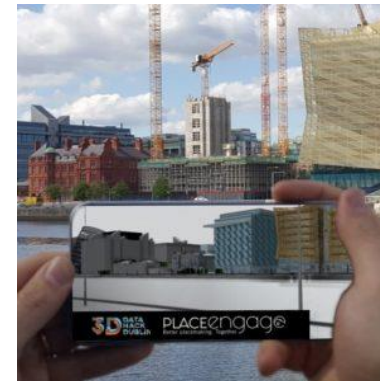
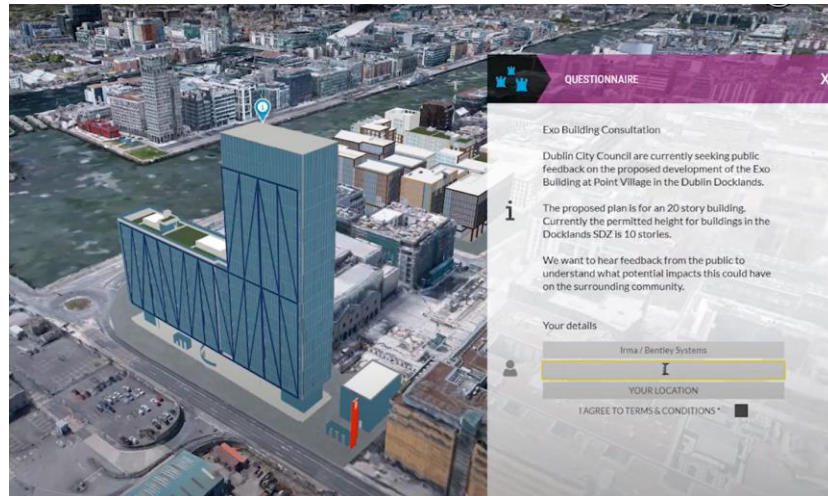
3. Docklands SDZ models

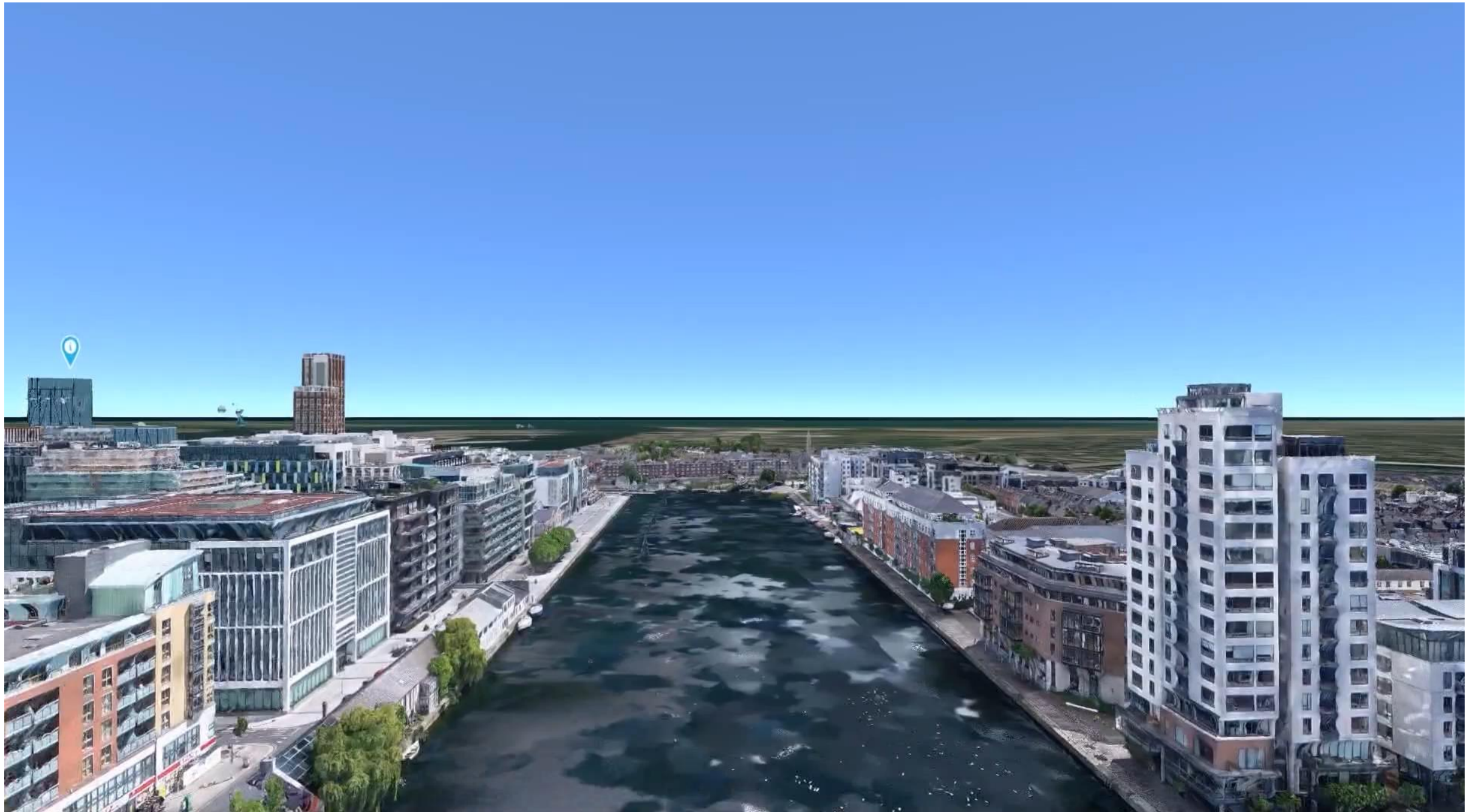
Docklands Strategic Development Zone has **multiple 3D models** created for different purposes -

1. **Block model** - Approx. **5 sq.km block 3D model** with varying level of details in fbx format (LOD2 using facemapping, few buildings with LOD 3 and BIM level details) – subset of this model was released on Dublinked for 2019 3D hackathon event (many researchers have used it for **digital twin work at TCD**)
2. **VR model** operable in **Unreal's Twinmotion** for immersive experience
3. **Reality mesh model** available in OpenCities Planner (drone capturing and mobile mapping utilizing LIDAR technology)



www.3ddatahack.ie



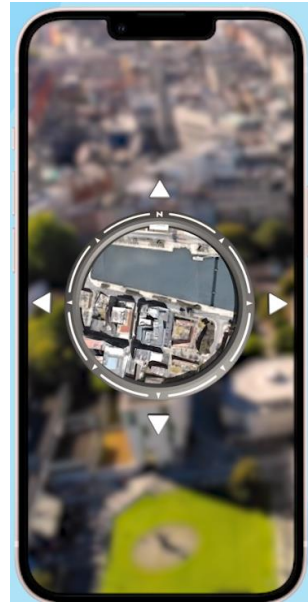


4. Smart Tourism using AR for engagement

- **DCC Smart Tourism Programme, supported by Failte Ireland**, develops solutions based on Augmented and Virtual Reality for **immersive engagement**.
- Dublin Discovery Trails hosts ***'Doors into the Docklands'*** and ***'DiscovAR'*** apps for DCC area

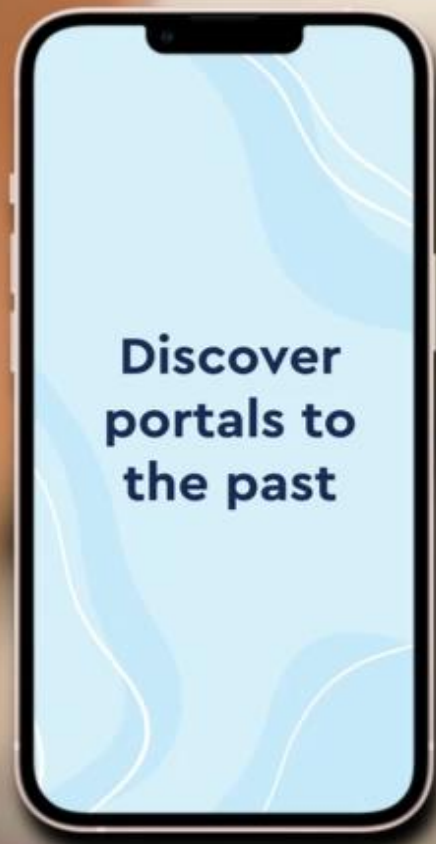


- ***'DiscovAR'*** – utilising 3D Google tiles the app allow users explore Dublin from anywhere in a word, learn about interesting places and take a part in a quest.



- ***'Doors into the Docklands'*** app - visitors to the Docklands are brought on a **tour of the historic areas via GPS-enabled walking trails enhanced with AR/VR experiences** that users can undertake at their own pace.





ACADEMY OF THE NEAR FUTURE

Empowering young people to tackle 21st-century city challenges

Over 1500 students reached nationally!



Comhairle Cathrach
Bhaile Átha Cliath
Dublin City Council



Fondúireacht Eolaíochta Éireann
Dá bhfuil romhainn
Science Foundation Ireland
For what's next

50%
DEIS
50%
female





ACADEMY OF THE NEAR FUTURE

CON:ECT

• SP1 Research Centre for
Future Networks



Dublin City Council
Cathairín Chathach, Bhaile Átha Cliath

Action Projects



Marino College - Fairview Park Report



Planting initiative in St
Wolstans Secondary
School



CBS Westland Row - Letter to Leadership



Active Travel initiatives
in Assumption
Secondary School



DESIGN YOUR — FUTURE CITY —





Interactive workshops
& tech demos





Prototyping ideas &
presenting to city
leaders



Future Directions

Explore innovative solutions for urban planning activities in a controlled environment that mimics the real city

Foster cross-departmental collaboration between various planning agencies

Allow scenario planning before implementation, reducing the risk and increasing the public trust

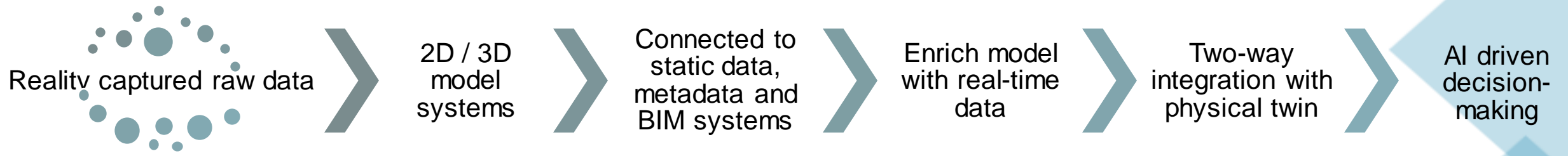
Viable tool for storytelling and communicating plans, policies, and outcomes to citizens



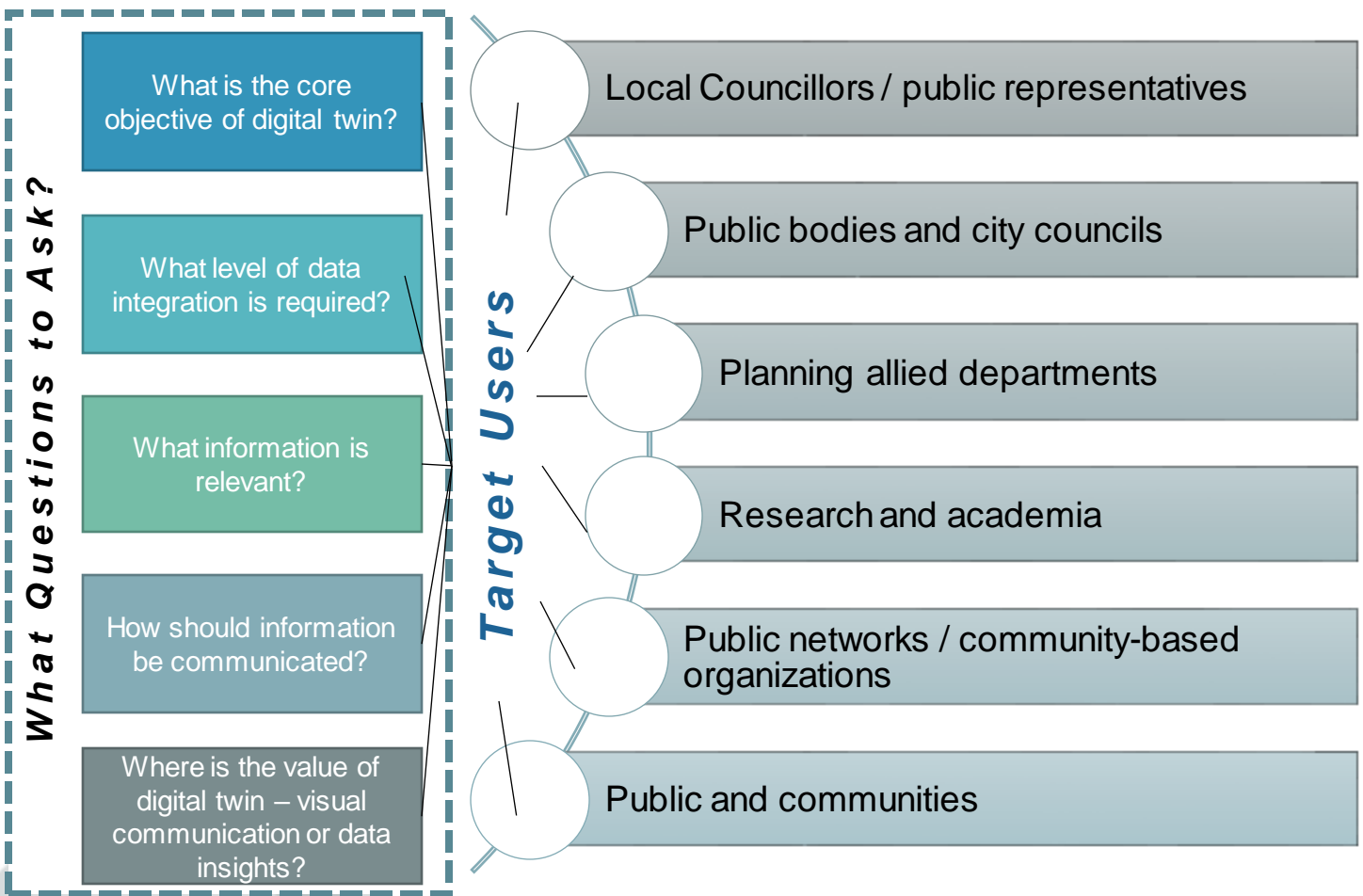
Provide accelerated feedback loops to make designs and construction more precise

Equips consultation team with more tools to answer and demonstrate solutions to public through **interactive and immersive simulations**

Include people with diverse digital literacy levels in decision-making using visual learning, less complicated and more relatable data



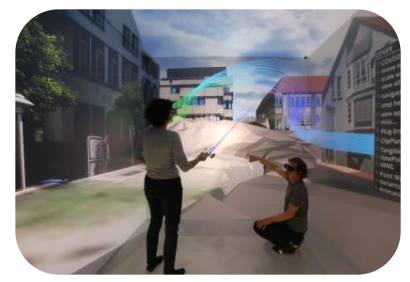
Mapping Target Users and Types of Digital Twins



Geo-referenced and navigable platform (e.g., 3D Web-GIS)



Interactive and hyper-connected GIS-based environment



Immersive technologies (AR/VR) using communicative simulations



Geo-animations and simulation environment

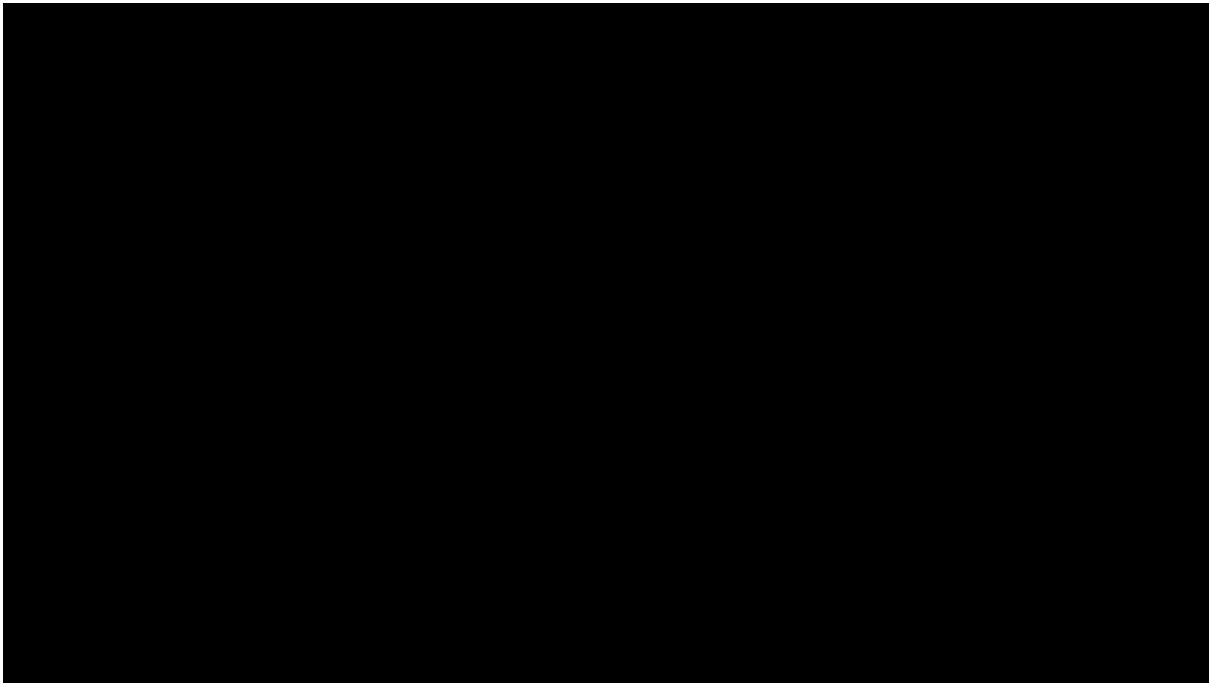
Use Case Type I : Visual and Interactive Twins

Target Audience- Public/Citizens

Purpose - to engage with non-technical target groups

Examples

- ✓ *Smart DCU digital twin for autism-friendly navigation*
- ✓ *Prototypes of Docklands digital twin for community engagement*
- ✓ *Complementing the process of public consultation for DCC projects*



Geo-animation for Santry River Restoration and Greenway



Docklands model for citizen feedback

Use Case Type II : Dynamic and Intelligent Twins

Target Audience –technical or semi-skilled stakeholders

Purpose – informed planning decisions and situational awareness

Potential Partnerships

- ✓ *Digital Twin for Engagement (Dublin City Council’s Smart City approach) with ICHEC under EuroCC2 Digital Innovation Flagship using Open Data and Docklands 3D model*
- ✓ *Multi-thematic planning use case for Smart D8 (a health and wellness district) by identifying planning relationships between different datasets such as air quality, parks and green area density, health and social services, active travel routes, housing, noise, community initiatives and other infrastructures*
- ✓ *Digital twin for emergency response by Dublin Fire Brigade for personnel training*
- ✓ *Exploring Citizen Science and Feedback for Digital Twins*



Broader Impact



“ **JUST** and **GREEN** transition **LEAVING-NO-ONE-BEHIND** in **Digital Age** ”

1 Proof of Concept

Trial and Test LDT use-cases
-Ethical and Governance Framework for design and deployment phases + Evaluate

2 Capacity Building

Build a Collaborative Ecosystem
*-DT Interest Group @ DCC
-Local Stakeholder Groups*

3 New Opportunities

Future partnerships
*- EU funding calls and work with private enterprises
-EuroCC's DIF call*

Community of Practice



LIVING-IN.EU



CITY INNOVATORS
by The Innovators Forum

EURO CITIES

OPEN & AGILE SMART CITIES



CitiesToday
Institute

Bloomberg
Philanthropies

Thank you!

Visit Homepage - Smart Dublin to know more.