







# Long-term variability and trends in meteorological droughts in Western Europe (1851–2018)

Sergio M. Vicente-Serrano<sup>1</sup>  | Fernando Domínguez-Castro<sup>2</sup> |  
 Conor Murphy<sup>3</sup>  | Jamie Hannaford<sup>3,4</sup> | Fergus Reig<sup>1</sup> | Dhais Peña-Angulo<sup>1</sup> |  
 Yves Trambly<sup>5</sup>  | Ricardo M. Trigo<sup>6</sup> | Neil Mac Donald<sup>7</sup>  |  
 M. Yolanda Luna<sup>8</sup> | Mark Mc Carthy<sup>9</sup> | Gerard Van der Schrier<sup>10</sup> |  
 Marco Turco<sup>11</sup> | Dario Camuffo<sup>12</sup> | Ivan Noguera<sup>1</sup> |  
 Ricardo García-Herrera<sup>13,14</sup> | Francesca Becherini<sup>12,15</sup> | Antonio Della Valle<sup>12</sup> |  
 Miquel Tomas-Burguera<sup>16</sup>  | Ahmed El Kenawy<sup>17,18</sup> 

<sup>1</sup>Instituto Pirenaico de Ecología, Consejo Superior de Investigaciones Científicas (IPE-CSIC), Zaragoza, Spain

<sup>2</sup>Aragonese Agency for Research and Development Researcher, Department of Geography, University of Zaragoza, Zaragoza, Spain

<sup>3</sup>Irish Climate Analysis and Research UnitS (ICARUS), Department of Geography, Maynooth University, Maynooth, Ireland

<sup>4</sup>Centre for Ecology and Hydrology, Wallingford, UK

<sup>5</sup>HSM, University of Montpellier, CNRS, IRD, Montpellier, France

<sup>6</sup>Instituto Dom Luiz (IDL), Faculdade de Ciências, Universidade de Lisboa, Lisbon, Portugal

<sup>7</sup>School of Environmental Sciences, University of Liverpool, Liverpool, UK

<sup>8</sup>Agencia Estatal de Meteorología (AEMET), Madrid, Spain

<sup>9</sup>Met Office National Climate Information Centre, Exeter, UK

<sup>10</sup>Royal Netherlands Meteorological Institute (KNMI), De Bilt, Netherlands

<sup>11</sup>Regional Atmospheric Modeling Group, Department of Physics, University of Murcia, Murcia, Spain

<sup>12</sup>Institute of Atmospheric Sciences and Climate (CNR-ISAC), Padova, Italy

<sup>13</sup>Departamento de Ciencias de la Tierra y Astrofísica, Facultad de Ciencias Físicas, Universidad Complutense de Madrid, Madrid, Spain

<sup>14</sup>Instituto de Geociencias (CIS-UCM), Madrid, Spain

<sup>15</sup>Institute of Polar Sciences (CNR-ISP), Venice, Italy

<sup>16</sup>Estación Experimental de Aula Dei, Consejo Superior de Investigaciones Científicas (EEAD-CSIC), Zaragoza, Spain

<sup>17</sup>Department of Geography, Mansoura University, Mansoura, Egypt

<sup>18</sup>Department of Geography, Sultan Qaboos University, Muscat, Oman

## Correspondence

M. Sergio Vicente-Serrano, Instituto Pirenaico de Ecología, Consejo Superior de Investigaciones Científicas (IPE-CSIC), Zaragoza, Spain.  
 Email: svicen@ipe.csic.es

## Present address

Ricardo M. Trigo, Departamento de Meteorologia, Instituto de Geociências, Universidade Federal do Rio de Janeiro, Rio de Janeiro, 21941-916, Brazil

## Abstract

We analysed long-term variability and trends in meteorological droughts across Western Europe using the Standardized Precipitation Index (SPI). Precipitation data from 199 stations spanning the period 1851–2018 were employed, following homogenisation, to derive SPI-3 and SPI-12 series for each station, together with indices on drought duration and severity. Results reveal a general absence of statistically significant long-term trends in the study domain, with the exception of significant trends at some stations, generally covering short periods. The largest decreasing trends in SPI-3 (i.e., increasing drought conditions) were

**Funding information**

AXIS (Assessment of Cross(X) - sectorial climate Impacts and pathways for Sustainable transformation) JPI-Climate, Grant/Award Number: CROSSDRO; ERA4CS, an ERA-NET initiated by JPI Climate, Grant/Award Number: 690462; Irish Research Council for Science, Engineering and Technology, Grant/Award Number: COALESCE/2019/43; Spanish Commission of Science and Technology and FEDER, Grant/Award Numbers: CGL2017-82216-R, PCIN-2015-220; Spanish Ministry of Economy and Competitiveness, Grant/Award Number: FJCI-2017-33652; Spanish Ministry of Science, Innovation and Universities, Grant/Award Number: RTI2018-099711-J-I00; WaterWorks 2014 co-funded call of the European Commission, Grant/Award Number: IMDROFLOOD

found for summer in the British and Irish Isles. In general, drought episodes experienced in the last two or three decades have precedents during the last 170-years, emphasizing the importance of long records for assessing change. The main characteristic of drought variability in Western Europe is its strong spatial diversity, with regions exhibiting a homogeneous temporal evolution. Notably, the temporal variability of drought in Western Europe is more dominant than long-term trends. This suggests that long-term drought trends cannot be confirmed in Western Europe using precipitation records alone. This study provides a long-term regional assessment of drought variability in Western Europe, which can contribute to better understanding of regional climate change during the past two centuries.

**KEYWORDS**

drought, instrumental period, Mediterranean, precipitation, Standardized Precipitation Index, trends, Western Europe

**1 | INTRODUCTION**

Many studies have analysed droughts across Europe (e.g., van der Schrier *et al.*, 2006; Bordi *et al.*, 2009; Todd *et al.*, 2013; Potop *et al.*, 2014; Brázdil *et al.*, 2015). Drying trends have been suggested over the Mediterranean region (e.g., Sousa *et al.*, 2011; Hoerling *et al.*, 2012; Vicente-Serrano *et al.*, 2014c; Stagge *et al.*, 2017), particularly due to anthropogenic influences (Hoerling *et al.*, 2012; Gudmundsson and Seneviratne, 2016; Gudmundsson *et al.*, 2017). These trends have been supported by several studies based on paleo-climatic reconstructions and modelling approaches (e.g., Nicault *et al.*, 2008; Briffa *et al.*, 2009; Hanel *et al.*, 2018; Marvel *et al.*, 2019). However, other investigations that have employed precipitation-based drought indices have not found significant trends across Europe (e.g., Lloyd-Hughes and Saunders, 2002; Spinoni *et al.*, 2017, 2019), including the Mediterranean (e.g., Martins *et al.*, 2012; Di Lena *et al.*, 2014; Merino *et al.*, 2015; Domínguez-Castro *et al.*, 2019). The findings of these studies stress the difficulty in finding consensus on drought trends given the complexity of defining (Lloyd-Hughes, 2014) and quantifying (Vicente-Serrano, 2016; Wilhite and Pulwarty, 2017) drought. Furthermore, uncertainty in drought trends in Europe is linked to the use of different periods of analysis (Hannaford *et al.*, 2013) and deployment of a wide spectrum of possible drought metrics. The latter employ several hydroclimatic variables including, precipitation (Lloyd-Hughes and Saunders, 2002; Vicente-Serrano, 2006a), atmospheric evaporative demand (Vicente-Serrano *et al.*, 2014b; Spinoni *et al.*, 2015; Stagge *et al.*, 2017), streamflow (Hisdal *et al.*, 2001; Parry *et*

*al.*, 2012; Hannaford *et al.*, 2013; Lorenzo-Lacruz *et al.*, 2013), groundwater (Lorenzo-Lacruz *et al.*, 2017; Marchant and Bloomfield, 2018) and soil moisture simulations (Hanel *et al.*, 2018; Moravec *et al.*, 2019).

In this context, the observed increase in atmospheric evaporative demand (AED), as revealed by Robinson *et al.* (2017), Stagge *et al.* (2017) and Vicente-Serrano *et al.* (2014a) could be seen as a key driver of drought severity in Europe over recent decades, particularly in the Mediterranean region (Vicente-Serrano *et al.*, 2014b; Stagge *et al.*, 2017; García-Herrera *et al.*, 2019). This may explain the decrease of soil moisture in land-atmosphere model outputs (e.g., Hanel *et al.*, 2018). Despite the significant role of AED, precipitation remains the dominant climatic variable contributing to recent drought severity and variability (Lloyd-Hughes and Saunders, 2002; Briffa *et al.*, 2009). This dependency is valid from a hydroclimatic perspective, given the stronger response of streamflow to precipitation, compared to AED (Yang *et al.*, 2018), which has been empirically verified for Western Europe (see Vicente-Serrano *et al.*, 2019).

Future climate projections, based on different drought metrics, suggest that vast areas of Europe are likely to be impacted by severe drought events by the end of the 21st century in response to anthropogenic forcing (e.g., Beniston *et al.*, 2007; Sheffield and Wood, 2008; Forzieri *et al.*, 2014; Samaniego *et al.*, 2018; Spinoni *et al.*, 2018). These events could be seen as an extension of observed drought episodes in Europe over the past two decades, including, for example: the 2011/2012 (Trigo *et al.*, 2013) and 2004/2005 (García-Herrera *et al.*, 2007; Santos *et al.*, 2007) droughts in Iberia, the 2003/2004 (Mihajlović, 2006) and 2012 (Cindrić *et al.*, 2016) in Croatia, the 2011/2012 (Zahradníček

*et al.*, 2015) drought in the Czech Republic, the 2015 drought (Hoy *et al.*, 2017; Ionita *et al.*, 2017; Laaha *et al.*, 2017) in central Europe, and the 2017 drought (García-Herrera *et al.*, 2019) in Western Europe. However, a considerable number of intense drought events took place in Europe in the first half of the 20th century, but have not received a similar level of attention as those mentioned above (e.g., the 1944–1945 Iberian drought or the widespread 1921–1922 European drought). In fact, a long-term assessment of drought variability and changes in Western Europe remains lacking. Such an assessment is necessary to test whether present drought characteristics are unusual in the context of available instrumental observations.

Therefore, the main objectives of this study are: (a) to analyse long-term (1851–2018) variability and trends in meteorological droughts over Western Europe, (b) to define the spatial patterns of these trends, and (c) to determine changes in the duration, magnitude and spatial extent of droughts. To realize these objectives we assess drought characteristics using the Standardized Precipitation Index (SPI) applied to a newly developed precipitation dataset (199 long-term stations) covering Western Europe.

## 2 | DATA

Precipitation data were collected from different sources, including national meteorological agencies in different countries (e.g., Spain, Portugal, Germany, Netherlands, France, and the United Kingdom), the Global Historical Climatology Network (GHCN) dataset (<https://www.ncdc.noaa.gov/data-access/land-based-station-data/land-based-datasets/global-historical-climatology-network-ghcn>), the European Climate Assessment & Dataset (ECA&D) project (<https://www.ecad.eu/dailydata/index.php>), in addition to a set of long-term precipitation series presented in earlier works by Murphy *et al.* (2019), Noone *et al.*, 2017 and Todd *et al.* (2015). Overall, we collected monthly precipitation data from 1871 locations across Western Europe covering the period from 1851 to 2018. Amongst them, data from only 206 observatories were retained, as they have short gaps (less than 5% of the total record missing).

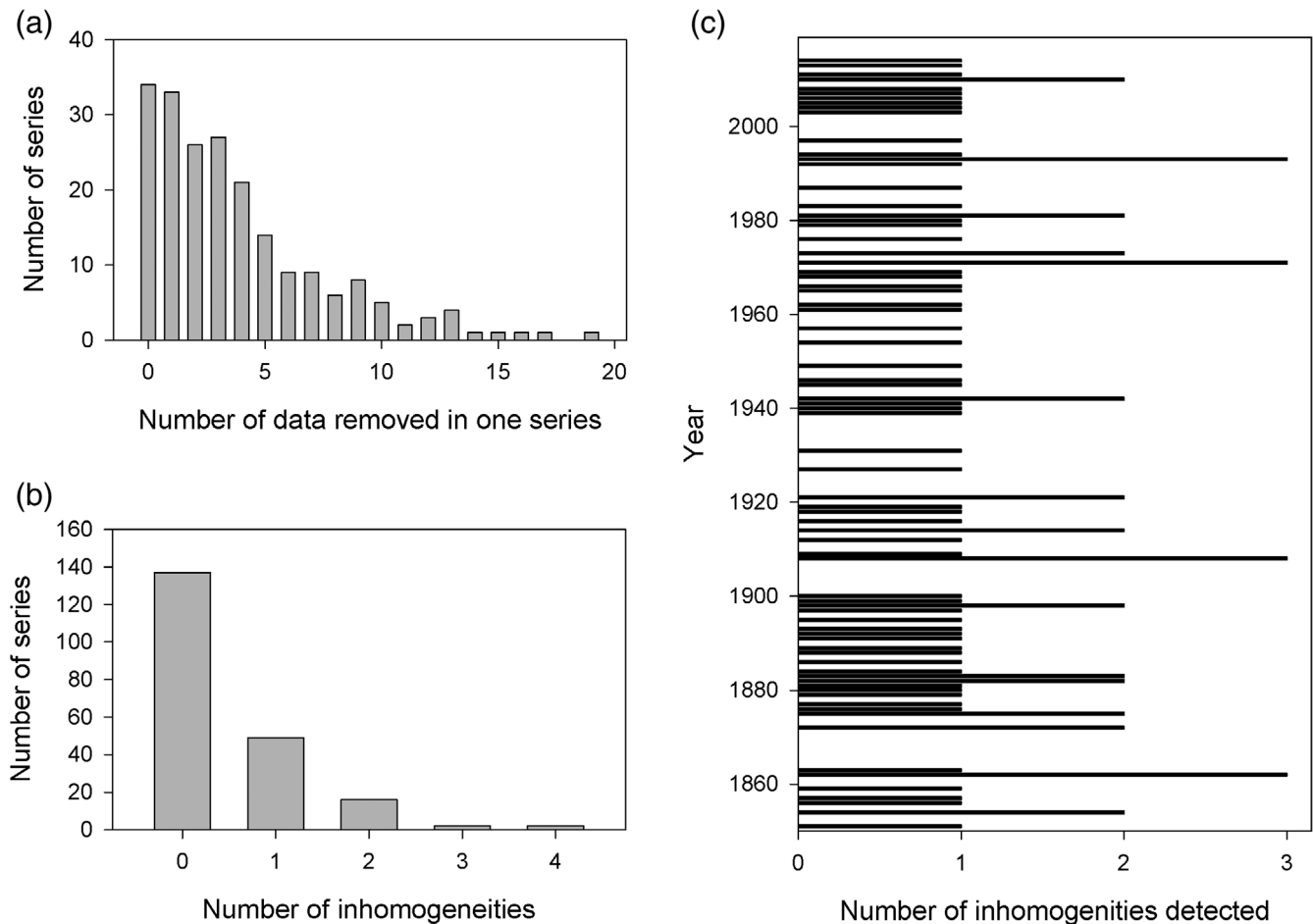
The selected time series were subjected to rigorous quality control and homogeneity testing. The quality control was mainly based on a comparison of the anomaly of precipitation at each candidate station with the closest five neighbouring stations. Herein, the anomalies were computed with respect to the base period 1871–2018 and compared for each month independently. This statistical testing was also supported by a careful visual assessment to compare data from each station with the closest reference stations. The aim was to trim suspicious values,

while keeping ‘real’ extreme values. This procedure is important, given that some parts of the Mediterranean can experience exceptional local wet events during summertime. Following this procedure, data for 798 months (0.2% of the total dataset) were removed and assigned as ‘missing values’. At the station level, the number of trimmed values was generally less than 5 data points over the whole study period (1851–2018) (Figure 1a).

To perform homogeneity testing, HOMER (Homogenisation software in R) was employed. HOMER is a semi-automated tool in the R platform, which combines a fully automated joint segmentation with a partly subjective pairwise comparison. This tool allows for identification of breaks in monthly precipitation series by means of a wide range of relative homogeneity tests. These tests are highly recommended for testing homogeneity of climate data (Venema *et al.*, 2012). According to the relative homogeneity tests, data from each candidate series were compared with data from a number of reference series (the best five correlated series) at both seasonal and annual scales (Mestre *et al.*, 2013; Noone *et al.*, 2016). When a statistically significant break is detected in a series, a correction factor was applied following Mestre *et al.* (2013). Figure 1b illustrates the frequency of inhomogeneities found in the dataset. As depicted, most of the series ( $N = 138$ ) were free from the presence of inhomogeneities, while the frequency of stations with two or more breaks was low. The dataset did not show a particular concentration of inhomogeneities over specific periods, which gives confidence in the overall high quality of the data (Figure 1c). Following homogeneity testing, only three stations were discarded due to the presence of a high number of inhomogeneities in the data and their weak correlation with neighbouring reference series. Figure 2 illustrates the spatial distribution of the final dataset following the results of the quality control and homogeneity testing. According to the data availability, the final dataset includes 115, 171, and 199 stations whose records date back to 1851, 1861, and 1871, respectively. It should be noted that the few missing values present in the series, due to quality control checks, were filled by HOMER after the homogeneity testing following the procedure detailed by Mestre *et al.* (2013).

## 3 | METHODS

The SPI is a standardized drought index that allows direct comparison over space and time, irrespective of precipitation magnitude and climatic conditions. Originally proposed by McKee *et al.* (1993), SPI is one of the most widely-used drought metrics and is also recommended for drought monitoring by the WMO (Hayes *et al.*, 2011;



**FIGURE 1** (a) Frequency of the number of cases (months) removed from each series after quality control checks, (b) the number of inhomogeneities detected in the series, and (c) distribution of detected inhomogeneities as a function of time

WMO, 2012). To quantify drought, we computed SPI at two timescales (3- and 12-month) using precipitation data from 199 stations. 3-month allows identifying seasonal dryness and 12-month to determine the annual conditions. To ensure comparability of SPI series derived for different lengths (1851–2018, 1861–2018, and 1871–2018) the reference period used to calculate the distribution parameters in fitting SPI was 1871–2018 for all stations. SPI was derived using the SPEI package within the R platform (Beguería *et al.*, 2014) using the Gamma distribution following the guidelines of the World Meteorological Organization (WMO).

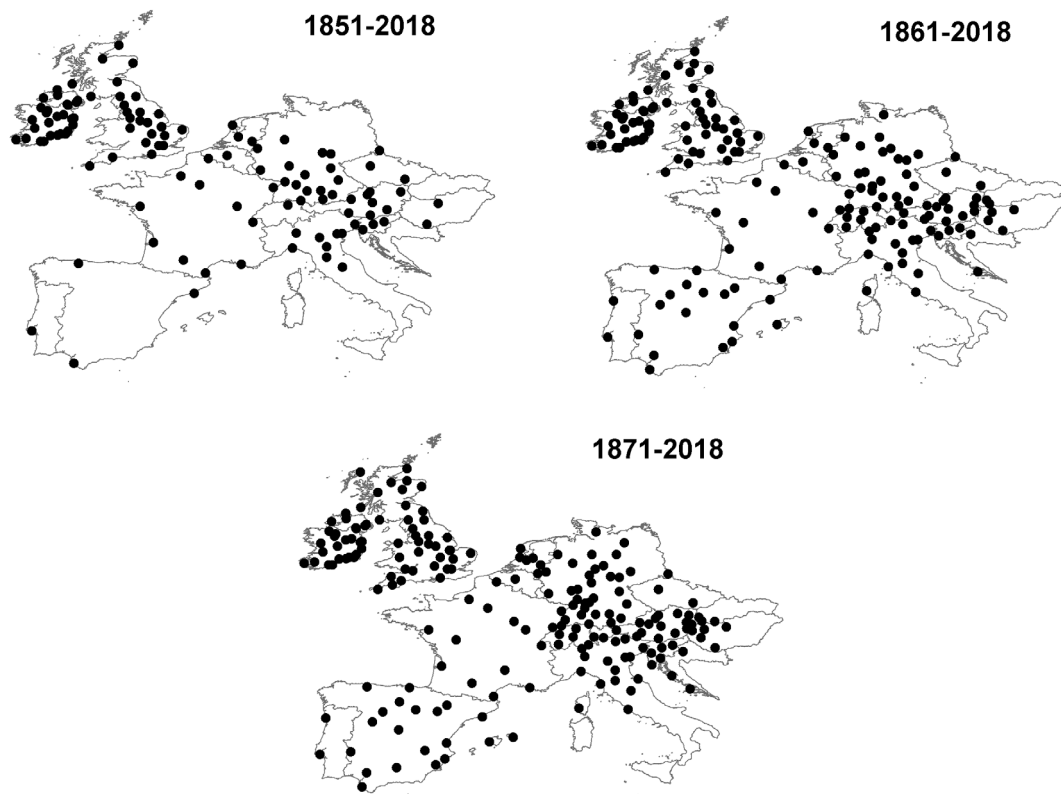
Drought characteristics were defined for each precipitation series in the study domain using the calculated SPI series. A drought event was simply defined using an SPI threshold comparable over space and time (Tallaksen *et al.*, 1997, 2009). A value equal to  $-0.84$  represents the 20th percentile of the SPI cumulative probability distribution and return period of one in 5-years, thus ensuring a sufficient sample size for reliable trend detection. Drought duration was defined as the number of

consecutive and uninterrupted months with SPI below  $-0.84$ , while the accumulated precipitation deficit was defined as the sum of SPI values over consecutive months with SPI values lower than  $-0.84$ .

In addition, the spatial extent of drought was defined to represent the total area impacted by drought. Given the uneven distribution of meteorological stations, a Thiessen polygon method was applied to approximate the representative area of each station. This method gives weights to individual stations according to the area represented by each (Jones and Hulme, 1996). The total surface area impacted by drought was calculated for Western Europe as a whole and for regions, including; central, south and north West Europe (Supplementary Figure S1). The total area impacted by drought was calculated for three different drought categories: mild drought: SPI =  $-0.84$ : return period of one in 5-years; moderate drought: SPI =  $-1.28$ : return period of one in 10-years; and severe drought: SPI =  $-1.65$ : return period of 1 in 20-years).

Trends in the SPI series, drought duration, magnitude and total surface area were assessed using least squares





**FIGURE 2** Spatial distribution of the available precipitation stations employed for different analysis periods

regression. For the SPI and drought area series, trends were calculated using SPI-3 at 3-month intervals in February, May, August, and November, which represent SPI-3 drought conditions during winter, spring, summer, and autumn, respectively. SPI-12 in December was used to characterize drought at the annual scale. Trend significance was assessed using a modified version of the non-parametric Mann–Kendall statistic which limits the possible impact of serial autocorrelation on trend significance (Hamed and Ramachandra Rao, 1998). Significance was assessed at the 95% level ( $p < 0.05$ ).

Principal component analysis (PCA) was used to determine homogeneous regions in terms of drought variability. We applied an S-mode PCA using the SPI-12 series for each of the 199 stations. In the S-mode, stations are the variables and the time observations refer to the cases (Serrano *et al.*, 1999). As PCA is sensitive to missing values, we restricted our analysis to 1871–2018 when all 199 stations have complete records. The areas represented by each mode were identified by mapping the factorial loadings (i.e., the highest correlation found between each original variable and the extracted principal components). The loadings were interpolated by means of a method of splines with tension (Mitášová and Mitáš, 1993). The number of components was selected according to the criterion of eigenvalue  $>1$ , before

applying the Varimax rotation method to the original data. (White *et al.*, 1991). Once the components were rotated, we retained those that grouped more than 75% of the total variance.

To extend the temporal analysis in each region, we identified the most representative station of each component (based on factorial loadings). The aim was to analyse the interannual variability of drought characteristics corresponding to each retained component from 1851 or 1861 onwards, according to data availability. Heat maps were plotted for each representative series based on the magnitude of change in drought series, based on linear regression. Trends were computed for running periods with a minimum of 30 and a maximum of 168-years, using annual (12-month) and seasonal (3-month) SPI values, as well as drought duration and magnitude series. Trend magnitude and significance in the heat maps correspond to the beginning of the period of analysis.

## 4 | RESULTS

### 4.1 | Trend detection

Figure 3 illustrates the magnitude of change in long-term SPI series calculated at the annual scale (December SPI-

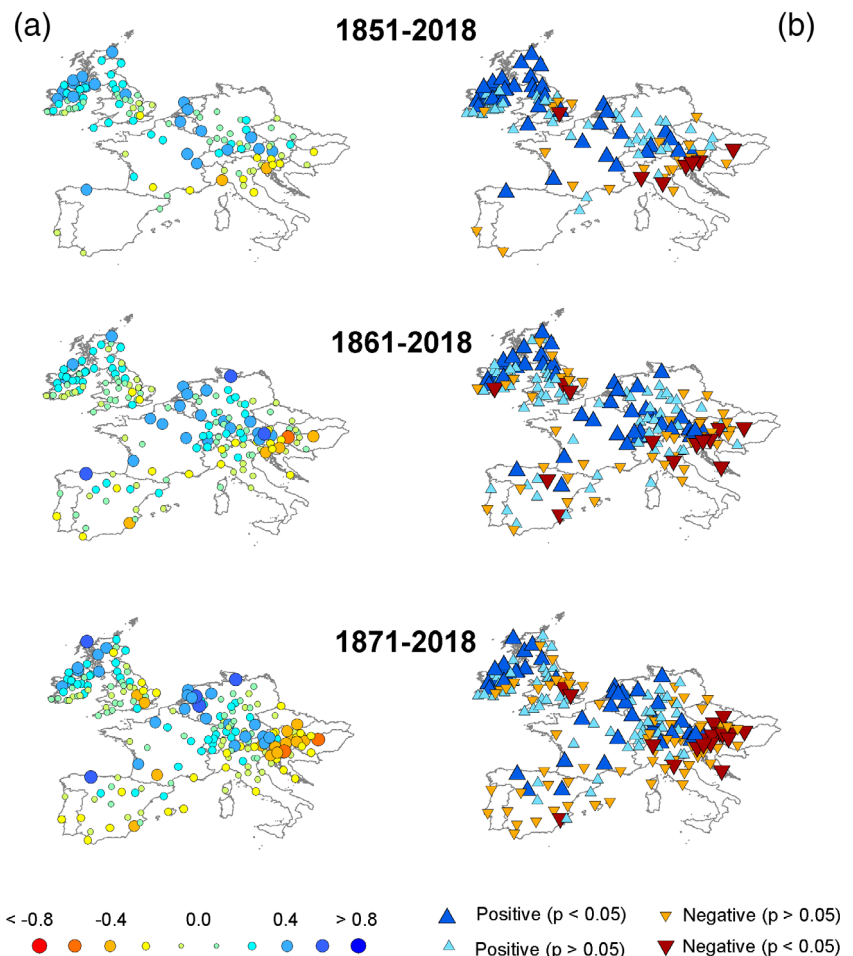
12) and the corresponding statistical significance for our three time periods. Statistically significant positive trends (wetter conditions) are evident over the British and Irish Isles and central Europe from 1851. On the contrary, albeit with fewer stations, negative trends (drier conditions) predominate over Italy and the Balkans. The negative trends in the Balkans are more pronounced from 1871 onwards, while the positive trends recorded from 1851 in northwest Europe are less consistent. In other regions like the Iberian Peninsula and southern France, no consistent patterns of change are evident, although negative trends prevail in western and southern Iberia since 1871 (Figure 3), albeit mostly non-significant at the 95% level ( $p < 0.05$ ). The percentage of stations with positive trends exceeds those with negative trends, irrespective of the season or the study period (Table 1).

Trends show important seasonal differences, analysed using SPI-3 (Supplementary Figures S2–S5). Specifically, trends are mostly positive in winter, with largest change in central areas of west Europe. Exceptionally few stations exhibit statistically significant negative trends for winter. In spring, the spatial distribution of trends is more heterogeneous, with positive trends dominating in

the British and Irish Isles, northern France and Germany and negative trends in the southwest of the Iberian Peninsula, Italy and the Balkans. However, in most cases (76.9% for the period 1871–2018), these trends were statistically non-significant at the 95% level ( $p < 0.05$ ).

Summer shows the largest percentage of negative trends, though statistically non-significant at the majority of stations. Significant negative trends are found mainly over the British and Irish Isles, particularly Ireland for the period 1871–2018. Trends are generally non-significant in autumn, however, we note a consistent positive trend in Ireland, and conversely a negative trend over northern parts of the Balkans.

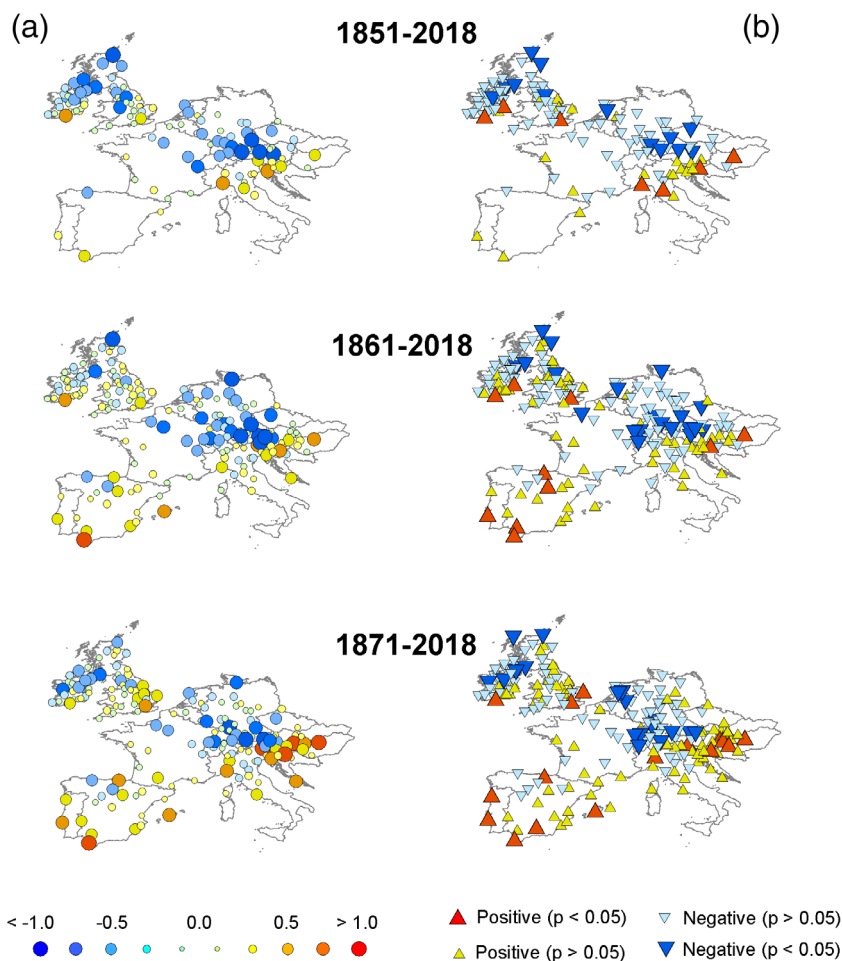
Similar to SPI values, changes in drought duration and magnitude do not show consistent long-term trends across Western Europe (Figures 4–7 and Table 2). In a few instances, statistically significant positive or negative trends are observed at the seasonal scale (i.e., SPI-3, Figures 4–6). In contrast, no significant changes are noted for long-term droughts (i.e., SPI-12, Figures 5–7). For SPI-3, no coherent spatial patterns of drought trends are observed, with no clear differences even between northern and southern regions. As an indication of this high



**FIGURE 3** Spatial distribution of (a) the magnitude of change in annual SPI series (December SPI-12) and (b) their statistical significance. The magnitude of change is expressed in  $z$  units/decade

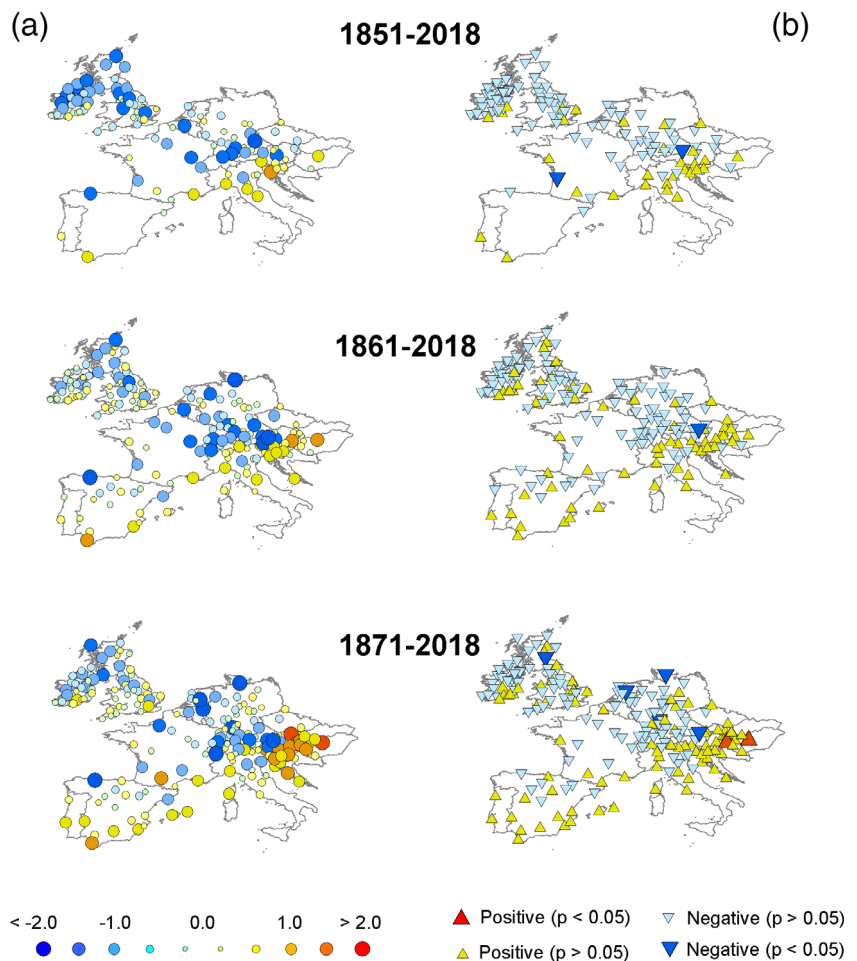
**TABLE 1** . Percentage of series showing positive and negative SPI trends at seasonal (SPI-3) and annual (SPI-12) scales during the periods 1851–2018, 1861–2018, and 1871–2018

	Negative ( $p < 0.05$ )	Negative ( $p > 0.05$ )	Positive ( $p > 0.05$ )	Positive ( $p < 0.05$ )
Winter (1851)	0.0	8.7	47.0	44.3
Winter (1861)	1.2	15.2	53.8	29.8
Winter (1871)	1.0	15.6	51.3	32.2
Spring (1851)	4.4	25.4	56.1	14.0
Spring (1861)	5.8	31.0	45.6	17.5
Spring (1871)	9.5	30.2	46.7	13.6
Summer (1851)	12.2	67.0	20.9	0.0
Summer (1861)	8.8	61.4	29.2	0.6
Summer (1871)	16.6	61.8	21.6	0.0
Autumn (1851)	3.5	38.3	47.8	10.4
Autumn (1861)	2.3	48.5	46.8	2.3
Autumn (1871)	4.5	54.3	37.7	3.5
Annual (1851)	6.1	19.1	40.0	34.8
Annual (1861)	7.6	26.9	41.5	24.0
Annual (1871)	9.0	35.2	34.7	21.1



**FIGURE 4** Spatial distribution of changes in the duration of drought events based on SPI-3 series (a) and (b) their statistical significance. Changes are expressed in months/decade

**FIGURE 5** Spatial distribution of changes in the duration of drought events based on SPI-12 series (a) and (b) their statistical significance. Changes are expressed in months/decade



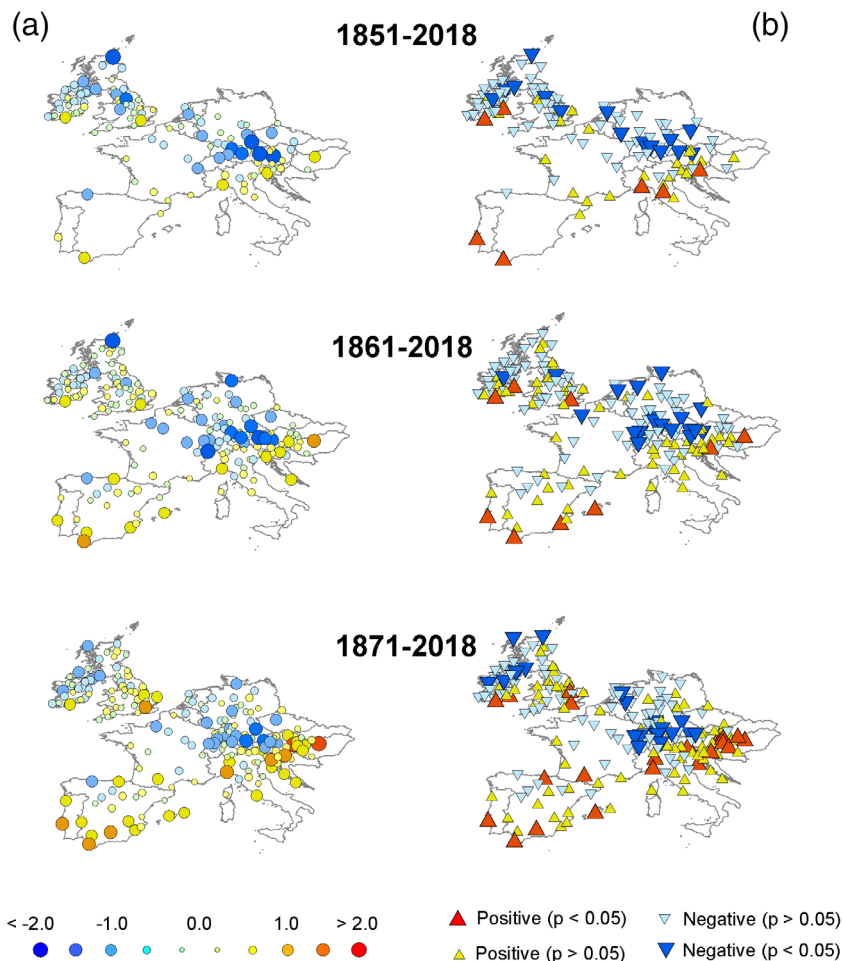
spatial variability in drought trends, using SPI-3 a significant positive trend in the duration and magnitude of droughts (i.e., a tendency towards longer/greater drought duration/magnitude) is observed for some stations in the Iberian Peninsula, the Balkans, Italy and the south of the British and Irish Isles. Conversely, a negative trend (i.e., less severe droughts) is noted in southern Germany, Switzerland, eastern France, Northern Ireland, Scotland and the Netherlands. Similarly, SPI-12 trends exhibit high spatial variability, even for neighbouring stations. Notably, few stations exhibit statistically significant trends (Figures 5 and 7).

The surface area impacted by drought does not show significant changes, at 3 and 12 month time scales (Figure 8). Changes are statistically significant only in winter, with a reduction of almost 3.6% in the area impacted by severe drought ( $SPI-3 < -1.28$ ) between 1871 and 2018 (Table 3). The temporal evolution of the area impacted by drought reveals that the most extensive drought events were recorded in the 1870s, 1920s, 1940s, 1950s, 1970s, and 2010s. This also suggests that interannual temporal variability clearly dominates over long-term trends. Focusing on Northern and Southwest Europe, results

indicate no clear significant trends (Supplementary Figures S6 and S7). In south west Europe, the most extensive droughts were recorded in the 1940s and 1950s, with severe droughts ( $SPI < -1.28$ ) prevailing over more than 50% of the study domain. Severe drought was also extensive during the 1870s, 1890s, 2000s, and 2010s, but with less of a spatial fingerprint by comparison with the 1940s and 1950s.

## 4.2 | Spatial and temporal components of droughts

Given the spatial diversity of long-term SPI at the seasonal and annual time scale, we applied a PCA in an S-mode to delineate the main patterns of SPI-12 values from 1871–2018. Results suggest coherent spatial patterns, with clear linkages to the diversity of climate conditions across Western Europe (Figure 9). We retained 23 components, which together contribute more than 75.2% of the total variance. To illustrate the temporal variability corresponding to each component we selected the series with the highest correlation with each component as



**FIGURE 6** Spatial distribution of changes in the magnitude of drought events based on SPI-3 series (a) and (b) their statistical significance. Changes are expressed in cumulative  $z$ -units/decade

representative. The temporal evolution of SPI-12 for each representative series was explored for the period 1871–2018, and for the period 1851–2018 or 1861–2018 based on data availability.

Component 1 is representative of drought variability over Ireland (Figure 10), showing no clear long-term trend, with the exception of the summer SPI. While drought events are common over the whole series, the most severe droughts were observed during the 1850s, 1920s, 1930s, 1950s, and 1970s. As illustrated in Figure 10, statistically significant trends are mainly placed close to the diagonal of the heat maps, which represent the results of the analysis over short periods of 30-years in duration. This suggests that only few significant trends are observed for long periods, and accordingly that short-term variability dominates over long-term trends. The only exception corresponds to SPI-3 in summer, with a significant negative trend (the area in the plot framed by the dotted lines) noted for the periods of different duration (but in all cases for record lengths greater than 100-years) that start between 1880 and 1990 (in the  $X$ -axis) and finish between 2000 and 2018 (the  $Y$ -axis). This

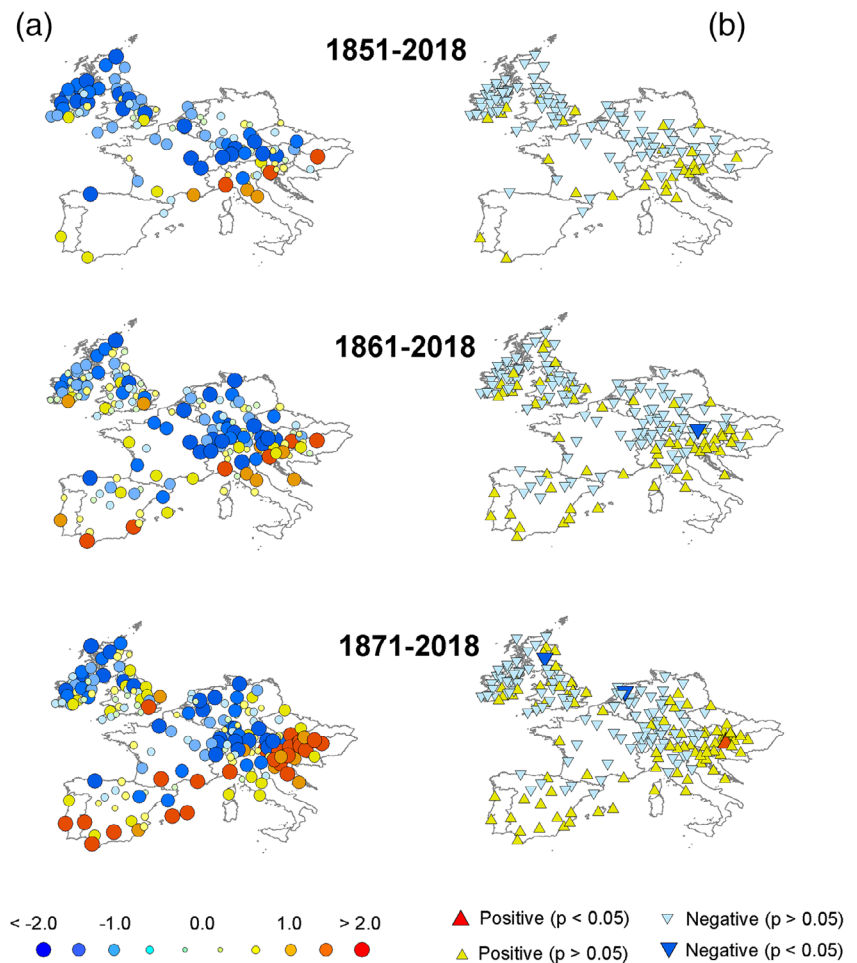
is depicted by the representative time series for this component (Cappoquinn station in Ireland).

Component 2 reveals the temporal variability of droughts in southern Germany, eastern France and most of Switzerland (Figure 11). This component is well-represented by the station of Karlsruhe in Germany, with the most severe droughts recorded in the 1850s, 1860s, 1900s, 1960s, and 1970s. Significant trends are only found for winter from 1851 to 2018. Annual SPI exhibits a significant positive trend from 1860 to 2000. The duration and magnitude of droughts based on SPI-3 show a significant reduction from 1851 to 2018. This seems to be due to drought behaviour at the beginning of the series. These patterns are not defined using SPI-12, for which no significant trends are identified.

The third component is mostly representative of the temporal evolution of drought in southern England, best represented by the Althorp Park series. Major drought episodes are recorded in the 1850s, 1900s, 1920s, 1970s, 1990s, and 2010s (Figure 12). Similar to the first and second components, no significant long-term trend is



**FIGURE 7** Spatial distribution of changes in the magnitude of drought events based on the SPI-12 series (a) and (b) their statistical significance. Changes are expressed in cumulative  $z$ -units/decade

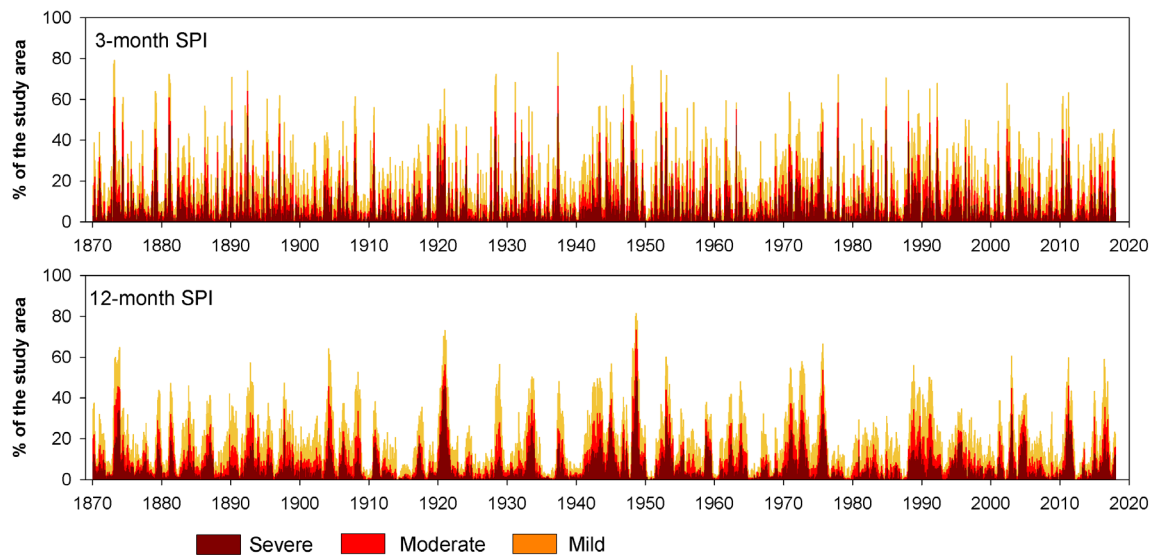


**TABLE 2** . Percentage of stations showing positive and negative trends in drought duration and magnitude obtained from SPI-3- and SPI-12 series for the periods 1851–2018, 1861–2018, and 1871–2018

	Negative ( $p < 0.05$ )	Negative ( $p > 0.05$ )	Positive ( $p > 0.05$ )	Positive ( $p < 0.05$ )
Magnitude 3 months (1851)	13.0	58.3	22.6	6.1
Magnitude 3 months (1861)	11.1	48.0	35.7	5.3
Magnitude 3 months (1871)	10.6	42.2	36.2	11.1
Duration 3 months (1851)	11.3	63.5	19.1	6.1
Duration 3 months (1861)	11.7	48.0	34.5	5.8
Duration 3 months (1871)	9.5	43.7	38.7	8.0
Magnitude 12 months (1851)	0.0	75.7	24.3	0.0
Magnitude 12 months (1861)	0.6	63.7	35.7	0.0
Magnitude 12 months (1871)	1.0	54.3	44.2	0.5
Duration 12 months (1851)	1.7	72.2	26.1	0.0
Duration 12 months (1861)	0.6	62.0	37.4	0.0
Duration 12 months (1871)	2.5	52.8	43.7	1.0

observed in this region. Significant trends are only found for short periods close to the diagonal of the heat maps for all the SPI, duration and magnitude series.

Component 4 captures the temporal variability of drought in northern Germany and the Netherlands (Figure 13), with the temporal evolution of drought



**FIGURE 8** Evolution of the European land area impacted by mild, moderate and severe droughts from 1871 to 2018

**TABLE 3** Trends in the total area (%) impacted by different drought categories during the period 1851–2018

	Winter	Spring	Summer	Autumn	Annual
Mild (whole Europe)	−9.2	3.0	6.4	2.5	0.9
Moderate (whole Europe)	−5.5	1.5	4.8	2.9	1.5
Severe (whole Europe)	−3.6*	1.4	2.8	1.7	1.4
Mild (Northern Europe)	−12.6*	−0.5	6.9	0.3	−4.0
Moderate (Northern Europe)	−9.0*	−0.3	5.3	1.1	−3.5
Severe (Northern Europe)	−6.3*	0.0	3.0	0.3	−0.8
Mild (Southern Europe)	−3.9	5.8	4.6	4.1	1.8
Moderate (Southern Europe)	−0.8	3.1	3.2	4.0	1.0
Severe (Southern Europe)	−0.1	2.4	2.1	2.8	1.2

Note: Percentage change is expressed for the whole study period.

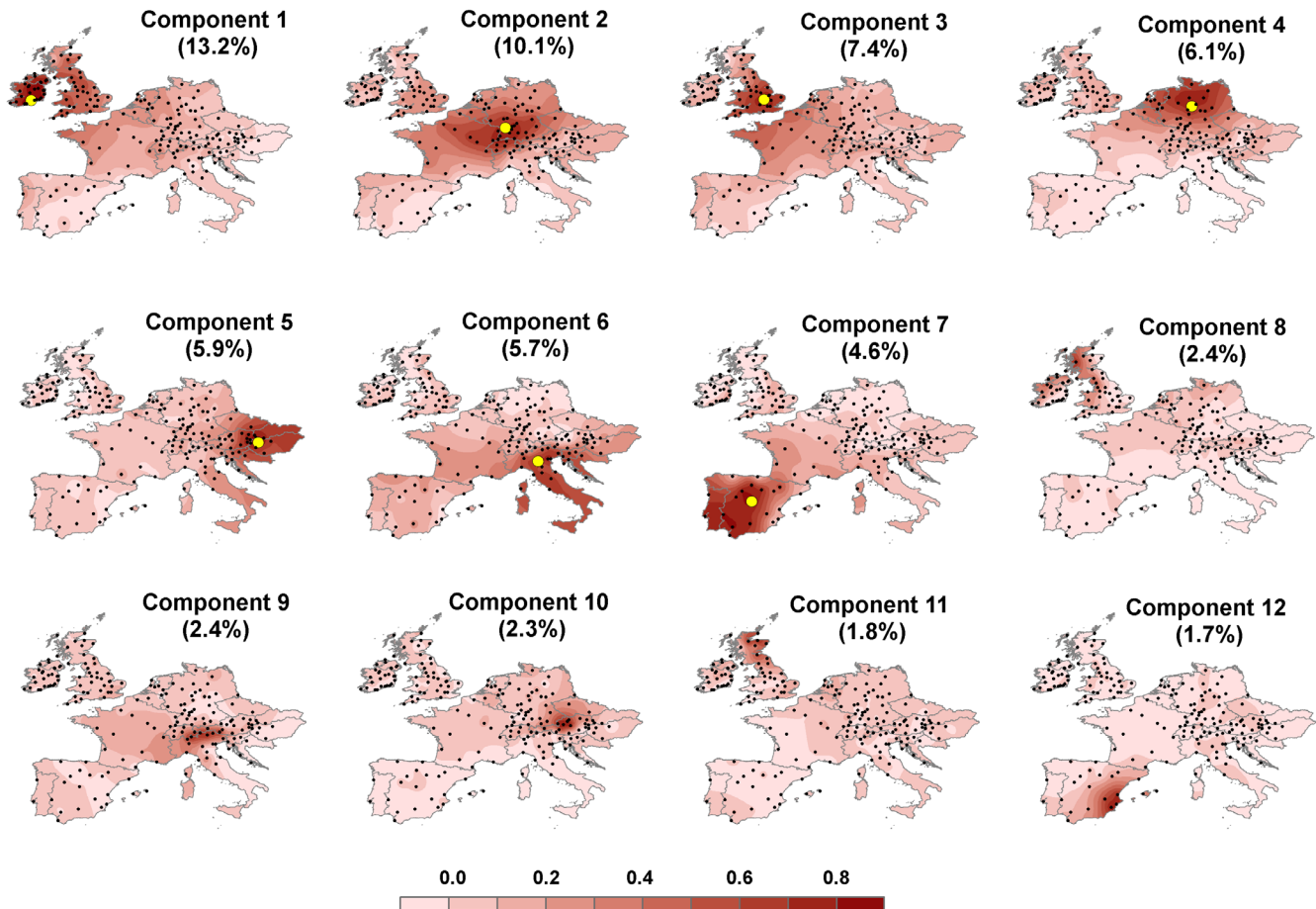
\*Significant at  $p < 0.05$ .

illustrated using the series at Göttingen in Germany for the period 1861–2018. The most severe drought events are evident during the 1910s and 1930s. Again, this region does not show long-term trends in the various drought metrics examined. Significant trends are only found for short time spans (e.g., a negative trend from 1950 to 2000 during summer), but in spring it seems that there is a longer positive trend starting almost in 1900.

Component 5 represents drought variability over eastern Europe, including Hungary, Eastern Austria, Slovakia and Eastern Croatia. This is the only region which exhibits long-term changes in drought with two contrasting periods: a humid period from 1890 to 1930 and a persistent drought period from the 1960s onwards (Figure 14). Correspondingly, negative trends in the annual, winter and spring SPI, as well as in the drought duration

and magnitude series, are evident from the beginning of the 20th century to present.

Component 6 summarizes drought variability in the majority of Italy and the western Balkans. This region experienced its main drought episodes during the 1920s and 1940s (Figure 15). In contrast, humid conditions dominate from the 1960s, especially in the past decade. Other drought metrics do not exhibit a significant long-term trend over this region. A similar temporal pattern is also noted for component 7 (Figure 16). In Iberia, the dominant role of natural variability is also noted, with drought conditions prevailing during the 1870s, 1880s, 1950s, 1990s, and 2000s. Significant trends are restricted to summer SPI from the 1950s. However, the decrease in SPI values has no influence on the trends in drought duration and magnitude. In the Northwestern UK, no



**FIGURE 9** Spatial distribution of the loadings from PCA using SPI-12 series for the period 1871–2018. Components 1 to 12 are shown. The proportion of variance explained by each component is also included. Large dots represent the location of the most representative meteorological station

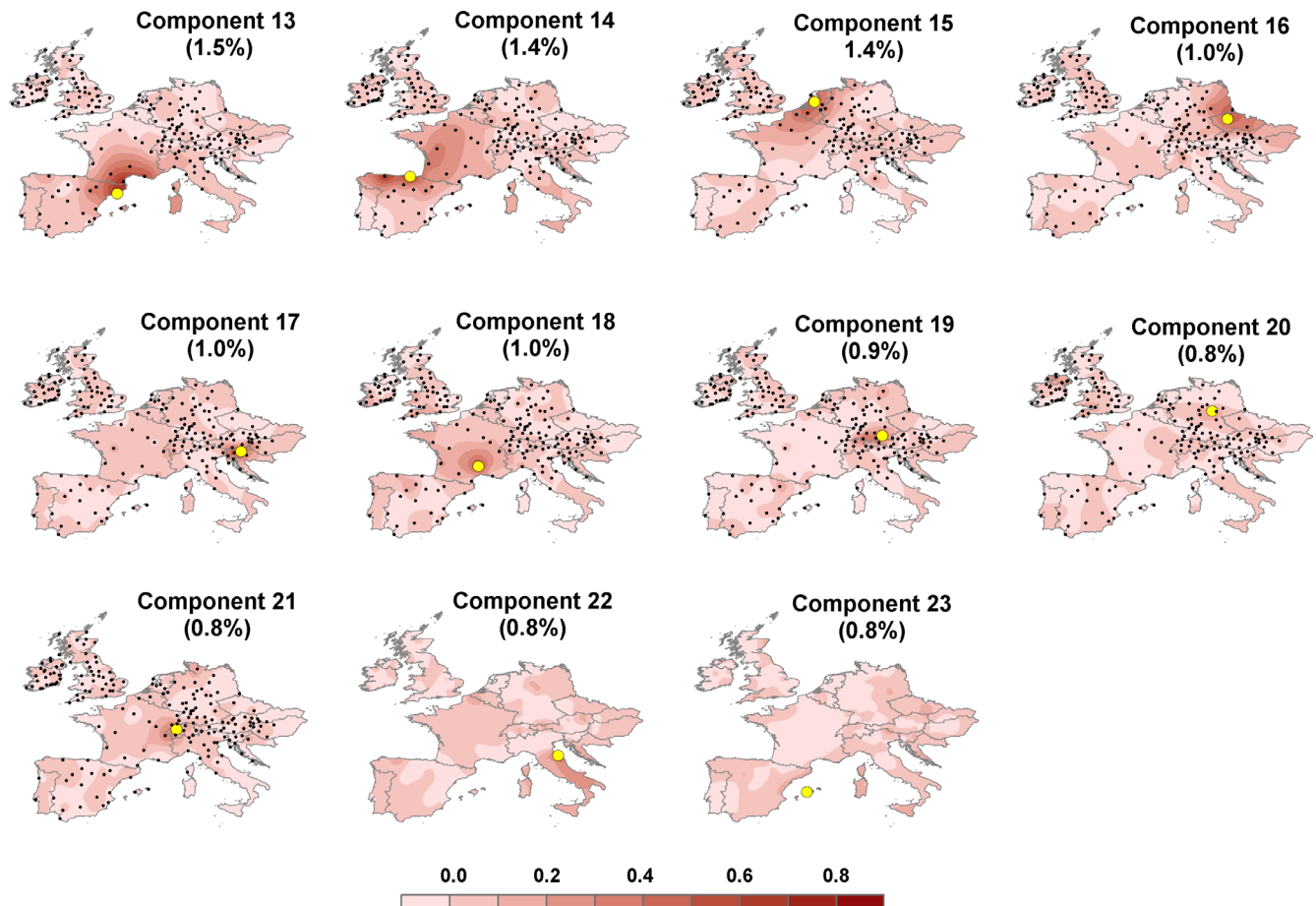
long-term trends in the SPI series are observed. As illustrated in Figure 17, drought conditions predominated for the periods 1850–1900 and 1930–1980. On the other hand, humid conditions were more pronounced between 1900 and 1930 and from 1990 to 2018. Significant trends are recorded for different periods of 50–60-years, suggesting the influence of important long-term climate cycles.

Running trends in the SPI and drought indices for the components 9–23 are shown in Supplementary Figures S8–S22. A quick inspection of these figures demonstrates that there are no clear long-term trends. This finding is evident for all components, including those corresponding to the Mediterranean region (e.g., Component 9 in Italy, component 13 in Northeastern Spain and Southwestern France). In Barcelona, which is a representative of component 13, dry conditions dominate from 2008, with no precedents since 1910. Nevertheless, more severe drought events were recorded between 1870 and 1905. In Northern Spain (component 14), no dominant long-term trends are observed, albeit with severe drought

events between 1890 and 1920 and between 1980 and 2005. Exceptionally, a long-term drying trend is recorded in Southeastern Spain (component 12). This trend is mostly impacted by the dominant humid conditions between 1880 and 1900. Thus, the recent dry periods recorded in the 1990s and 2010s can be seen as comparable to those recorded between 1910 and 1945 (Supplementary Figure S11). In other Mediterranean regions (e.g., component 18, Southern France), the last decades are mainly characterized by humid conditions. Conversely, the most severe droughts were recorded between 1915 and 1955 (Supplementary Figure S17). In Slovenia (component 17), dominant dry conditions were mainly recorded in the past four decades, and earlier in the series between 1850 and 1940 (Supplementary Figure S16).

## 5 | DISCUSSION

This study presents the first comprehensive assessment of long-term variability and trends in drought over Western



**FIGURE 9** Cont.: Spatial distribution of the loadings from PCA using SPI-12 series for the period 1871–2018. Components 13 to 23 are shown. The proportion of variance explained by each component is also included. Large dots represent the location of the most representative meteorological station

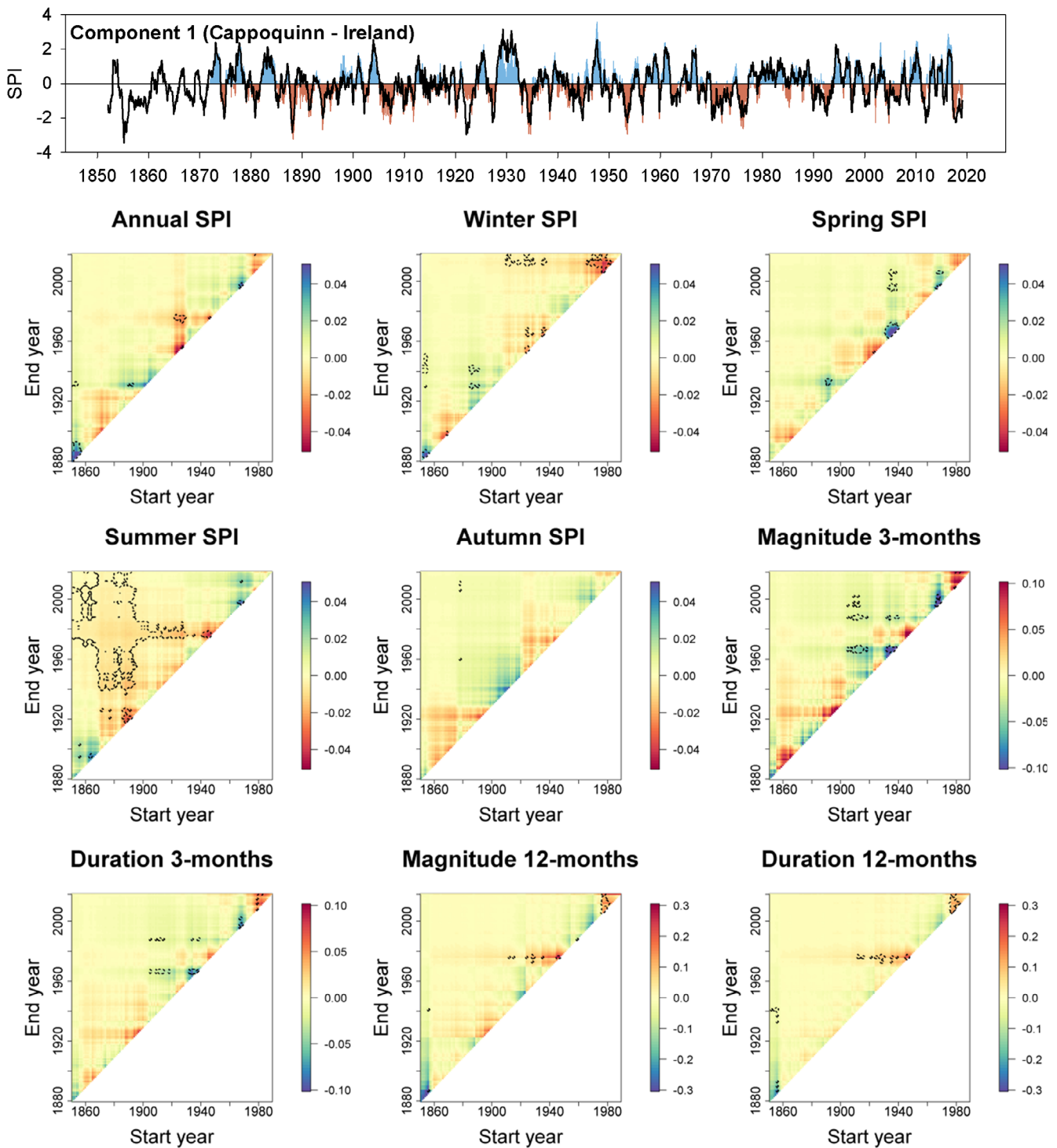
Europe, providing new perspectives on the severity of drought episodes over the instrumental period. Specifically, our assessment covers almost the whole of Western Europe and uses data from a relatively dense network of precipitation stations, which extend back to the mid-19th century. Previous studies have assessed long-term drought trends for specific regions in Europe (e.g., Todd *et al.*, 2013; Spraggs *et al.*, 2015; Paulo *et al.*, 2016; Noone *et al.*, 2017), or employed reconstruction approaches (e.g., Hanel *et al.*, 2018; Marvel *et al.*, 2019).

Our study stresses that from the long-term (1851–2018) perspective there are no generally consistent trends in droughts across Western Europe. This finding concurs with Lloyd-Hughes and Saunders (2002) and van der Schrier *et al.* (2006) who analysed drought and moisture variability over Europe during the 20th century using gridded datasets. Exceptionally, long-term trends were detected in a few regions, mainly in eastern Europe and in Ireland during summer. In the remaining regions, the identified trends were only observed for short periods, suggesting high interdecadal variability of drought. This

also indicates that anomalous drought episodes observed in Western Europe in the past two or three decades have several precedents, at least since 1850. This finding holds despite different climatic conditions prevailing in the region. For example, the increase of SPI values was generally the dominant pattern in some regions of Northern Europe, with less frequent and severe drought events. In Southern Europe, although the tendency towards more humid conditions was less evident, the long-term trend analysis did not suggest any tendency towards more severe droughts.

This finding seems to contradict previous studies that suggest an increase in drought severity over Southern Europe in recent decades (e.g., Gudmundsson and Seneviratne, 2016; Hoerling *et al.*, 2012; Stagge *et al.*, 2017; Vicente-Serrano *et al.*, 2014c). These differences might be simply explained by differences in study period. This issue is of particular importance in trend detection, given that the magnitude and significance of the observed trends can vary considerably, as a function of the length of the series and the selected study period (Hannaford *et*



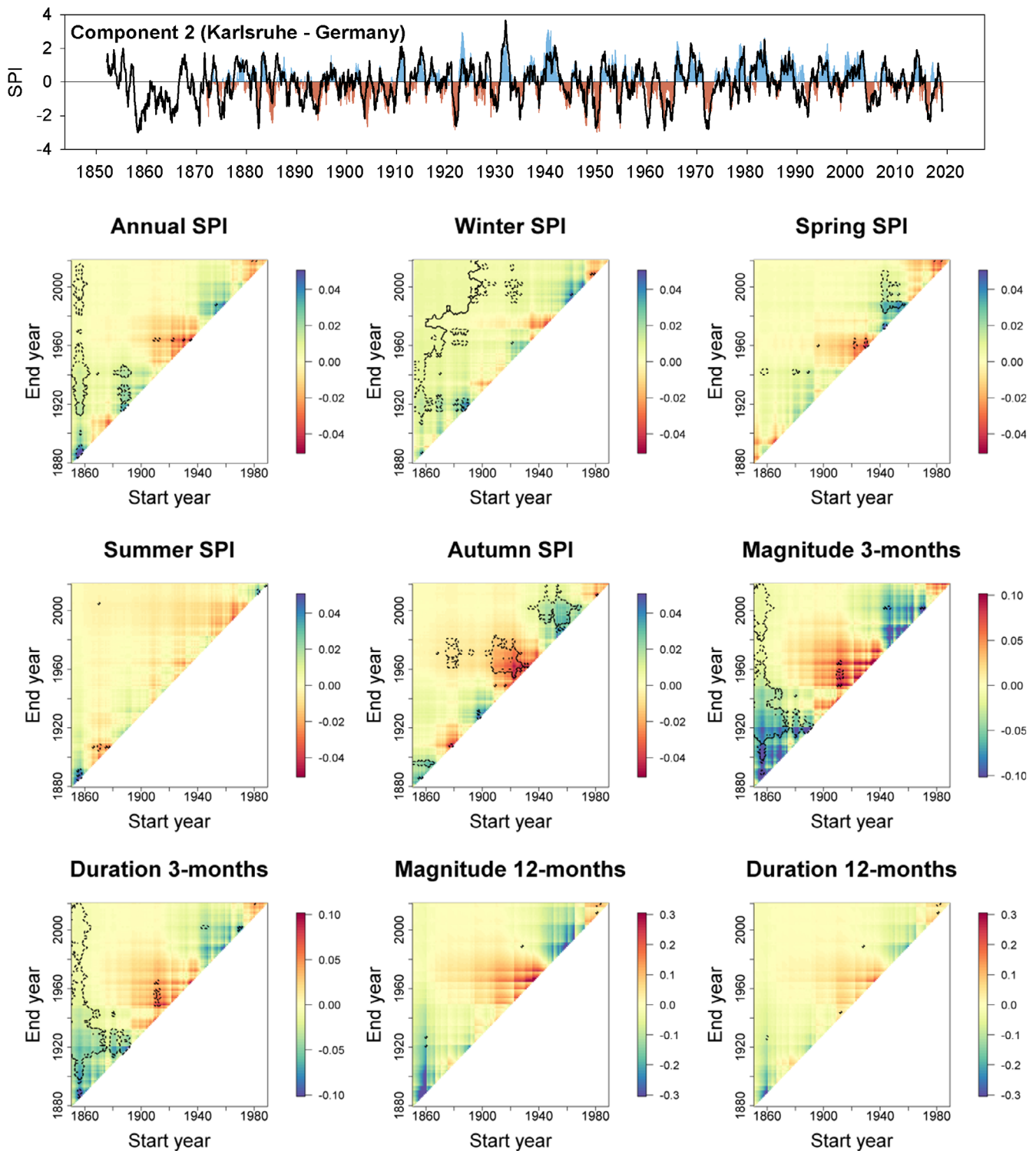


**FIGURE 10** Temporal evolution of the SPI-12 series of component 1 (surface) and the series of the most representative station (black line). The correlation between the series of the component and the series of the station is  $r = 0.85$ . Also shown are heat maps of 30-year running trends in annual and seasonal SPI and 3- and 12-month SPI drought duration and magnitude for the station of Cappoquin (Ireland). X and Y-axes indicate the start and end years, respectively, of the time slices for the running trend analysis. The scale indicates the magnitude of the trend based on the slope of the linear regression analysis. Dotted lines indicate periods with a significant trend ( $p < 0.05$ )

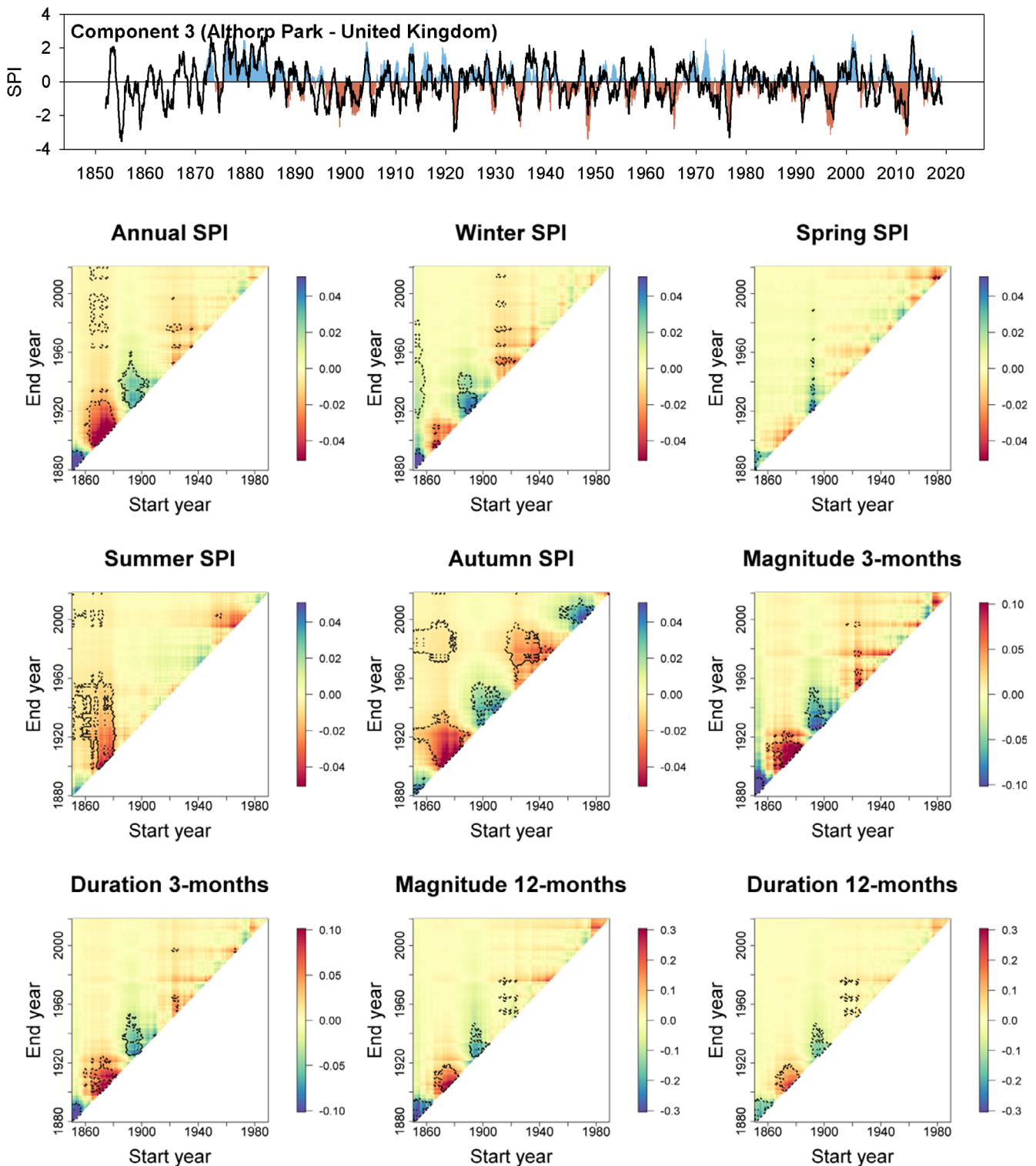
*al.*, 2013; Murphy *et al.*, 2013). The possible effect of the selection of the study period is particularly evident for component 13, represented by the observatory of

Barcelona, where no significant climate signal was observed due to the presence of longer and more severe droughts in the earlier decades of the series. This

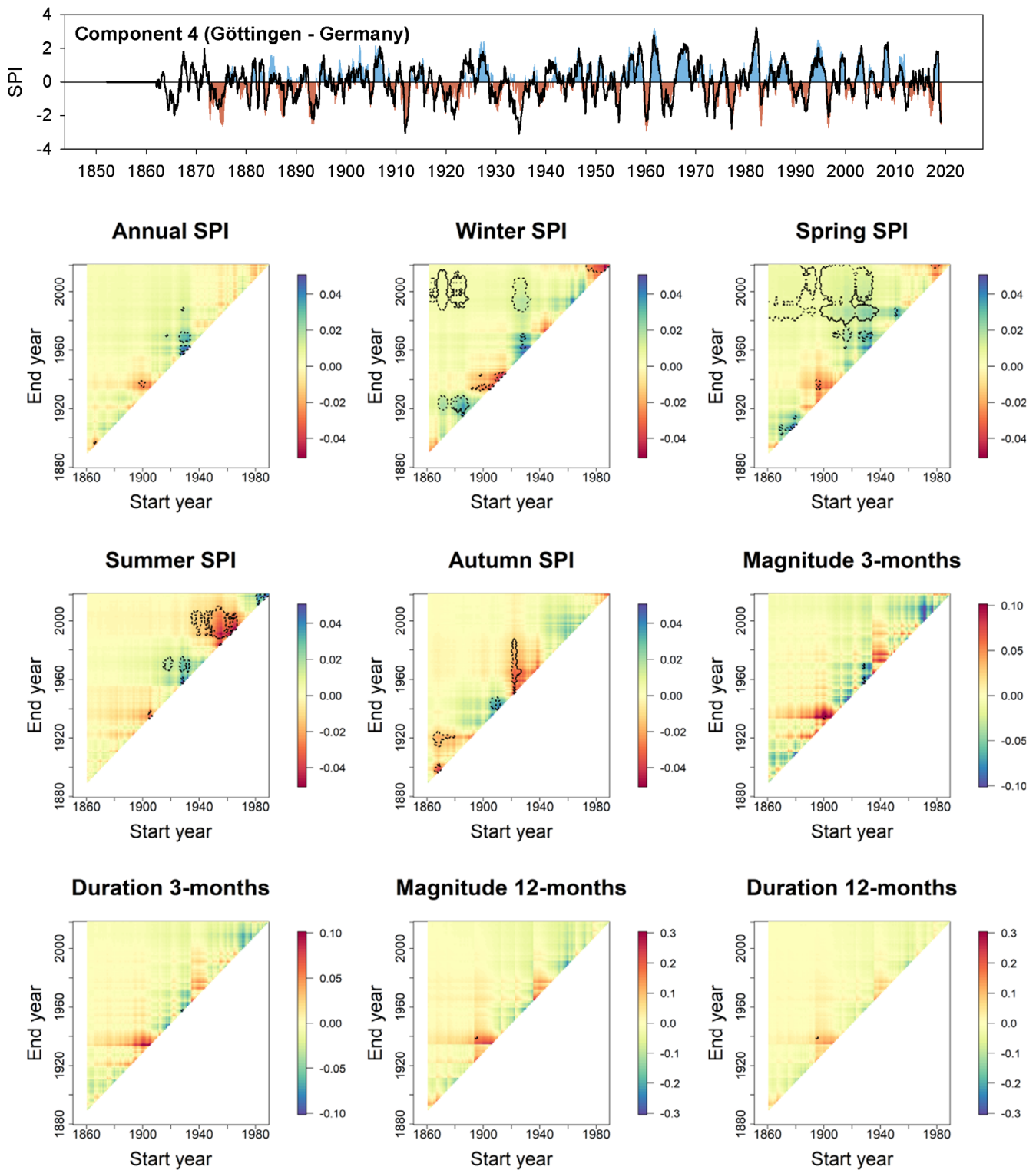




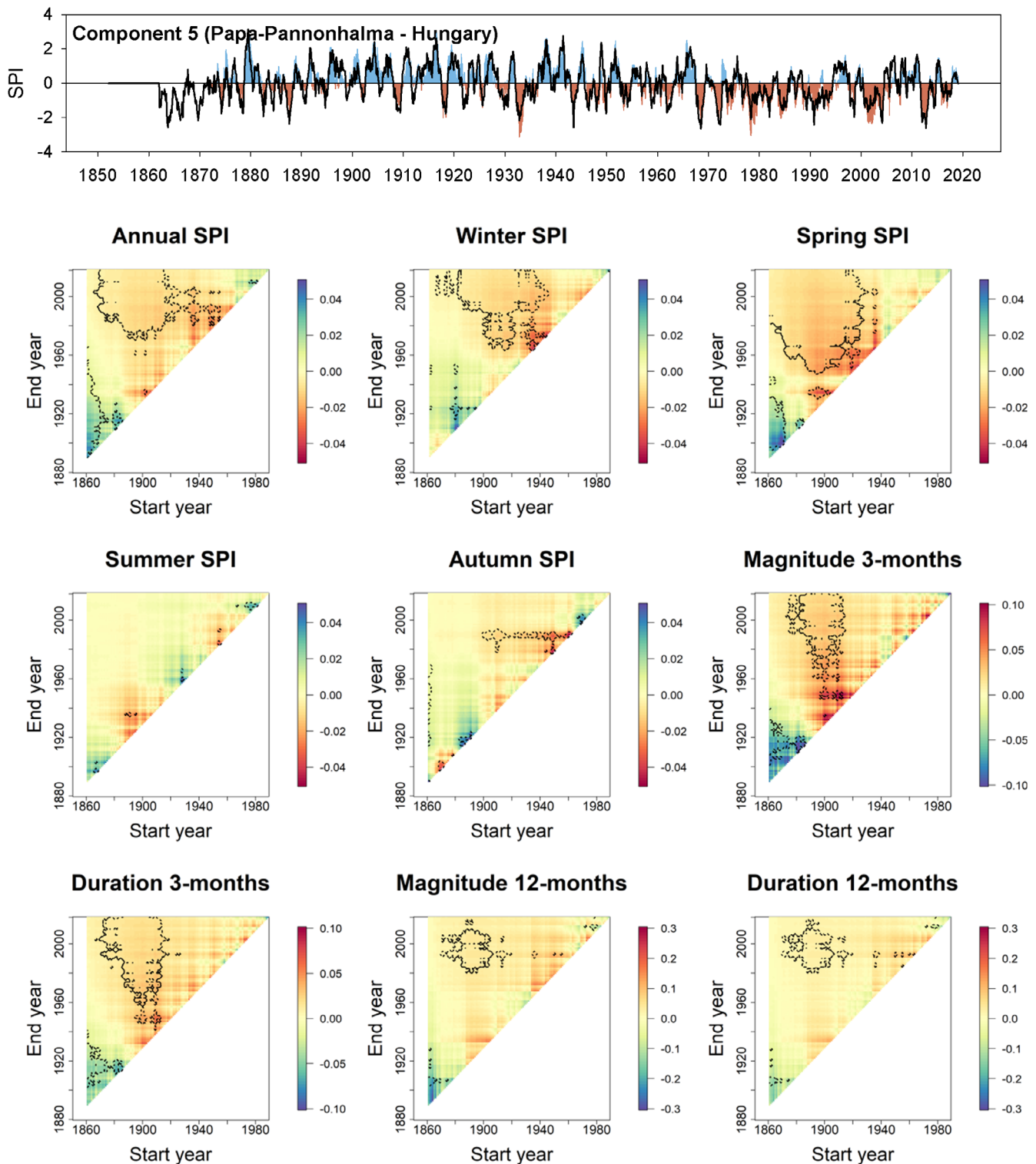
**FIGURE 11** Temporal evolution of the SPI-12 series of component 2 (surface) and the series of the most representative station (black line). The correlation between the series of the component and the series of the station is  $r = 0.75$ . Also shown are heat maps of 30-year running trends in annual and seasonal SPI and 3- and 12-month SPI drought duration and magnitude for the station of Karlsruhe (Germany). X and Y-axes indicate the start and end years, respectively, of the time slices for the running trend analysis. The scale indicates the magnitude of the trend based on the slope of the linear regression analysis. Dotted lines indicate periods with a significant trend ( $p < 0.05$ )



**FIGURE 12** Temporal evolution of the SPI-12 series of component 3 (surface) and the series of the most representative station (black line). The correlation between the series of the component and the series of the station is  $r = 0.76$ . Also shown are heat maps of 30-year running trends in annual and seasonal SPI and 3- and 12-month SPI drought duration and magnitude for the station of Althorp Park (UK). X and Y-axes indicate the start and end years, respectively, of the time slices for the running trend analysis. The scale indicates the magnitude of the trend based on the slope of the linear regression analysis. Dotted lines indicate periods with a significant trend ( $p < 0.05$ )

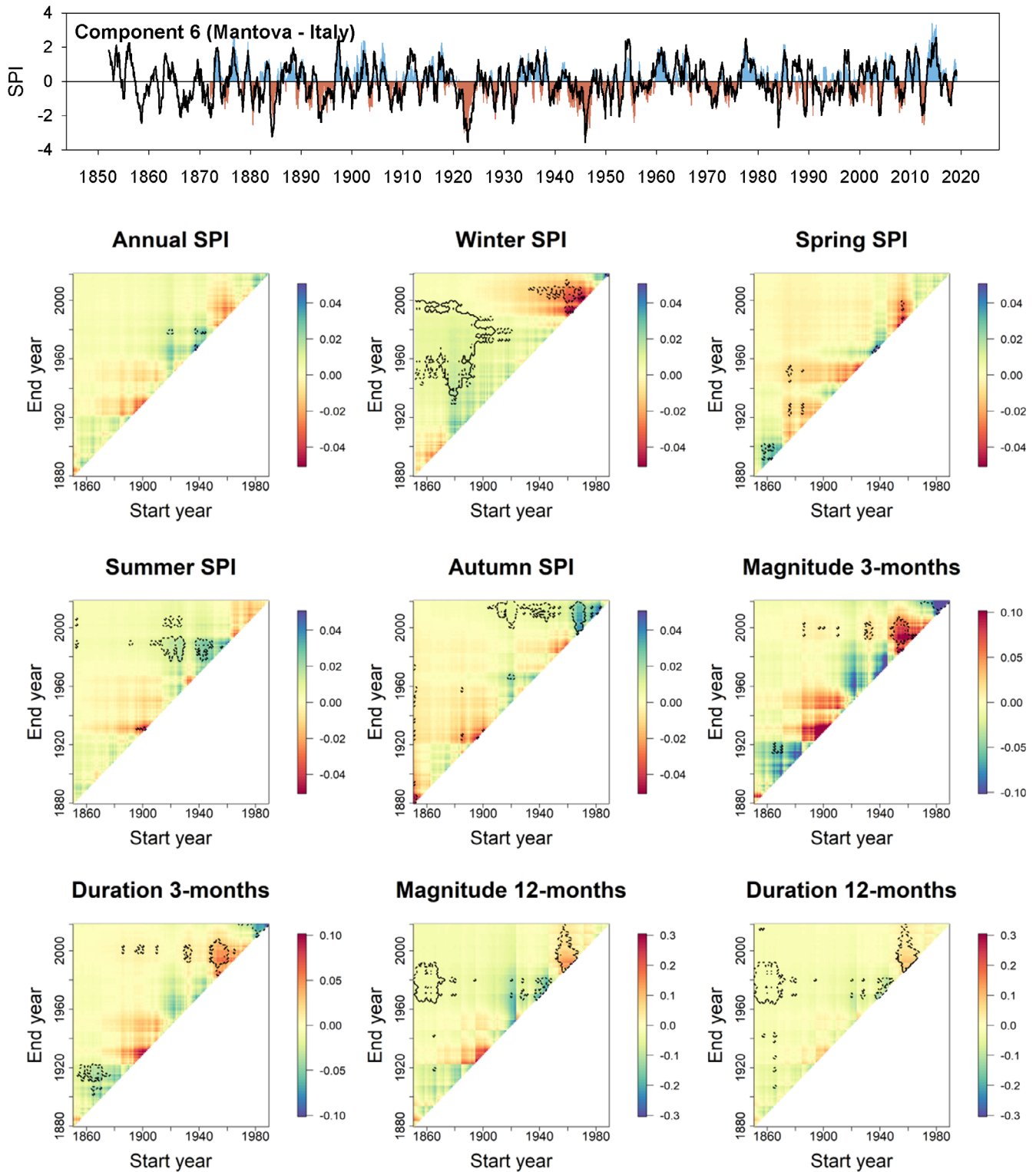


**FIGURE 13** Temporal evolution of the SPI-12 series of component 4 (surface) and the series of the most representative station (black line). The correlation between the series of the component and the series of the station is  $r = 0.80$ . Also shown are heat maps of 30-year running trends in annual and seasonal SPI and 3- and 12-month SPI drought duration and magnitude for the station of Göttingen (Germany). X and Y-axes indicate the start and end years, respectively, of the time slices for the running trend analysis. The scale indicates the magnitude of the trend based on the slope of the linear regression analysis. Dotted lines indicate periods with a significant trend ( $p < 0.05$ )



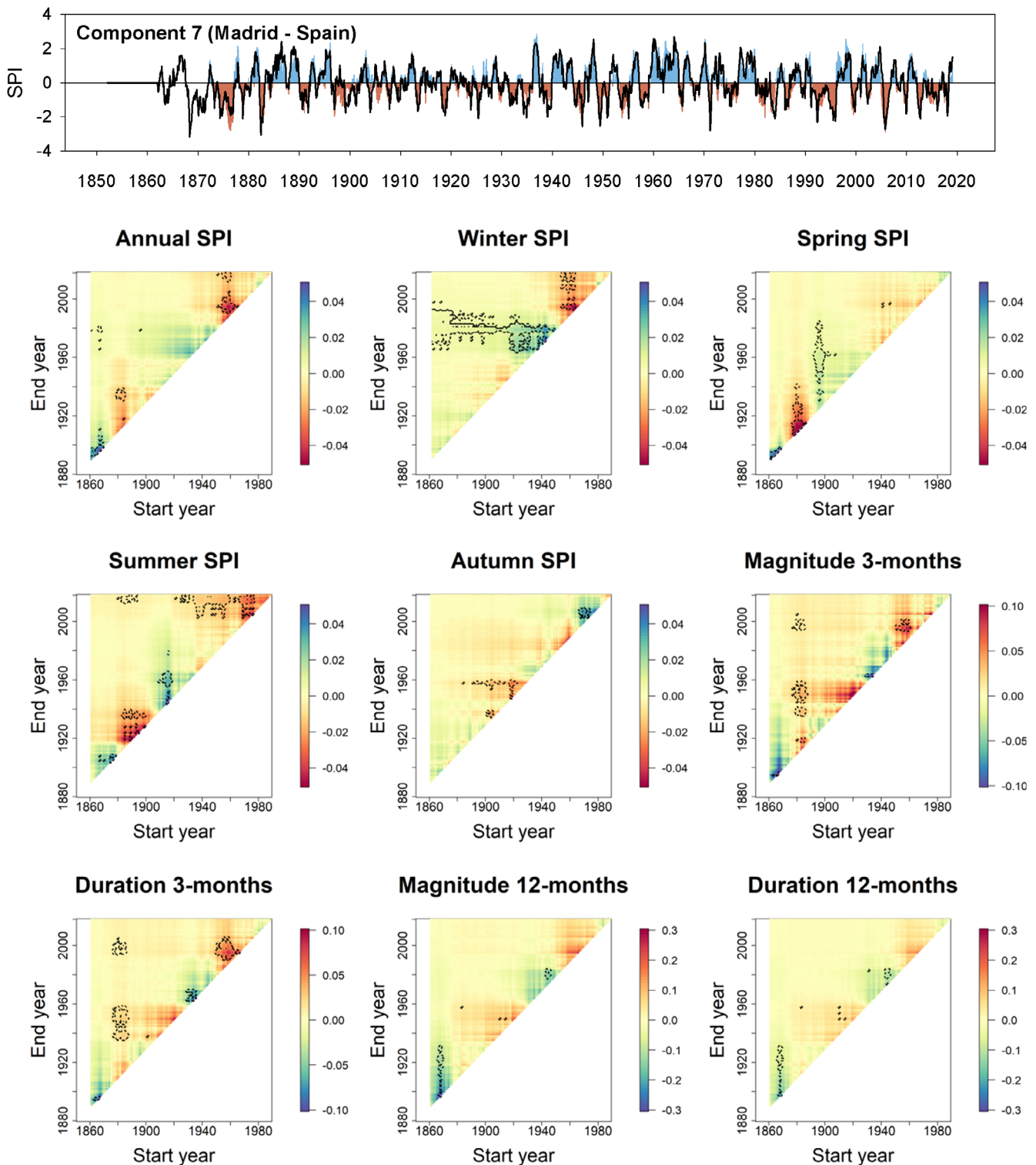
**FIGURE 14** Temporal evolution of the SPI-12 series of component 5 (surface) and the series of the most representative station (black line). The correlation between the series of the component and the series of the station is  $r = 0.84$ . Also shown are heat maps of 30-year running trends in annual and seasonal SPI and 3- and 12-month SPI drought duration and magnitude for the station of Papa-Pannonhalma (Hungary). X and Y-axes indicate the start and end years, respectively, of the time slices for the running trend analysis. The scale indicates the magnitude of the trend based on the slope of the linear regression analysis. Dotted lines indicate periods with a significant trend ( $p < 0.05$ )



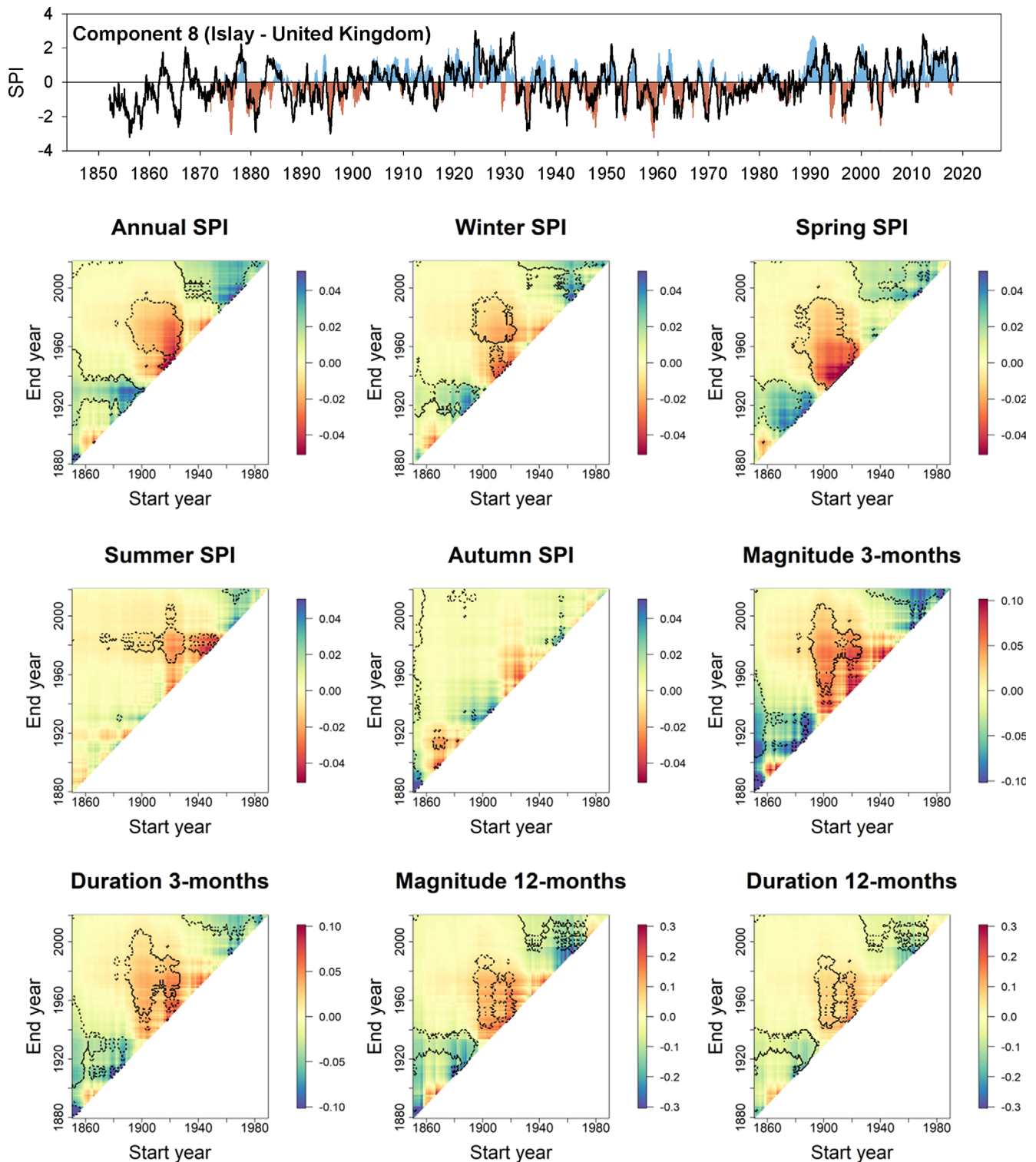


**FIGURE 15** Temporal evolution of the SPI-12 series of component 6 (surface) and the series of the most representative station (black line). The correlation between the series of the component and the series of the station is  $r = 0.78$ . Also shown are heat maps of 30-year running trends in annual and seasonal SPI and 3- and 12-month SPI drought duration and magnitude for the station of Mantova (Italy). X and Y-axes indicate the start and end years, respectively, of the time slices for the running trend analysis. The scale indicates the magnitude of the trend based on the slope of the linear regression analysis. Dotted lines indicate periods with a significant trend ( $p < 0.05$ )





**FIGURE 16** Temporal evolution of the SPI-12 series of component 7 (surface) and the series of the most representative station (black line). The correlation between the series of the component and the series of the station is  $r = 0.86$ . Also shown are heat maps of 30-year running trends in annual and seasonal SPI and 3- and 12-month SPI drought duration and magnitude for the station of Madrid (Spain). X and Y-axes indicate the start and end years, respectively, of the time slices for the running trend analysis. The scale indicates the magnitude of the trend based on the slope of the linear regression analysis. Dotted lines indicate periods with a significant trend ( $p < 0.05$ )



**FIGURE 17** Temporal evolution of the SPI-12 series of component 8 (surface) and the series of the most representative station (black line). The correlation between the series of the component and the series of the station is  $r = 0.70$ . Also shown are heat maps of 30-year running trends in annual and seasonal SPI and 3- and 12-month SPI drought duration and magnitude for the station of Islay (UK). X and Y-axes indicate the start and end years, respectively, of the time slices for the running trend analysis. The scale indicates the magnitude of the trend based on the slope of the linear regression analysis. Dotted lines indicate periods with a significant trend ( $p < 0.05$ )

highlights the importance of conducting trend assessments using long-term data and the importance of ongoing national and international data rescue initiatives (Brunet and Jones, 2011; Ryan *et al.*, 2018).

We emphasize that our findings should be seen in the context of the drought metric applied. Our assessment of drought characteristics is based on SPI, which is a precipitation-based metric. For a long-term assessment of drought in the region, it is not possible to use metrics that employ other important variables (e.g., streamflow, soil moisture, or AED). This is simply due to data scarcity of these variables. For example, streamflow data are available, with adequate density, only for the last few decades (Blöschl *et al.*, 2019; Vicente-Serrano *et al.*, 2019). This is also the case for the large number of meteorological variables necessary to quantify AED (e.g., wind speed, relative humidity and solar radiation). Studies that have analysed long-term drought trends using hydrological metrics, are based on reconstructions and model simulations (Hanel *et al.*, 2018), which have large uncertainty (Stegehuis *et al.*, 2013; Cheng *et al.*, 2017). Thus, the lack of trends presented in our study, should be seen within the context of our study design.

It is necessary to stress that this study may be affected by some limitations. For example, Murphy *et al.* (2019, 2020) have shown that pre-1870 winter precipitation in north West Europe is likely too low due to undercatch of snow. Such changes that affect multiple stations simultaneously may not be detected using relative homogenisation methods and they could affect winter and annual SPI trends for stations in the British and Irish Isles. Moreover, the unequal distribution of gauges could affect the obtained drought patterns, mostly for southern Europe in which spatial differences in the drought evolution are stronger. In any case, the unequal station coverage would not affect the intended application of the PCA in this study, which was not intended to represent the main patterns of drought variability but to identify regions with homogeneous behaviour allowing for a more straightforward analysis of the long-term variability and trends.

Our findings do not necessarily contradict several recent works that have indicated an increase in the frequency, severity and duration of droughts in Western Europe in recent decades. For example, according to Robinson *et al.* (2017), AED has significantly increased in northern West Europe over the last decades. A similar finding has also been confirmed by Vicente-Serrano *et al.* (2014a) for southern Europe, being mostly associated with an increase in air temperature and decline in relative humidity. Some studies indicate that streamflow variability has been generally less impacted by the increase in AED (Vicente-Serrano *et al.*, 2019), mainly due to the stronger response of streamflow to precipitation than to

AED (Yang *et al.*, 2018). Nonetheless, changes in AED could have more influence on drought in regions impacted by strong land cover changes (e.g., southern Europe). In such environments, natural revegetation in humid headwaters and the generation of new irrigated lands (García-Ruiz *et al.*, 2011) could favour higher evapotranspiration under enhanced AED and accordingly increase hydrological drought conditions downstream (Vicente-Serrano *et al.*, 2017). In addition, increased AED would enhance the severity of droughts associated with precipitation deficit. Recently, this dependency has been confirmed by García-Herrera *et al.* (2019) for the 2016/2017 drought event in Europe. Several ecological studies have reported an enhancement of drought impacts during recent decades in some European regions, albeit with no significant precipitation changes (e.g., Carnicer *et al.*, 2011; Vicente-Serrano *et al.*, 2012; Peñuelas *et al.*, 2018). Enhanced AED serves to increase vegetation stress during periods of negative soil moisture anomalies, irrespective of the vapour pressure deficit control on stomatal conductance (Zhang *et al.*, 2019). This situation would reduce biomass production and increase the risk of forest mortality (Allen *et al.*, 2015; Vicente-Serrano *et al.*, 2019). In this context, the findings of this study stress that although the increase of drought severity and its environmental and/or hydrological impacts cannot be supported by the decrease in precipitation; it is likely they are more linked to human transformations (e.g., irrigation, land cover changes, etc.) or to observed increases in AED under global warming (Vicente-Serrano *et al.*, 2020a, 2020b). The thermodynamic processes associated with an AED enhancement in recent decades are intense in the region (Seneviratne *et al.*, 2010; Hirschi *et al.*, 2011; Teuling *et al.*, 2013). Herein, what are termed 'global-change-type-droughts' by Breshears *et al.* (2005) to refer to drought episodes under global warming, seems to be representative of possible drought intensification in Western Europe in recent decades, associated with warming conditions and related thermodynamic processes and feedbacks. Thus, it can be concluded that drought intensification in Western Europe cannot be attributed to precipitation deficit, at least in the last 170-years.

With respect to those studies that usually classify Europe into large domains (e.g., northern vs. southern Europe) in order to characterize drought variability and trends, our study indicates that this approach has a degree of uncertainty, recalling the strong spatial variability of drought. The principal component analysis showed consistent spatial patterns of drought, whose temporal variability was homogenous. However, the temporal variability of drought showed considerable differences amongst neighbouring regions. This strong spatial

and temporal variability was identified at the regional scale in Europe, including Spain (e.g., Vicente-Serrano *et al.*, 2004; Vicente-Serrano, 2006b), Portugal (e.g., Santos *et al.*, 2010), Italy (e.g., Bonaccorso *et al.*, 2003) and Serbia (e.g., Gocic and Trajkovic, 2014), amongst others. This strong variability is mainly attributed to the complex atmospheric configurations that control climate in the region. In this context, although the North Atlantic Oscillation (NAO) is the dominant circulation pattern controlling drought variability in Europe (López-Moreno *et al.*, 2008), other large-scale circulation patterns also contribute to climate variability in specific European regions (Trigo *et al.*, 2009; Kingston *et al.*, 2015; Vicente-Serrano *et al.*, 2016; Manzano *et al.*, 2019). This is more pronounced in the Mediterranean, where the influence of local/regional circulation variability induces more heterogeneous drought patterns, even for small areas (Vicente-Serrano and López-Moreno, 2006).

## 6 | CONCLUSIONS

This study stresses the following findings:

- Spatial differences were observed in the SPI12 magnitude trend, where a positive trend was found in the British and Irish Isles, Northern France and Germany, and a negative trend in the southeast of the Iberian Peninsula, Italy and Balkans. In addition, this great spatial variability is reflected in the 23 components of the PCA to obtain 75.2% of the variance explained.
- Seasonal differences were found in the SPI3 magnitude trend, where a negative trend in summer was detected, especially in the British and Irish Isles. In addition, a reduction in the area affected by severe drought was detected, especially in winter.
- With few exceptions, trends in droughts over Western Europe are statistically non-significant from a long-term perspective.
- Changes in droughts are spatially variable, especially on a seasonal basis. Therefore, detailed local and regional assessment of drought variability should be of high priority in Western Europe. Such assessments would provide local policy and decision-makers with the most appropriate and reliable information for understanding drought change and management.

## ACKNOWLEDGEMENTS

This work was supported by the research projects PCIN-2015-220 and CGL2017-82216-R financed by the Spanish Commission of Science and Technology and FEDER, IMDROFLOOD financed by the WaterWorks 2014 co-funded call of the European Commission, CROSSDRO


financed by the AXIS (Assessment of Cross[X] - sectorial climate Impacts and pathways for Sustainable transformation) JPI-Climate co-funded call of the European Commission, INDECIS, which is part of ERA4CS, an ERA-NET initiated by JPI Climate, and funded by FORMAS (SE), DLR (DE), BMWFW (AT), IFD (DK), MINECO (ES), ANR (FR), FCT (PT) with co-funding by the European Union (Grant 690462), Irish Research Council COALESCE grant (COALESCE/2019/43). Dhais Peña-Angulo received a 'Juan de la Cierva' postdoctoral contract (FJCI-2017-33652 Spanish Ministry of Economy and Competitiveness, MEC), Marco Turco has received funding from the Spanish Ministry of Science, Innovation and Universities through the project PREFIRE (RTI2018-099711-J-I00). Our grateful thanks extend to Instituto Português do Mar e da Atmosfera (IPMA), Portugal, Agencia Estatal de Meteorología (AEMET), Spain, Deutscher Wetterdienst (Germany), MétéoFrance (France), Met Office (UK), Koninklijk Nederlands Meteorologisch Instituut (KNMI), Netherlands, the Global Historical Climatology Network (GHCN), and the European Climate Assessment & Dataset (ECAD) for providing precipitation data used in this study.

## ORCID

Sergio M. Vicente-Serrano  <https://orcid.org/0000-0003-2892-518X>

Conor Murphy  <https://orcid.org/0000-0003-4891-2650>

Yves Tramblay  <https://orcid.org/0000-0003-0481-5330>

Neil Mac Donald  <https://orcid.org/0000-0003-0350-7096>

Miquel Tomas-Burguera  <https://orcid.org/0000-0002-3035-4171>

Ahmed El Kenawy  <https://orcid.org/0000-0001-6639-6253>

## REFERENCES

- Allen, C.D., Breshears, D.D. and McDowell, N.G. (2015) On underestimation of global vulnerability to tree mortality and forest die-off from hotter drought in the Anthropocene. *Ecosphere*, 6 (8), art129. <https://doi.org/10.1890/ES15-00203.1>.
- Beguera, S., Vicente-Serrano, S.M., Reig, F. and Latorre, B. (2014) Standardized precipitation evapotranspiration index (SPEI) revisited: parameter fitting, evapotranspiration models, tools, datasets and drought monitoring. *International Journal of Climatology*, 34(10), 3001–3023. <https://doi.org/10.1002/joc.3887>.
- Beniston, M., Stephenson, D.B., Christensen, O.B., Ferro, C.A.T., Frei, C., Goyette, S., Halsnaes, K., Holt, T., Jylhä, K., Koffi, B., Palutikof, J., Schöll, R., Semmler, T. and Woth, K. (2007) Future extreme events in European climate: an exploration of regional climate model projections. *Climatic Change*, 81 (SUPPL. 1), 71–95. <https://doi.org/10.1007/s10584-006-9226-z>.
- Blöschl, G., Hall, J., Viglione, A., Perdigão, R.A.P., Parajka, J., Merz, B., Lun, D., Arheimer, B., Aronica, G.T., Bilbashi, A.,



- Boháč, M., Bonacci, O., Borga, M., Čanjevac, I., Castellarin, A., Chirico, G.B., Claps, P., Frolova, N., Ganora, D., Gorbachova, L., Gül, A., Hannaford, J., Harrigan, S., Kireeva, M., Kiss, A., Kjeldsen, T.R., Kohnová, S., Koskela, J.J., Ledvinka, O., Macdonald, N., Mavrova-Guirguinova, M., Mediero, L., Merz, R., Molnar, P., Montanari, A., Murphy, C., Osuch, M., Ovcharuk, V., Radevski, I., Salinas, J.L., Sauquet, E., Šraj, M., Szolgay, J., Volpi, E., Wilson, D., Zaimi, K. and Živković, N. (2019) Changing climate both increases and decreases European river floods. *Nature*, 573 (7772), 108–111. <https://doi.org/10.1038/s41586-019-1495-6>.
- Bonaccorso, B., Bordi, I., Cancelliere, A., Rossi, G. and Sutera, A. (2003) Spatial variability of drought: an analysis of the SPI in Sicily. *Water Resources Management*, 17, 273–296.
- Bordi, I., Fraedrich, K. and Sutera, A. (2009) Observed drought and wetness trends in Europe: an update. *Hydrology and Earth System Sciences*, 13, 1519–1530.
- Brázdil, R., Trnka, M., Mikšovský, J., Řezníčková, L. and Dobrovolný, P. (2015) Spring-summer droughts in the Czech Land in 1805–2012 and their forcings. *International Journal of Climatology*, 35, 1405–1421.
- Breshears, D.D., Cobb, N.S., Rich, P.M., Price, K.P., Allen, C.D., Balice, R.G., Romme, W.H., Kastens, J.H., Floyd, M.L., Belnap, J., Anderson, J.J., Myers, O.B. and Meyer, C.W. (2005) Regional vegetation die-off in response to global-change-type drought. *Proceedings of the National Academy of Sciences of the United States of America*, 102(42), 15144–15148. <https://doi.org/10.1073/pnas.0505734102>.
- Briffa, K.R., van der Schrier, G. and Jones, P.D. (2009) Wet and dry summers in Europe since 1750: evidence of increasing drought. *International Journal of Climatology*, 29, 1894–1905.
- Brunet, M. and Jones, P. (2011) Data rescue initiatives: bringing historical climate data into the 21st century. *Climate Research*, 47, 29–40. <https://doi.org/10.3354/cr00960>.
- Carnicer, J., Coll, M., Ninyerola, M., Pons, X., Sánchez, G. and Peñuelas, J. (2011) Widespread crown condition decline, food web disruption, and amplified tree mortality with increased climate change-type drought. *Proceedings of the National Academy of Sciences of the United States of America*, 108(4), 1474–1478. <https://doi.org/10.1073/pnas.1010070108>.
- Cheng S, Huang J, Ji F, Lin L. 2017. Uncertainties of soil moisture in historical simulations and future projections. *Journal of Geophysical Research: Atmospheres*. John Wiley & Sons, Ltd 122(4): 2239–2253. DOI: <https://doi.org/10.1002/2016JD025871>.
- Cindrić, K., Telišman Prtenjak, M., Herceg-Bulić, I., Mihajlović, D. and Pasarić, Z. (2016) Analysis of the extraordinary 2011/2012 drought in Croatia. *Theoretical and Applied Climatology*, 123, 503–522.
- Di Lena, B., Vergni, L., Antenucci, F., Todisco, F. and Mannocchi, F. (2014) Analysis of drought in the region of Abruzzo (Central Italy) by the Standardized Precipitation Index. *Theoretical and Applied Climatology*, 115, 41–52.
- Domínguez-Castro, F., Vicente-Serrano, S.M., Tomás-Burguera, M., Peña-Gallardo, M., Beguería, S., El Kenawy, A., Luna, Y. and Morata, A. (2019) High spatial resolution climatology of drought events for Spain: 1961–2014. *International Journal of Climatology*, 39, 5046–5062. <https://doi.org/10.1002/joc.6126>.
- Forzieri, G., Feyen, L., Rojas, R., Flörke, M., Wimmer, F. and Bianchi, A. (2014) Ensemble projections of future streamflow droughts in Europe. *Hydrology and Earth System Sciences*, 18 (1), 85–108. <https://doi.org/10.5194/hess-18-85-2014>.
- García-Herrera, R., Garrido-Pérez, J.M., Barriopedro, D., Ordóñez, C., Vicente-Serrano, S.M., Nieto, R., Gimeno, L., Sorí, R. and Yiou, P. (2019) The European 2016/2017 drought. *Journal of Climate*, 32, 3169–3187.
- García-Herrera, R., Paredes, D., Trigo, R.M., Trigo, I.F., Hernández, E., Barriopedro, D. and Mendes, M.A. (2007) The outstanding 2004/05 drought in the Iberian Peninsula: associated atmospheric circulation. *Journal of Hydrometeorology*, 8, 483–498.
- García-Ruiz, J.M., López-Moreno, J.I., Vicente-Serrano, S.M., Lasanta-Martínez, T. and Beguería, S. (2011) Mediterranean water resources in a global change scenario. *Earth-Science Reviews*, 105(3–4), 121–139. <https://doi.org/10.1016/j.earscirev.2011.01.006>.
- Gocic, M. and Trajkovic, S. (2014) Spatiotemporal characteristics of drought in Serbia. *Journal of Hydrology*, 510, 110–123.
- Gudmundsson, L. and Seneviratne, S.I. (2016) Anthropogenic climate change affects meteorological drought risk in Europe. *Environmental Research Letters*, 11(4). <https://doi.org/10.1088/1748-9326/11/4/044005>.
- Gudmundsson, L., Seneviratne, S.I. and Zhang, X. (2017) Anthropogenic climate change detected in European renewable freshwater resources. *Nature Climate Change*, 7(11), 813–816. <https://doi.org/10.1038/nclimate3416>.
- Hamed, K.H. and Ramachandra Rao, A. (1998) A modified Mann-Kendall trend test for autocorrelated data. *Journal of Hydrology*, 204(1–4), 182–196. [https://doi.org/10.1016/S0022-1694\(97\)00125-X](https://doi.org/10.1016/S0022-1694(97)00125-X).
- Hanel, M., Rakovec, O., Markonis, Y., Máca, P., Samaniego, L., Kyselý, J. and Kumar, R. (2018) Revisiting the recent European droughts from a long-term perspective. *Scientific Reports*, 8(1), 9499. <https://doi.org/10.1038/s41598-018-27464-4>.
- Hannaford, J., Buys, G., Stahl, K. and Tallaksen, L.M. (2013) The influence of decadal-scale variability on trends in long European streamflow records. *Hydrology and Earth System Sciences*, 17(7), 2717–2733. <https://doi.org/10.5194/hess-17-2717-2013>.
- Hayes, M., Svoboda, M., Wall, N. and Widhalm, M. (2011) The Lincoln declaration on drought indices: universal meteorological drought index recommended. *Bulletin of the American Meteorological Society*, 92(4), 485–488. <https://doi.org/10.1175/2010BAMS3103.1>.
- Hirschi, M., Seneviratne, S.I., Alexandrov, V., Boberg, F., Boroneant, C., Christensen, O.B., Formayer, H., Orłowsky, B. and Stepanek, P. (2011) Observational evidence for soil-moisture impact on hot extremes in southeastern Europe. *Nature Geoscience*, 4(1), 17–21. <https://doi.org/10.1038/ngeo1032>.
- Hisdal, H., Stahl, K., Tallaksen, L.M. and Demuth, S. (2001) Have streamflow droughts in Europe become more severe or frequent? *International Journal of Climatology*, 21(3), 317–333. <https://doi.org/10.1002/joc.619>.
- Hoerling, M., Eischeid, J., Perlwitz, J., Quan, X., Zhang, T., Pegion, P., Hoerling, M., Eischeid, J., Perlwitz, J., Quan, X., Zhang, T. and Pegion, P. (2012) On the increased frequency of Mediterranean drought. *Journal of Climate*, 25(6), 2146–2161. <https://doi.org/10.1175/JCLI-D-11-00296.1>.
- Hoy, A., Hänsel, S., Skalak, P., Ustrnul, Z. and Bochniček, O. (2017) The extreme European summer of 2015 in a long-term



- perspective. *International Journal of Climatology*, 943–962. <https://doi.org/10.1002/joc.4751>.
- Ionita, M., Tallaksen, L.M., Kingston, D.G., Stagge, J.H., Laaha, G., Van Lanen, H.A.J., Scholz, P., Chelcea, S.M. and Haslinger, K. (2017) The European 2015 drought from a climatological perspective. *Hydrology and Earth System Sciences*, 21, 1397–1419.
- Jones, P.D. and Hulme, M. (1996) Calculating regional climatic time series for temperature and precipitation: methods and illustrations. *International Journal of Climatology*, 16(4), 361–377. [https://doi.org/10.1002/\(SICI\)1097-0088\(199604\)16:4<361::AID-JOC53>3.0.CO;2-F](https://doi.org/10.1002/(SICI)1097-0088(199604)16:4<361::AID-JOC53>3.0.CO;2-F).
- Kingston, D.G., Stagge, J.H., Tallaksen, L.M. and Hannah, D.M. (2015) European-scale drought: understanding connections between atmospheric circulation and meteorological drought indices. *Journal of Climate*, 28(2), 505–516. <https://doi.org/10.1175/JCLI-D-14-00001.1>.
- Laaha, G., Gauster, T., Tallaksen, L.M., Vidal, J.-P., Stahl, K., Prudhomme, C., Heudorfer, B., Vlnas, R., Ionita, M., Van Lanen, H.A.J., Adler, M.-J., Caillouet, L., Delus, C., Fendekova, M., Gailliez, S., Hannaford, J., Kingston, D., Van Loon, A.F., Mediero, L., Osuch, M., Romanowicz, R., Sauquet, E., Stagge, J.H. and Wong, W.K. (2017) The European~2015 drought from a hydrological perspective. *Hydrology and Earth System Sciences*, 21(6), 3001–3024. <https://doi.org/10.5194/hess-21-3001-2017>.
- Lloyd-Hughes, B. (2014) The impracticality of a universal drought definition. *Theoretical and Applied Climatology*, 117(3–4), 607–611. <https://doi.org/10.1007/s00704-013-1025-7>.
- Lloyd-Hughes, B. and Saunders, M.A. (2002) A drought climatology for Europe. *International Journal of Climatology*, 22(13), 1571–1592. <https://doi.org/10.1002/joc.846>.
- López-Moreno, J.I., Vicente-Serrano, S.M., López-Moreno, J.I. and Vicente-Serrano, S.M. (2008) Positive and negative phases of the wintertime North Atlantic oscillation and drought occurrence over Europe: a multitemporal-scale approach. *Journal of Climate*, 21(6), 1220–1243. <https://doi.org/10.1175/2007JCLI1739.1>.
- Lorenzo-Lacruz, J., Garcia, C. and Morán-Tejeda, E. (2017) Groundwater level responses to precipitation variability in Mediterranean insular aquifers. *Journal of Hydrology*, 552, 516–531. <https://doi.org/10.1016/J.JHYDROL.2017.07.011>.
- Lorenzo-Lacruz, J., Morán-Tejeda, E., Vicente-Serrano, S.M. and López-Moreno, J.I. (2013) Streamflow droughts in the Iberian Peninsula between 1945 and 2005: spatial and temporal patterns. *Hydrology and Earth System Sciences*, 17(1), 119–134. <https://doi.org/10.5194/hess-17-119-2013>.
- Manzano, A., Clemente, M.A., Morata, A., Luna, M.Y., Beguería, S., Vicente-Serrano, S.M. and Martín, M.L. (2019) Analysis of the atmospheric circulation pattern effects over SPEI drought index in Spain. *Atmospheric Research*, 230, 104630. <https://doi.org/10.1016/j.atmosres.2019.104630>.
- Marchant, B.P. and Bloomfield, J.P. (2018) Spatio-temporal modeling of the status of groundwater droughts. *Journal of Hydrology*, 564, 397–413. <https://doi.org/10.1016/j.jhydrol.2018.07.009>.
- Martins, D.S., Raziei, T., Paulo, A.A. and Pereira, L.S. (2012) Spatial and temporal variability of precipitation and drought in Portugal. *Natural Hazards and Earth System Science*, 12, 1493–1501.
- Marvel, K., Cook, B.I., Bonfils, C.J.W., Durack, P.J., Smerdon, J.E. and Williams, A.P. (2019) Twentieth-century hydroclimate changes consistent with human influence. *Nature*, 569, 59–65.
- Mckee TB, Doesken NJ, Kleist J. 1993. The relationship of drought frequency and duration to time scales. Eighth Conference on Applied Climatology, January 1993. Anaheim, California, 17–22.
- Merino, A., López, L., Hermida, L., Sánchez, J.L., García-Ortega, E., Gascón, E. and Fernández-González, S. (2015) Identification of drought phases in a 110-year record from Western Mediterranean basin: trends, anomalies and periodicity analysis for Iberian Peninsula. *Global and Planetary Change*, 133, 96–108.
- Mestre, O., Domonkos, P., Picard, F., Auer, I., Robin, S., Lebarbier, E., Boehm, R., Aguilar, E., Gujjarro, J., Vertachnik, G., Klančar, M., Dubuisson, B. and Stepanek, P. (2013) HOMER: a homogenization software – methods and applications. *Idojaras*, 117.47–67.
- Mihajlović, D. (2006) Monitoring the 2003-2004 meteorological drought over Pannonian part of Croatia. *International Journal of Climatology*, 26, 2213–2225.
- Mitášová, H. and Mitáš, L. (1993) Interpolation by regularized spline with tension: I. Theory and implementation. *Mathematical Geology*, 25(6), 641–655. <https://doi.org/10.1007/BF00893171>.
- Moravec, V., Markonis, Y., Rakovec, O., Kumar, R. and Hanel, M. (2019) A 250-year European drought inventory derived from ensemble hydrologic modeling. *Geophysical Research Letters*, 46, 5909–5917.
- Murphy, C., Harrigan, S., Hall, J. and Wilby, R.L. (2013) Climate-driven trends in mean and high flows from a network of reference stations in Ireland | Tendances induites par le climat dans les séries de débits moyens et élevés à partir d'un réseau de stations de référence en Irlande. *Hydrological Sciences Journal*, 58(4), 755–772. <https://doi.org/10.1080/02626667.2013.782407>.
- Murphy, C., Wilby, R.L., Matthews, T., Horvath, C., Crampsie, A., Ludlow, F., Noone, S., Brannigan, J., Hannaford, J., McLeman, R. and Jobbova, E. (2020) The forgotten drought of 1765–1768: reconstructing and re-evaluating historical droughts in the British and Irish isles. *International Journal of Climatology*. <https://doi.org/10.1002/joc.6521>.
- Murphy, C., Wilby, R.L., Matthews, T.K.R., Thorne, P., Broderick, C., Fealy, R., Hall, J., Harrigan, S., Jones, P., McCarthy, G., MacDonald, N., Noone, S. and Ryan, C. (2019) Multi-century trends to wetter winters and drier summers in the England and Wales precipitation series explained by observational and sampling bias in early records. *International Journal of Climatology*, 40, 610–619. <https://doi.org/10.1002/joc.6208>.
- Nicault, A., Alleaume, S., Brewer, S., Carrer, M., Nola, P. and Guiot, J. (2008) Mediterranean drought fluctuation during the last 500 years based on tree-ring data. *Climate Dynamics*, 31(2–3), 227–245. <https://doi.org/10.1007/s00382-007-0349-3>.
- Noone, S., Broderick, C., Duffy, C., Matthews, T., Wilby, R.L. and Murphy, C. (2017) A 250-year drought catalogue for the Island of Ireland (1765–2015). *International Journal of Climatology*, 37, 239–254. <https://doi.org/10.1002/joc.4999>.
- Noone, S., Murphy, C., Coll, J., Matthews, T., Mullan, D., Wilby, R. L. and Walsh, S. (2016) Homogenization and analysis of an expanded long-term monthly rainfall network for the Island of Ireland (1850–2010). *International Journal of Climatology*, 36(8), 2837–2853. <https://doi.org/10.1002/joc.4522>.

- Parry, S., Hannaford, J., Lloyd-Hughes, B. and Prudhomme, C. (2012) Multi-year droughts in Europe: analysis of development and causes. *Hydrology Research*, 43(5), 689–706. <https://doi.org/10.2166/nh.2012.024>.
- Paulo, A., Martins, D. and Pereira, L.S. (2016) Influence of precipitation changes on the SPI and related drought severity. An analysis using long-term data series. *Water Resources Management*, 30, 5737–5757.
- Peñuelas, J., Sardans, J., Filella, I., Estiarte, M., Llusà, J., Ogaya, R., Carnicer, J., Bartrons, M., Rivas-Ubach, A., Grau, O., Peguero, G., Margalef, O., Pla-Rabés, S., Stefanescu, C., Asensio, D., Preece, C., Liu, L., Verger, A., Rico, L., Barbeta, A., Achotegui-Castells, A., Gargallo-Garriga, A., Sperlich, D., Farré-Armengol, G., Fernández-Martínez, M., Liu, D., Zhang, C., Urbina, I., Camino, M., Vives, M., Nadal-Sala, D., Sabaté, S., Gracia, C. and Terradas, J. (2018) Assessment of the impacts of climate change on Mediterranean terrestrial ecosystems based on data from field experiments and long-term monitored field gradients in Catalonia. *Environmental and Experimental Botany*, 152, 49–59. <https://doi.org/10.1016/j.envexpbot.2017.05.012>.
- Potop, V., Boronean, C., Možný, M., Štěpánek, P. and Skalák, P. (2014) Observed spatiotemporal characteristics of drought on various time scales over The Czech Republic. *Theoretical and Applied Climatology*, 115, 563–581.
- Robinson, E.L., Blyth, E.M., Clark, D.B., Finch, J. and Rudd, A.C. (2017) Trends in atmospheric evaporative demand in Great Britain using high-resolution meteorological data. *Hydrology and Earth System Sciences*, 21(2), 1189–1224. <https://doi.org/10.5194/hess-21-1189-2017>.
- Ryan, C., Duffy, C., Broderick, C., Thorne, P.W., Curley, M., Walsh, S., Daly, C., Treanor, M. and Murphy, C. (2018) Integrating data rescue into the classroom. *Bulletin of the American Meteorological Society*, 99(9), 1757–1764. <https://doi.org/10.1175/BAMS-D-17-0147.1>.
- Samaniego, L., Thober, S., Kumar, R., Wanders, N., Rakovec, O., Pan, M., Zink, M., Sheffield, J., Wood, E.F. and Marx, A. (2018) Anthropogenic warming exacerbates European soil moisture droughts. *Nature Climate Change*, 8(5), 421–426. <https://doi.org/10.1038/s41558-018-0138-5>.
- Santos, J., Corte-Real, J. and Leite, S. (2007) Atmospheric large-scale dynamics during the 2004/2005 winter drought in Portugal. *International Journal of Climatology*, 27, 571–586.
- Santos, J.F., Pulido-Calvo, I. and Portela, M.M. (2010) Spatial and temporal variability of droughts in Portugal. *Water Resources Research*, 46. <https://doi.org/10.1029/2009WR008071>.
- Seneviratne, S.I., Corti, T., Davin, E.L., Hirschi, M., Jaeger, E.B., Lehner, I., Orlowsky, B. and Teuling, A.J. (2010) Investigating soil moisture-climate interactions in a changing climate: a review. *Earth-Science Reviews*, 99(3–4), 125–161. <https://doi.org/10.1016/j.earscirev.2010.02.004>.
- Serrano, A., García, J., Mateos, V.L., Cancillo, M.L. and Garrido, J. (1999) Monthly modes of variation of precipitation over the Iberian Peninsula. *Journal of Climate*, 12(9), 2894–2919. [https://doi.org/10.1175/1520-0442\(1999\)012<2894:MMOVOP>2.0.CO;2](https://doi.org/10.1175/1520-0442(1999)012<2894:MMOVOP>2.0.CO;2).
- Sheffield, J. and Wood, E.F. (2008) Projected changes in drought occurrence under future global warming from multi-model, multi-scenario, IPCC AR4 simulations. *Climate Dynamics*, 31, 79–105.
- Sousa, P.M., Trigo, R.M., Aizpurua, P., Nieto, R., Gimeno, L. and Garcia-Herrera, R. (2011) Trends and extremes of drought indices throughout the 20th century in the Mediterranean. *Natural Hazards and Earth System Science*, 11(1), 33–51. <https://doi.org/10.5194/nhess-11-33-2011>.
- Spinoni, J., Barbosa, P., De Jager, A., McCormick, N., Naumann, G., Vogt, J.V., Magni, D., Masante, D. and Mazzeschi, M. (2019) A new global database of meteorological drought events from 1951 to 2016. *Journal of Hydrology: Regional Studies*, 22, 100593. <https://doi.org/10.1016/J.EJRH.2019.100593>.
- Spinoni, J., Naumann, G., Vogt, J. and Barbosa, P. (2015) European drought climatologies and trends based on a multi-indicator approach. *Global and Planetary Change*, 127, 50–57.
- Spinoni, J., Naumann, G. and Vogt, J.V. (2017) Pan-European seasonal trends and recent changes of drought frequency and severity. *Global and Planetary Change*, 148, 113–130. <https://doi.org/10.1016/j.gloplacha.2016.11.013>.
- Spinoni, J., Vogt, J.V., Naumann, G., Barbosa, P. and Dosio, A. (2018) Will drought events become more frequent and severe in Europe? *International Journal of Climatology*, 38(4), 1718–1736. <https://doi.org/10.1002/joc.5291>.
- Spraggs, G., Peaver, L., Jones, P. and Ede, P. (2015) Re-construction of historic drought in the Anglian region (UK) over the period 1798–2010 and the implications for water resources and drought management. *Journal of Hydrology*, 526, 231–252.
- Stagge, J.H., Kingston, D.G., Tallaksen, L.M. and Hannah, D.M. (2017) Observed drought indices show increasing divergence across Europe. *Scientific Reports*, 7(1), 14045. <https://doi.org/10.1038/s41598-017-14283-2>.
- Stegehuis, A.I., Vautard, R., Ciais, P., Teuling, A.J., Jung, M. and Yiou, P. (2013) Summer temperatures in Europe and land heat fluxes in observation-based data and regional climate model simulations. *Climate Dynamics*, 41(2), 455–477. <https://doi.org/10.1007/s00382-012-1559-x>.
- Tallaksen, L.M., Hisdal, H. and Van Lanen, H. (2009) Space-time modeling of catchment scale drought characteristics. *Journal of Hydrology*, 375, 363–372. <https://doi.org/10.1016/j.jhydrol.2009.06.032>.
- Tallaksen, L.M., Madsen, H. and Clausen, B. (1997) On the definition and modelling of streamflow drought duration and deficit volume. *Hydrological Sciences Journal*, 42(1), 15–33. <https://doi.org/10.1080/02626669709492003>.
- Teuling, A.J., Van Loon, A.F., Seneviratne, S.I., Lehner, I., Aubinet, M., Heinesch, B., Bernhofer, C., Grünwald, T., Prasse, H. and Spank, U. (2013) Evapotranspiration amplifies European summer drought. *Geophysical Research Letters*, 40(10), 2071–2075. <https://doi.org/10.1002/grl.50495>.
- Todd, B., Macdonald, N. and Chiverrell, R.C. (2015) Revision and extension of the composite Carlisle rainfall record, Northwest England: 1757–2012. *International Journal of Climatology*, 35(12), 3593–3607. <https://doi.org/10.1002/joc.4233>.
- Todd, B., Macdonald, N., Chiverrell, R.C., Caminade, C. and Hooke, J. M. (2013) Severity, duration and frequency of drought in SE England from 1697 to 2011. *Climatic Change*, 121, 673–687.
- Trigo, R., Valente, M., Trigo, I., Miranda, P., Ramos, A., Paredes, D. and Garcia-Herrera, R. (2009) The impact of North Atlantic

- wind and cyclone trends on European precipitation and significant wave height in the Atlantic. *Annals of the New York Academy of Sciences*, 1146, 212–234. <https://doi.org/10.1196/annals.1446.014>.
- Trigo, R.M., Añel, J.A., Barriopedro, D., García-Herrera, R., Gimeno, L., Nieto, R., Castillo, R., Allen, M.R. and Massey, N. (2013) The record winter drought of 2011–12 in the Iberian Peninsula. *American Meteorological Society*, 94(9), 41–45.
- van der Schrier, G., Briffa, K.R., Jones, P.D. and Osborn, T.J. (2006) Summer moisture variability across Europe. *Journal of Climate*, 19, 2818–2834.
- Venema, V.K.C., Mestre, O., Aguilar, E., Auer, I., Guijarro, J.A., Domonkos, P., Vertanik, G., Szentimrey, T., Stepanek, P., Zahradnick, P., Viarre, J., Müller-Westermeier, G., Lakatos, M., Williams, C.N., Menne, M.J., Lindau, R., Rasol, D., Rustemeier, E., Kolokythas, K., Marinova, T., Andresen, L., Acquavita, F., Fratianni, S., Cheval, S., Klancar, M., Brunetti, M., Gruber, C., Prohom Duran, M., Likso, T., Esteban, P. and Brandsma, T. (2012) Benchmarking homogenization algorithms for monthly data. *Climate of the Past*, 8(1), 89–115. <https://doi.org/10.5194/cp-8-89-2012>.
- Vicente-Serrano, S.M. (2006a) Spatial and temporal analysis of droughts in the Iberian Peninsula (1910–2000). *Hydrological Sciences Journal*, 51(1), 83–97. <https://doi.org/10.1623/hysj.51.1.83>.
- Vicente-Serrano, S.M. (2006b) Differences in spatial patterns of drought on different time scales: an analysis of the Iberian Peninsula. *Water Resources Management*, 20(1), 37–60. <https://doi.org/10.1007/s11269-006-2974-8>.
- Vicente-Serrano, S.M. (2016) Foreword: drought complexity and assessment under climate change conditions. *Cuadernos de Investigacion Geografica*, 42(1), 7. <https://doi.org/10.18172/cig.2961>.
- Vicente-Serrano, S.M., Azorin-Molina, C., Sanchez-Lorenzo, A., Revuelto, J., López-Moreno, J.I., González-Hidalgo, J.C., Moran-Tejeda, E. and Espejo, F. (2014a) Reference evapotranspiration variability and trends in Spain, 1961–2011. *Global and Planetary Change*, 121, 26–40. <https://doi.org/10.1016/j.gloplacha.2014.06.005>.
- Vicente-Serrano, S.M., García-Herrera, R., Barriopedro, D., Azorin-Molina, C., López-Moreno, J.I., Martín-Hernández, N., Tomás-Burguera, M., Gimeno, L. and Nieto, R. (2016) The westerly index as complementary indicator of the North Atlantic oscillation in explaining drought variability across Europe. *Climate Dynamics*, 47(3–4), 845–863. <https://doi.org/10.1007/s00382-015-2875-8>.
- Vicente-Serrano, S.M., González-Hidalgo, J.C., de Luis, M. and Raventós, J. (2004) Drought patterns in the Mediterranean area: the Valencia region (eastern Spain). *Climate Research*, 26(1), 5–15. <https://doi.org/10.3354/cr026005>.
- Vicente-Serrano, S.M. and López-Moreno, J.I. (2006) The influence of atmospheric circulation at different spatial scales on winter drought variability through a semi-arid climatic gradient in Northeast Spain. *International Journal of Climatology*, 26(11), 1427–1453. <https://doi.org/10.1002/joc.1387>.
- Vicente-Serrano, S.M., Lopez-Moreno, J.-I., Beguería, S., Lorenzo-Lacruz, J., Sanchez-Lorenzo, A., García-Ruiz, J.M., Azorin-Molina, C., Morán-Tejeda, E., Revuelto, J., Trigo, R., Coelho, F. and Espejo, F. (2014b) Evidence of increasing drought severity caused by temperature rise in southern Europe. *Environmental Research Letters*, 9(4), 044001. <https://doi.org/10.1088/1748-9326/9/4/044001>.
- Vicente-Serrano, S.M., Lopez-Moreno, J.-I., Beguería, S., Lorenzo-Lacruz, J., Sanchez-Lorenzo, A., García-Ruiz, J.M., Azorin-Molina, C., Morán-Tejeda, E., Revuelto, J., Trigo, R., Coelho, F. and Espejo, F. (2014c) Evidence of increasing drought severity caused by temperature rise in southern Europe. *Environmental Research Letters*, 9(4), 044001. <https://doi.org/10.1088/1748-9326/9/4/044001>.
- Vicente-Serrano, S.M., McVicar, T., Miralles, D., Yang, Y. and Tomas-Burguera, M. (2020a) Unravelling the Influence of Atmospheric Evaporative Demand on Drought under Climate Dynamics. *Climate Change* in press.11(2), <https://doi.org/10.1002/wcc.632>.
- Vicente-Serrano, S.M., Peña-Gallardo, M., Hannaford, J., Murphy, C., Lorenzo-Lacruz, J., Dominguez-Castro, F., López-Moreno, J., Beguería, S., Noguera, I., Harrigan, S. and Vidal, J.-P. (2019) Climate, irrigation, and land-cover change explain streamflow trends in countries bordering the Northeast Atlantic. *Geophysical Research Letters*, 46, 10821–10833.
- Vicente-Serrano, S.M., Quiring, S., Peña-Gallardo, M., Domínguez-castro, F. and Yuan, S. (2020b) A review of environmental droughts: increased risk under global warming? *Earth Science Reviews*.201 <https://doi.org/10.1016/j.earscirev.2019.102953>.
- Vicente-Serrano, S.M., Zouber, A., Lasanta, T. and Pueyo, Y. (2012) Dryness is accelerating degradation of vulnerable shrublands in semiarid mediterranean environments. *Ecological Monographs*, 82(4), 407–428. <https://doi.org/10.1890/11-2164.1>.
- Vicente-Serrano, S.M.M., Zabalza-Martínez, J., Borràs, G., López-Moreno, J.I., Pla, E., Pascual, D., Savé, R., Biel, C., Funes, I., Azorin-Molina, C., Sanchez-Lorenzo, A., Martín-Hernández, N., Peña-Gallardo, M., Alonso-González, E., Tomas-Burguera, M. and El Kenawy, A. (2017) Extreme hydrological events and the influence of reservoirs in a highly regulated river basin of north-eastern Spain. *Journal of Hydrology: Regional Studies*, 12, 13–32. <https://doi.org/10.1016/j.ejrh.2017.01.004>.
- White, D., Richman, M. and Yarnal, B. (1991) Climate regionalization and rotation of principal components. *International Journal of Climatology*, 11(1), 1–25. <https://doi.org/10.1002/joc.3370110102>.
- Wilhite, D.A. and Pulwarty, R.S. (2017) Drought as hazard: understanding the natural and social context. Wilhite, D. A & Pulwarty, R. S, *In Drought and Water Crises: Integrating Science, Management, and Policy*. Boca Raton: CRC Press, , 3–22.
- WMO. 2012. Standardized Precipitation Index User Guide.
- Yang, Y., Zhang, S., McVicar, T.R., Beck, H.E., Zhang, Y. and Liu, B. (2018) Disconnection between trends of atmospheric drying and continental runoff. *Water Resources Research*, 54(7), 4700–4713. <https://doi.org/10.1029/2018WR022593>.
- Zahradníček, P., Trnka, M., Brázdil, R., Možný, M., Štěpánek, P., Hlavinka, P., Žalud, Z., Malý, A., Semerádová, D., Dobrovolný, P., Dubrovský, M. and Řezníčková, L. (2015) The extreme drought episode of August 2011–May 2012 in The Czech Republic. *International Journal of Climatology*, 35, 3335–3352.
- Zhang, Q., Ficklin, D.L., Manzoni, S., Wang, L., Way, D., Phillips, R.P. and Novick, K.A. (2019) Response of ecosystem intrinsic water use efficiency and gross primary productivity to

rising vapor pressure deficit. *Environmental Research Letters*. 14(7).

### SUPPORTING INFORMATION

Additional supporting information may be found online in the Supporting Information section at the end of this article.

**How to cite this article:** Vicente-Serrano SM, Domínguez-Castro F, Murphy C, *et al.* Long-term variability and trends in meteorological droughts in Western Europe (1851–2018). *Int J Climatol*. 2021;41 (Suppl. 1):E690–E717. <https://doi.org/10.1002/joc.6719>