




Article

Phylogenetics of *Taxus* Using the Internal Transcribed Spacers of Nuclear Ribosomal DNA and Plastid *trnL-F* Regions

Patricia Coughlan ¹, James C. Carolan ², Ingrid L. I. Hook ³, Lisa Kilmartin ^{1,3} and Trevor R. Hodkinson ^{1,*} 

¹ Botany Building, School of Natural Sciences, Trinity College Dublin, the University of Dublin, Dublin D2, Ireland; COUGHLP@tcd.ie (P.C.); lisakilmartin14@gmail.com (L.K.)

² Department of Biology, Maynooth University, Maynooth, Co. Kildare, Ireland; James.Carolan@mu.ie

³ School of Pharmacy and Pharmaceutical Sciences, Trinity College Dublin, the University of Dublin, Dublin D2, Ireland; IHOOK@tcd.ie

* Correspondence: hodkinst@tcd.ie; Tel.: +353-1896-1128

Received: 17 October 2019; Accepted: 26 February 2020; Published: 12 March 2020



Abstract: *Taxus* is a genus of trees and shrubs with high value in horticulture and medicine as a source of the anticancer drug paclitaxel. The taxonomy of the group is complex due to the lack of diagnostic morphological characters and the high degree of similarity among species. *Taxus* has a wide global geographic distribution and some taxonomists recognize only a single species with geographically defined subgroups, whereas others have described several species. To address these differences in taxonomic circumscription, phylogenetic analyses were conducted on DNA sequences using Maximum Likelihood, Bayesian Inference and TCS haplotype networks on single and combined gene regions obtained for the nuclear ribosomal ITS region and the plastid *trnL* intron and *trnL-F* intergenic spacer. Evidence is presented for the sister group status of *Pseudotaxus* to *Taxus* and the inclusion of *Amentotaxus*, *Austrotaxus*, *Cephalotaxus* and *Torreya* within Taxaceae. Results are consistent with the taxonomic recognition of nine species: *T. baccata*, *T. brevifolia*, *T. canadensis*, *T. cuspidata*, *T. floridana*, *T. fuana*, *T. globosa*, *T. sumatrana* and *T. wallichiana*, but evidence is found for less species distinction and considerable reticulation within the *T. baccata*, *T. canadensis* and *T. cuspidata* group. We compare the results to known taxonomy, biogeography, present new leaf anatomical data and discuss the origins of the hybrids *T. ×media* and *T. ×hunnelliana*.

Keywords: biogeography; hybridization; *Taxus*; nrITS; paclitaxel; phylogenetics; taxaceae; taxol; *trnL-F*

1. Introduction

Morphological differences between species of *Taxus* L. are slight and individuals within species have high levels of phenotypic plasticity, their morphology varying considerably with the environment [1]. This often leads to mis-identification and problems with classification using traditional taxonomic methods, which rely solely on morphological characters. Indeed, the delimitation of species in *Taxus* has been a long-standing taxonomic problem. Pilger [2] and Elwes and Henry [3] classified *Taxus* as monotypic with several geographical subspecies, a view supported by Dempsey and Hook [4] who provided evidence based on needle morphological variation and chemical characteristics. Furthermore, Dempsey [5] conducted a morphological and phytochemical analysis to investigate intra- and inter-generic relationships of *Taxus* and related genera, and concluded that few characters could be used to distinguish among *Taxus* species, but found that a clear distinction between the sister taxa *Cephalotaxus* and *Torreya* could be resolved.

Contrary to this monotypic view of *Taxus*, numerous authors have recognized multiple species including Pilger [2], Cope [6], and Farjon [7] who resolved 7–12 species, while Spjut [8] recognized 24 species and 55 varieties. Currently nine species are listed in the Plant List [9] namely *T. baccata* L. (Europe, Canada), *T. brevifolia* Nutt. (Western North America), *T. canadensis* Marshall (eastern Canada, USA), *T. cuspidata* Siebold and Zucc. (Japan), *T. floridana* Nutt. ex Chapm. (Florida, south United States), *T. fuana* Nan Li & R.R. Mill, *T. globosa* Schltdl (Mexico), *T. sumatrana* (Miq.) de Laub. (China) and *T. wallichiana* Zucc. (Eastern India) (Figure 1).

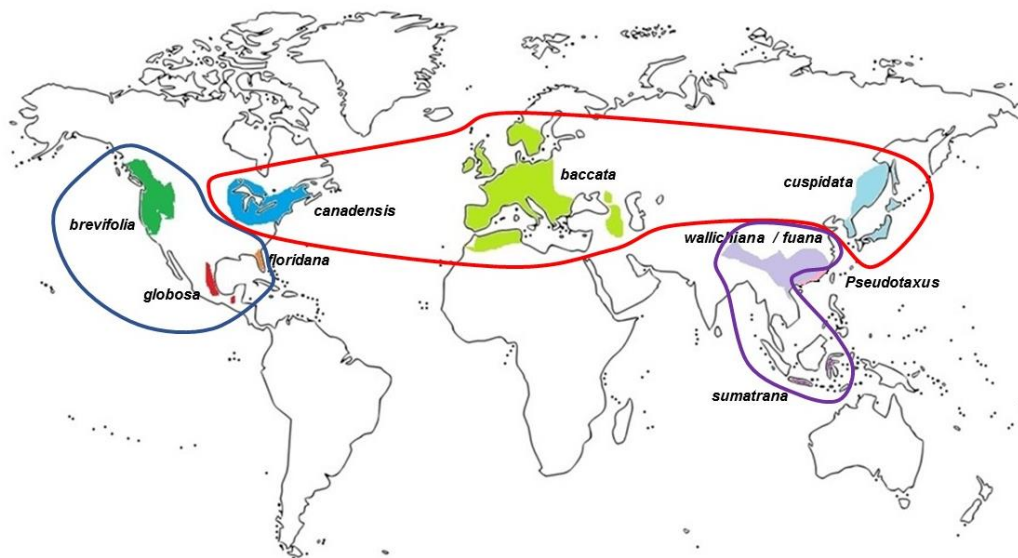


Figure 1. Distribution of *Taxus* species and its sister genus *Pseudotaxus*. Adapted and modified from Li et al. [10]. Groupings of ITS sequences in relation to the biogeography of *Taxus* are also shown. Blue, red and purple ellipses represent phylogenetic groupings from the TCS network analysis (Figure 4).

The importance of species delimitation and classification of *Taxus* goes beyond taxonomy, taxonomic identification for horticulture and comparative biology. The genus comprises members that synthesize the anti-cancer taxane drug paclitaxel (Taxol) and incorrect species identification can hinder cultivation and drug production efforts [4,11]. All *Taxus* species in this study produce paclitaxel in varying amounts [4,11]. Phytochemical studies, examining plants collected from different regions of the world, require a stable nomenclature and species identification. Furthermore, an accurate phylogenetic reconstruction is required to infer how paclitaxel may have evolved and synthesized, which may have biotechnological implications.

Accurate species identification is also required for conservation of *Taxus* species and forests [12]. According to the International Union for Conservation of Nature (ICUN) Red List, several species of *Taxus* are threatened to different degrees [13–18]. *Taxus brevifolia* and *Taxus mairei* (= *T. wallichiana* var. *mairei* (Lemée and H.Lév.) L.K.Fu and Nan Li) are classified as Near Threatened, and Vulnerable, respectively, with their numbers currently decreasing. A major part of this decline is attributed to logging [17] and the harvesting of bark for paclitaxel production, although this exploitation has largely stopped, following the development of a semi synthetic process to produce paclitaxel from *T. baccata*. *Taxus wallichiana*, *Taxus globosa*, *Taxus chinensis* (= *T. wallichiana* var. *chinensis* (Pilg.) Florin), *Taxus fauna* and *Taxus contorta* Griff. (= *T. wallichiana* ssp. *contorta* (Griff.) Silba) are all classified as Endangered [13,15,16,19]. This is due to the over exploitation of *T. wallichiana* and *T. chinensis* for paclitaxel production. Deforestation has caused populations of *Taxus globosa* to decline; *T. globosa* is not yet exploited for paclitaxel production. *Taxus fuana* according to the Red List has become endangered due to over exploitation associated with medical use along with over-collection for fuel and fodder. Shah et al. [20] observed that the populations of *T. fuana* were declining, mainly due to human pressure

from habitat destruction, deforestation and over-exploitation for fuel, fodder, timber and farming. The most endangered species is *Taxus floridana*, which is listed as Critically Endangered [14].

Molecular phylogenetic approaches offer the potential to better understand and resolve the relationships within taxonomically difficult groups including *Taxus* and a number of studies exist that provide insight into the evolution of the genus and its relatives. Chaw et al. [21] and Cheng et al. [22] used DNA sequences of 18S ribosomal DNA, internal transcribed spacer regions of nuclear ribosomal DNA and *matK* plastid DNA to clarify the phylogenetic position of Taxaceae in the gymnosperm order Taxales. There is also evidence for the monophyly of *Taxus* [21,23], but the relationships of its species remain understudied and not fully resolved [10,21–23]. Extant yews are believed to have evolved from a group that includes the fossil, *Paleotaxus redivia* [24]. Triassic *P. redivia* existed over 200 million years ago and is believed to be the oldest yew according to fossil records [24]. A mid-Jurassic relative (140 myr old) is said to be more recognizable as a member of *Taxus*, and hence, named *T. jurassica* [25]. A Quaternary fossil yew, *T. grandis*, is probably a synonym of *T. baccata* [26].

Some other work has examined hybridization in the genus. Collins et al. [1] examined species distinction of *Taxus baccata*, *T. canadensis*, and *T. cuspidata* using Randomly Amplified Polymorphic DNA fingerprinting (RAPD) and DNA sequences and undertook an analysis of their reputed hybrids. They reported polymorphism in the plastid *trnL-F* region that could be used for species identification in combination with RAPD and found three different plastid DNA haplotypes [1]. They confirmed the hybrid origin and parentage of the *Taxus* hybrids (*T. cuspidata* × *T. canadensis* = *T. ×hunnewelliana* and *T. baccata* × *T. cuspidata* = *T. ×media*) using RAPD fingerprinting.

The aim of this study was to examine the phylogenetic relationships within *Taxus* by comparing nucleotide sequences obtained from the internally transcribed spacer region (ITS) of 18S-26S nuclear ribosomal DNA and the *trnL* intron and the *trnF* intergenic spacer region of plastid DNA (*trnL-F*). These regions have been used extensively in systematic studies of other groups of plants for investigating relationships at different taxonomic levels [27–33] and have also been applied to limited samples of *Taxus*. Representatives of *Austrotaxus*, *Amentotaxus*, *Cephalotaxus*, *Pseudotaxus*, and *Torreya* were also included to assess inter-relationships in Taxaceae and related families (Cephalotaxaceae and Amentotaxaceae). *Cephalotaxus* was sister to *Taxus* in Cheng et al. [22] and Hao et al. [33] and Taxaceae comprises *Amentotaxus*, *Taxus* and *Torreya* [7]. *Cephalotaxus* is sometimes included in Taxaceae [34]. *Podocarpus* belongs to Podocarpaceae [35]. A large-scale phylogenetic analysis of the group, including all currently accepted *Taxus* species according to the Plant List [9], was conducted and we also examined evidence for evolutionary reticulation using network analyses and conducted a detailed assessment of the putative hybrid taxa, *T. ×media* and *T. ×hunnewelliana*.

2. Materials and Methods

2.1. Specimens

Fresh plant material was obtained from the National Botanic Garden, Glasnevin, Ireland. DNA samples were also available from the Trinity College Dublin (TCD) DNA Bank. Voucher specimens were kept for each sample, dried and stored in the TCD Herbarium. Some ground and dried leaf samples were also available from our previous work on the genus (Table 1).

Table 1. Samples newly sequenced for *nrITS* and *trnL* intron and *trnL-F* intergenic spacer or used in the morphological assessments.

Name	Sample No.	Voucher or Living Specimen	GenBank Code <i>ITS; trnL + trnL-F</i> ⁺
<i>Amentotaxus formosana</i>	L66	Edinburgh 19763745	MK748450
<i>Austrotaxus spicata</i>	L164	Edinburgh CAGNC*69	MK748455
<i>Cephalotaxus harringtonia</i>	P8	XX.006542 Glasnevin Coughlan P8	MK116531 ; MK731931
<i>Cephalotaxus oliveri</i>	L75	Edinburgh 951689	–
<i>Cephalotaxus sinensis</i>	L68	Edinburgh 19081025	–
<i>Podocarpus macrophyllus</i>	P26	2005.0135 Glasnevin Coughlan P26	MK731953
<i>Podocarpus salignus</i>	P23	XX.007572 Glasnevin Coughlan P23	MK731946
<i>Taxus 'Aurea'</i>	P13	XX.006570 Glasnevin Coughlan P13	MK731936
<i>T. baccata</i>	L10	Ranelagh Park, Dublin	MK783697
<i>T. baccata</i>	L51	Bedgebury 13/025	MK783706
<i>T. baccata</i>	L93	Cornalack Lough Derg <i>s.n.</i>	MK748451
<i>T. baccata</i>	L95	Clorhane <i>s.n.</i>	MK748453
<i>T. baccata</i>	T1	Physic garden, TCD, <i>s.n.</i>	–
<i>T. baccata</i>	L94	Cornalack lough Derg <i>s.n.</i>	MK748452
<i>T. baccata</i> 'Fastigiata'	P28	13638 Glasnevin Coughlan P28	MK211157 ; MK731950
<i>T. baccata</i> 'Fructo Luteo'	L112	Mount Usher <i>s.n.</i>	–
<i>T. baccata</i> 'Amersfort'	L108	Mount Usher <i>s.n.</i>	–
<i>T. baccata</i> 'Fastigiata'	P30	Glasnevin Cemetery Coughlan P30	MK731952
<i>T. baccata</i> 'Fastigiata'	L42	Bedgebury 13/108	MK783704
<i>T. baccata</i> 'Fastigiata'	L106	Florence Court <i>s.n.</i>	–
<i>T. baccata</i> 'Grandis'	P29	Glasnevin Coughlan P29	MK731951
<i>T. baccata</i> 'Rushmoor'	L44	Bedgebury 15/0287	MK783705
<i>T. baccata f. aurea</i>	P27	XX.006574 Glasnevin Coughlan P27	MK211154 , MK211155 , MK211156 ; MK731949
<i>T. brevifolia</i>	P14	1885.006579 Glasnevin Coughlan P14	MK123470 ; MK731937
<i>T. brevifolia</i>	L31	Glasnevin 1885.006579	MK783701
<i>T. brevifolia</i>	L149	JFK Arboretum, New Ross 33	MK748454
<i>T. canadensis</i>	P5	JFK Hook <i>s.n.</i>	MK116529 ; MK731929
<i>T. canadensis</i>	P6	Canada Hook <i>s.n.</i>	MK116530 ; MK731930
<i>T. canadensis</i>	P11	XX.006556 Glasnevin Coughlan P11	MK168613 , MK168614 , MK168615 ; MK731934
<i>T. canadensis</i>	P21	XX.005502 Glasnevin Coughlan P21	Mk211148 , MK211149 , MK211150 ; MK731944
<i>T. canadensis</i>	L24	Bedgebury 14/94	MK272737 ; MK748448
<i>T. canadensis</i>	L33	Glasnevin XX.006556	MK272738 ; MK748449
<i>T. canadensis</i>	L145	JFK Arboretum, New Ross 8.M.5	–
<i>T. canadensis</i>	L165	Wendall Massachusetts <i>s.n.</i>	–
<i>T. canadensis</i>	TH1	Quebec, Canada	MK685277
<i>T. canadensis</i>	TH2	Quebec, Canada	MK685278
<i>T. canadensis</i> 'Aurea'	P2	Glasnevin Hook <i>s.n.</i>	MK123469 ; MK731928
<i>T. canadensis</i> 'Aurea'	P10	XX.006549 Glasnevin Coughlan P10	MK168610 , MK168611 , MK168612 ; MK731933
<i>T. canadensis</i> 'Aurea'	P20	XX.006609 Glasnevin Coughlan P20	MK731943
<i>T. canadensis</i> 'Aurea'	L36	Glasnevin XX.006549	MK272740 ; MK783703
<i>T. cuspidata</i>	L27	Bedgebury 13/136	MK783700
<i>T. cuspidata</i>	P3	JFK Hook <i>s.n.</i>	Mk116528 ;
<i>T. cuspidata</i>	P15	XX.006597 Glasnevin Coughlan P15	MK123471 ; MK731938
<i>T. cuspidata</i>	P17	1911.006591 Glasnevin Coughlan P17	MK123473 ; MK731940
<i>T. cuspidata</i>	P19	XX.006601 Glasnevin Coughlan P19	MK168784 , MK168785 , MK168786 ; MK731942
<i>T. cuspidata</i> 'Fructo luteo'	L32	Glasnevin 12/30 Kew	MK783702
<i>T. cuspidata f. thayerae</i>	P9	1952.006540 Glasnevin Coughlan P9	MK168608 , MK168609 ; MK731932
<i>T. cuspidata f. thayerae</i>	P18	1952.006593 Glasnevin Coughlan P18	MK168781 , MK168782 , MK168783 ; MK731941
<i>T. cuspidata</i> var. <i>luteobaccata</i>	P12	1930.006571 Glasnevin Coughlan P12	MK168616 , MK168617 , MK168618 ; MK731935
<i>T. floridana</i>	L162	Smith College Arboretum PULOG 7	MK748456
<i>T. xmedia</i> 'Hatfieldii'	L40	Bedgebury 13/280	–
<i>Taxus canadensis</i>	P1	Glasnevin Hook <i>s.n.</i>	MK116527 ; MK731927
<i>Taxus xhunnwelliana</i>	L25	Bedgebury 13/125	MK783698
<i>Taxus xmedia</i> 'Cuftoni'	P22	XX.007572 Glasnevin Coughlan P22	MK211151 ; MK731945
<i>Taxus xmedia</i> 'Hicksii'	P16	XX.006589 Glasnevin Coughlan P16	MK123472 ; MK731939
<i>Taxus xmedia</i> 'Hicksii'	L26	Bedgebury 13/006	MK783699
<i>Torreya californica</i>	P24	7746 Glasnevin Coughlan P24	MK211152 ; MK731947
<i>Torreya jackii</i>	L73	Edinburgh 19970112	–
<i>Torreya nucifera</i>	L34	Glasnevin 7734	MK272739
Unlabelled <i>Torreya sp.</i>	P25	XX.007599 Glasnevin Coughlan P25	MK211153 ; MK731948

Glasnevin = National Botanic Gardens, Glasnevin, Dublin 9, Ireland; Edinburgh = Royal Botanic Gardens, Edinburgh, Scotland; JFK = John F. Kennedy Arboretum, New Ross, Co. Wexford, Ireland; Bedgebury = Bedgebury National Pinetum and Forest, Bedgebury, Kent, England; _ Not submitted to GenBank because of missing data in some of the trace files; Bolded NCBI accession numbers = *ITS*; Non-bolded NCBI accession numbers = *trnL + trnL-F*; + Other sequenced used in study from GenBank are listed in supplementary Table S1a,b.

2.2. DNA Extraction and Sequencing

DNA was extracted from 0.05–0.075 g ground leaf material or 0.075–0.1 g of fresh material using a modified hot CTAB method of Doyle and Doyle [36–38]. DNA was precipitated using 100% isopropanol, pelleted and washed with 70% ethanol and purified using the JETquick Spin Columns (GENOMED GmbH, Lohne, Germany) following the manufacturer's instructions. DNA was then stored in TE buffer (10 mM Tris/HCL, 1 mM EDTA, pH 8.0) at -80°C until required.

The forward and reverse primers of Sun, Skinner [28] were used for amplification and sequencing of the *ITS* region. The internal primer 5.8 of Liston et al. [39] was also used as a sequencing primer because of the long length of the amplicons. The *trnL* intron and the *trnF* spacer (hereafter the *trnL-F* region) were amplified and sequenced as one segment using primers "c" and "f" of Taberlet et al. [27] and internal *trnL-F* primers "e" and "d" when necessary. PCRs for both regions were carried out in 12.5 μL reactions using BIOLINE Biomix (Bioline Reagents, London, UK). Both, the *trnL-F* and *ITS* PCR amplifications were prepared using 4.95 μL ultrapure water, 6.25 μL Biomix, 0.5 μL (10 pmol) forward and reverse primers and 0.3 μL of column cleaned total DNA (ca. 100 $\text{ng}\mu\text{L}^{-1}$). The reaction conditions for *trnL-F* were as follows: denaturation at 95°C for 1 min 30 s followed by 30 cycles of 45 s at 95°C , 45 s at 50°C , 2 min at 72°C and a final extension at 72°C for 7 min in an Applied Biosystems Verti 96 well thermal cycler. 3 μL PCR products were run on a 1.2% agarose gel to check for amplification. Successfully amplified DNA fragments were purified using the ExoSap method. 0.3 μL of exonuclease (New England Biolabs, MA, USA; 20 U/ μL), 2 μL of shrimp alkaline phosphatase (New England Biolabs; 1 U/ μL) and 7 μL of sterile ultrapure water was added to 5 μL of PCR product and incubated at 37°C for 30 min followed by 82°C for 20 min. Purified PCR products were then sequenced using BigDye Terminator (Applied Biosystems, CA, USA) cycle sequencing and an Applied Biosystems 3130 xl Genetic sequencer according to the manufacturers protocol with the same primers used for initial amplification.

Some samples of both putative hybrids and non-hybrids required cloning due to the heterogeneity of the PCR product. Cloning was performed using a Thermo Scientific CloneJET PCR cloning kit (Fermentas, Vilnius, Lithuania). The PCR product was inserted into the pJET1.2/blunt cloning vector that was then transformed into *E. coli* cells. The cells were incubated and grown overnight at 37°C . Eight single colonies were chosen randomly from the agar plate and a PCR was performed on each colony using the same primers as the initial pre-cloning amplification. A small part of the colony was picked directly from the agar and placed directly in the reaction using a sterile pipette tip. The parameters for the PCR were the same as above with the exception that there was an additional 10 min pre-melt at 94°C and 10 min final extension at 72°C . The cloned PCR products were purified using JETquick spin columns and sequenced as described above.

2.3. Sequence Analysis and Phylogenetic Reconstruction

To obtain a contiguous sequence for the target DNA region, forward and reverse sequence reads were assembled in Geneious Pro 11.1.4. (Biomatters Ltd., Auckland, NZ). The sequences were aligned in Geneious using highest sensitivity, either MUSCLE or Geneious algorithms with default settings. The sequences were then manually aligned if necessary. The aligned matrix was imported into MEGA 7 [40] for Maximum Likelihood (ML) phylogenetic analyses [40] and also MrBayes [41] for Bayesian Inference (BI) phylogenetic tree reconstruction.

For the ML analyses, the best fit substitution model was determined by the Model Selection function in MEGA 7 [40] and was found to be the Tamura 3-parameter model (T92) with gamma distributed rate heterogeneity and estimated proportion of invariant sites (G+I) for both the *ITS* and the *trnL-F* gene regions (and for the combined analyses). ML was performed in MEGA 7 with 1000 replicates of random sequence addition and nearest neighbor interchange (NNI) branch swapping. Initial tree(s) for the heuristic search were obtained automatically by applying Neighbor-Joining and BioNJ algorithms to a matrix of pairwise distances estimated using the Maximum Composite Likelihood

(MCL) approach, and then selecting the topology with superior log likelihood value. Bootstrap support (BS) was calculated from 1000 replicates with the same settings as the initial search following [42].

Bayesian Inference of phylogeny was performed using MrBayes version 3.2.6 [41] for each gene region separately and also the combined matrix of all DNA sequences. The T92+G +I best-fit nucleotide substitution model was used as determined for the ML analyses above. Four parallel Markov chain Monte Carlo (MCMC) chains were run for 25,000,000 generations with trees sampled every 1000 generations, and 25% of trees were discarded as burn-in.

Haplotype networks were constructed using PopArt v1.7 [43] for each gene region separately (ITS and combined *trnL* + *trnL-F*). Sequences were coded according to taxon name (trait) and haplotype networks constructed using TCS (Templeton, Clement, Sing) of Clement et al. [44] in PopArt v1.7.

2.4. Leaf Impressions

To help with the taxonomic identification of samples, leaf impressions were taken from a selection of samples in the field to visualize the rows of stomata, according to the method of Sarvella et al. [45]. Clear nail varnish and Sellotape was used to create an impression of the abaxial side of the leaf on a slide. The leaf impressions were examined and photographed under a stereomicroscope Leica DM500 at 10× and 20× magnification.

3. Results

The aligned *trnL* intron +*trnL-F* intergenic spacer matrix had 132 sequences and, with unalignable regions removed, was 486 bp long. Phylogenetic analyses using BI and ML (Figure 2; Supplementary Figures S1 and S2) were largely congruent. A summary maximum likelihood tree including all samples and all genera of Taxaceae is, therefore, shown in Figure 2 with additional posterior probability (PP) values from the Bayesian analysis. It clearly supports the monophyly of the Taxaceae genera (*Amentotaxus* PP = 1.0/BS = 98; *Austrotaxus* PP = 1.0/BS = 100; *Cephalotaxus* PP = 1.0/BS = 98; *Pseudotaxus* PP = 1.0/BS = 98; *Taxus* PP = 1.0/BS = 96 and *Torreya* PP = 1.0/BS = 90). The sister status of *Pseudotaxus* to *Taxus* is strongly supported when the tree is mid-point rooted or rooted on any of the remaining genera. Despite the high support for the monophyly of genera, the relationships among genera are not well-supported, especially *Austrotaxus*, *Amentotaxus*, *Cephalotaxus* and *Torreya*. Phylogenetic analysis of a reduced *trnL* + *trnL-F* dataset, including only *Taxus* and *Pseudotaxus* was undertaken to examine infrageneric patterns in *Taxus* (Supplementary Figure S3). Some species groupings are evident within *Taxus* but these are not strongly supported.

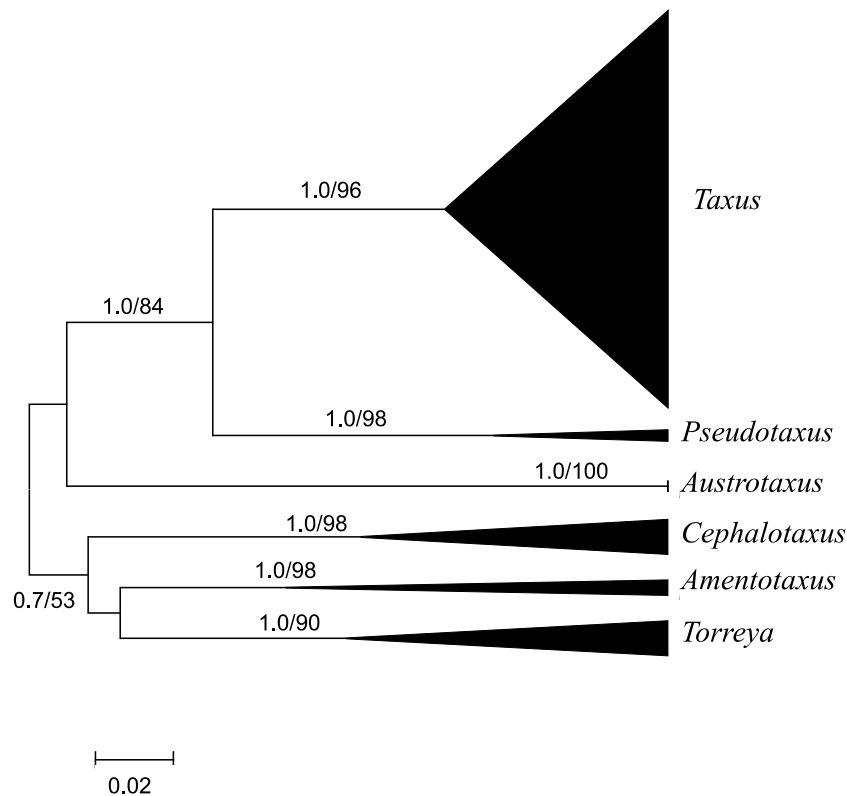


Figure 2. Mid-point rooted maximum likelihood phylogenetic reconstruction of Taxaceae based on *trnL* and *trnL-F* plastid DNA. Scale is genetic distance. Bayesian inference posterior probabilities shown before slash and maximum likelihood bootstrap (BS) values after the slash. 132 sequences were included so the terminal branches were too small to read individually and were condensed to triangles, but the full trees are available in Supplementary Figures S1 and S2.

In contrast, the phylogenetic analyses with *nrITS* provide well-resolved and better-supported trees (Supplementary Figures S4 and S5). The *ITS* matrix with 119 species was 1150 bp long with 333 segregating sites. A combined analysis was therefore undertaken with the combined *ITS*, *trnL* intron and *trnL-F* sequences using both ML and BI (86 sequences, matrix 1511 bp long and 361 segregating sites). The BI tree is shown in Figure 3 with the bootstrap values from the ML analysis given below the branches and BI posterior probabilities above the branches. The combined tree shows that *Taxus brevifolia* is sister to *T. globosa* and *T. floridana* (BS = 86; PP = 1). *Taxus fuana* groups with *T. contorta* (= *T. wallichiana* ssp. *contorta*) (BS = 99; PP = 1). *Taxus wallichiana* is resolved as monophyletic, but its varieties *T. wallichiana* var. *mairei*, var. *chinensis* and var. *wallichiana* are not monophyletic, although, individuals within variety do generally group together and there is not firm support from PP or BS for the lack of monophyly for these varieties. The relationships of *T. baccata*, *T. canadensis*, *T. cuspidata* are not well resolved and there is no evidence for their monophyly.

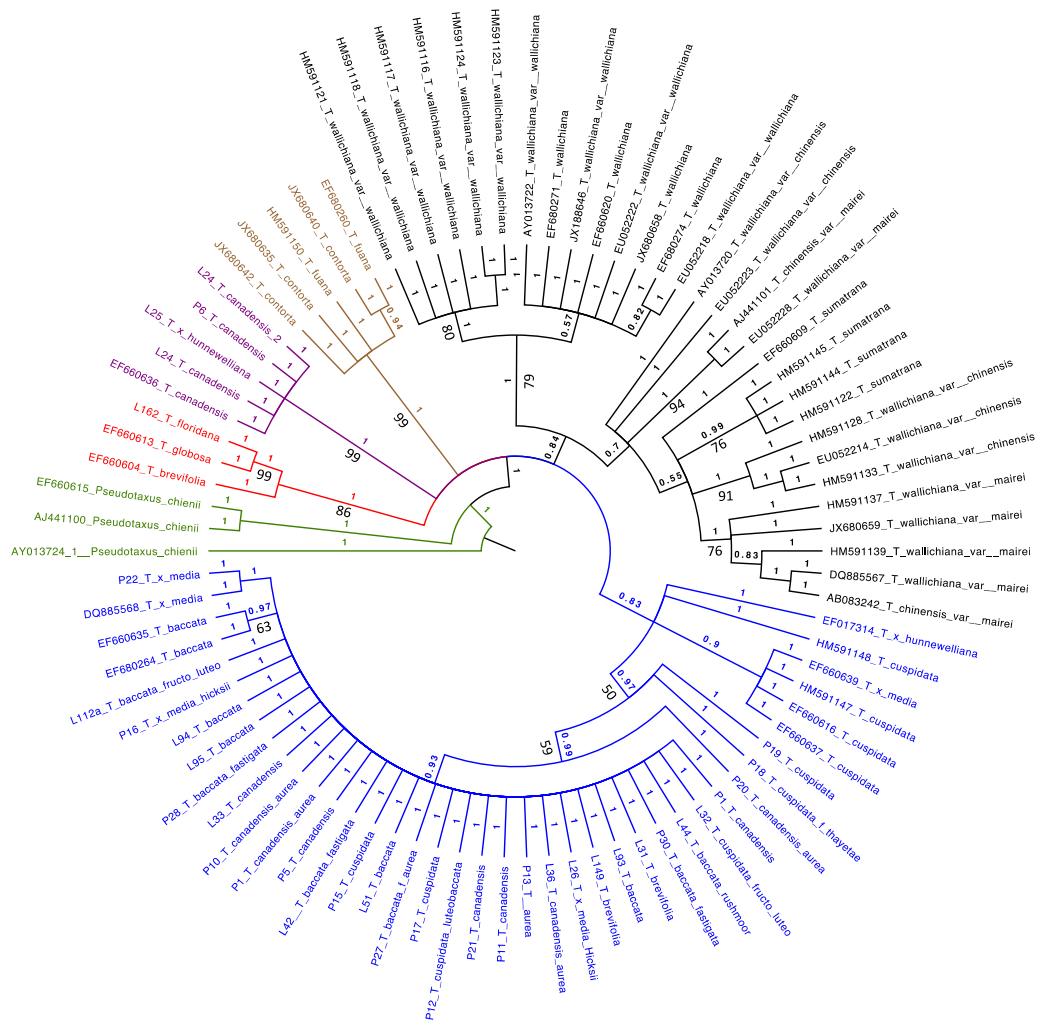


Figure 3. Bayesian inference tree of combined *Taxus nrITS* and plastid *trnL* and *trnL-F* sequences. Posterior probability values shown above the branches and maximum likelihood bootstrap analysis support the values shown below the branches. The relationship between *T. baccata*, *T. canadensis* and *T. cuspidata* are not well resolved. *T. brevifolia* is sister to *T. globosa* and *T. floriadana*. *Taxus fauna* groups with *T. contorta*. *Taxus wallichiana* is monophyletic and its varieties generally group together.

The TCS networks for both *ITS* (Figure 4) and *trnL* + *trnL-F* (Supplementary Figure S6) support the BI and ML analyses of these genes, and again show the non-distinction of *T. baccata*, *T. canadensis*, *T. cuspidata*. Other network building methods Minimum spanning network and Median joining network [44,46,47] analyses showed the same patterns (data not shown). The networks support the clear separation of *T. wallichiana*, on one side of the network, and an unresolved group of *T. baccata*, *T. canadensis* and *T. cuspidata*, on the other side. The other species are positioned between these groups. The *ITS* sequence haplotypes (numbers in Figure 4) are largely species specific except haplotype 1, 2, 11. Haplotype 2 includes *T. floriadana* and *T. globosa*, haplotype 11 includes *T. cuspidata* and *T. xmedia* and haplotype 1 is the most common sequence type including representatives from *T. baccata*, *T. canadensis* and *T. cuspidata*.

Sequence heterogeneity was detected in the uncloned *ITS* PCR products/sequences of *T. xmedia* and *T. xhunnewelliana*. Polymorphisms were detected at several sites and these can be mapped to the corresponding bases in their parental sequences (Figure 5). For example, *T. xmedia* has both a C and a G at position 142. This polymorphism is explained by the presence of the C in one putative parent (*T. cuspidata*) and G in the other parent (*T. baccata*). Similar polymorphisms can be seen for *T. xhunnewelliana*.

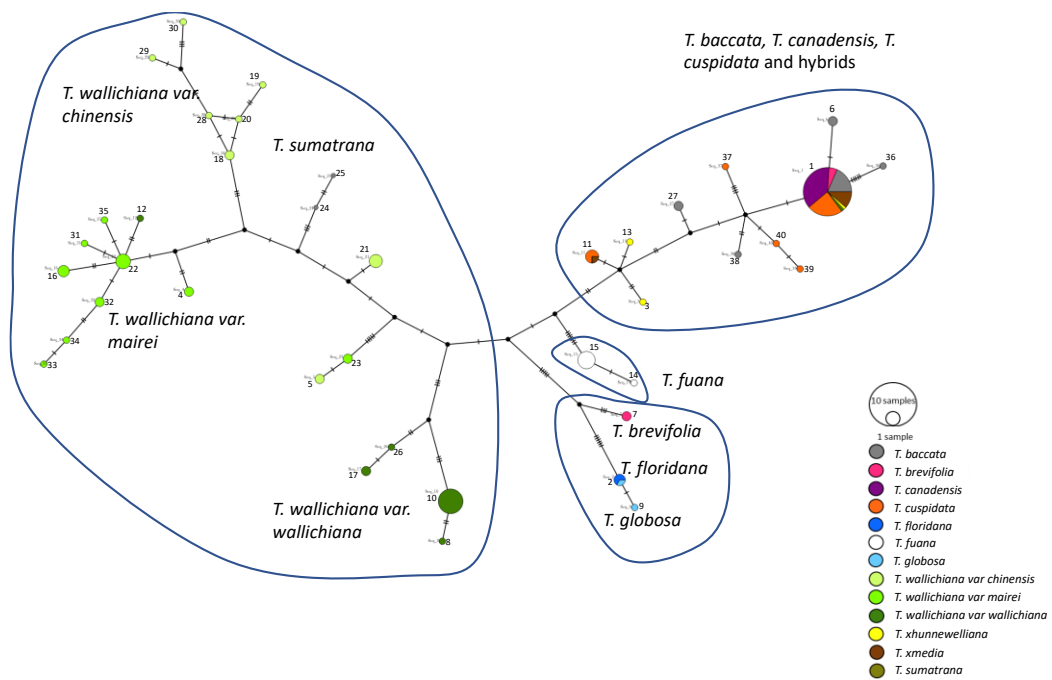


Figure 4. TCS network for ITS sequences. Network shows non-distinction of *T. baccata*, *T. canadensis* and *T. cuspidata*, whilst there is clear separation of *T. wallichiana*, *T. fuana*, and the *T. floridana* and *T. globosa* group. Pie seq. numbers represent haplotype codes.

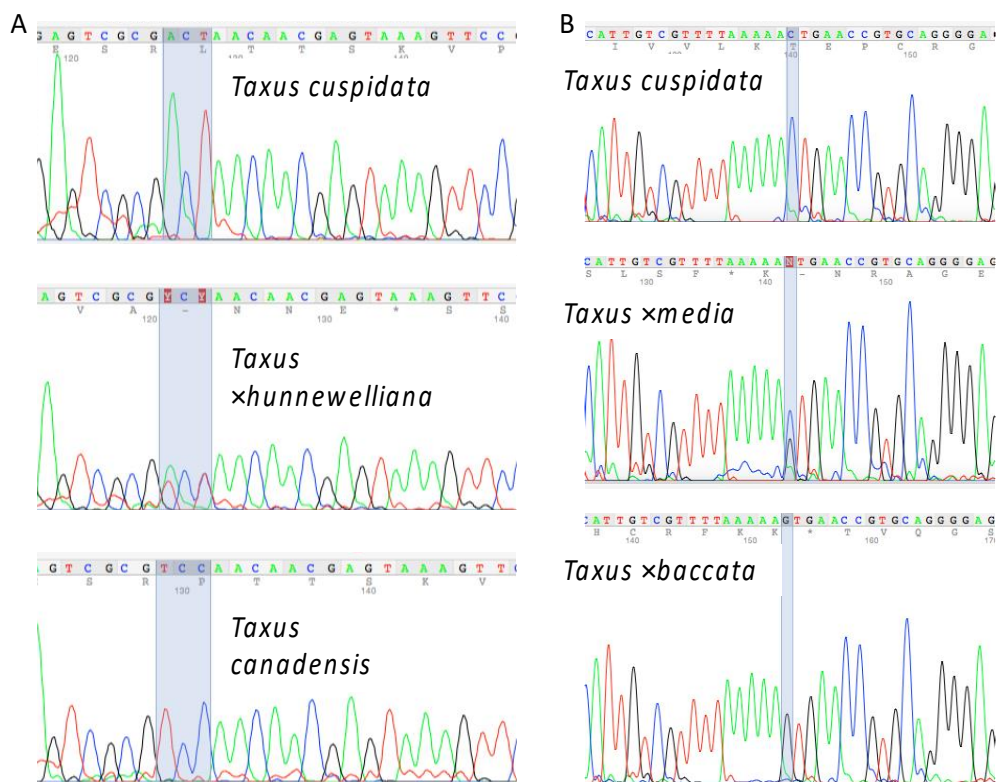


Figure 5. Sequence heterogeneity in *T. xhunnewelliana* (A) and *T. xmedia* (B) and corresponding sequences in their putative parental species. *Taxus xhunnewelliana* = *T. cuspidata* × *T. canadensis*; *Taxus xmedia* = *T. cuspidata* × *T. baccata*.

Leaf anatomical characters were also recorded to assess their utility in species differentiation. The results were inconclusive (Supplementary Table S2) as Farjon and Spjut's keys lead to different results. For example, sample P14 which is labelled as *T. brevifolia* was keyed in situ to *T. cuspidata*, using Farjon [35]. However, using Spjut's key and the stomata impressions it was keyed to *T. recurvata*, which according to The Plant List [9] is a synonym of *T. baccata*.

4. Discussion

4.1. Taxaceae Phylogeny

Our results show support for the recognition of six genera, *Amentotaxus*, *Austrotaxus*, *Cephalotaxus*, *Pseudotaxus*, *Taxus* and *Torreya* in Taxaceae, as each of the genera are clearly resolved as monophyletic (Figure 2). This finding supports the taxonomic treatment of Christenhusz et al. [48] who combined Cephalotaxaceae and Amentotaxaceae with Taxaceae to include 28 species in the same six genera. It is also consistent with the phylogenetic study of Price [49], based on *rbcL* and *matK* that showed Taxaceae to be monophyletic when *Cephalotaxus* and *Amentotaxus* are included. Other authors have chosen to separate these genera into three families. For example, Hao et al. [33] used a phylogenetic analysis of the sequences of five chloroplast (*matK*, *rbcL*, *trnL*, *trnL-trnF* spacer) and one nuclear molecular marker region (*ITS*), both individually and in combination, to support the division of the species into three allied families, Taxaceae, Cephalotaxaceae and Amentotaxaceae.

Pseudotaxus and *Taxus* are closely related sister genera with their only known morphological distinction being the difference in colour in the stomatal bands and aril. *Pseudotaxus* has white arils [50] and is native to south eastern China (north Fujian, north Guangdong, Guangxi, Huan, Jiangxi and Zhejiang) [51–53]. The sister status of *Pseudotaxus* to *Taxus* is also strongly supported in this study but there is not enough support for the formulation of an infra-generic classification of Taxaceae. Elpe et al. [54] conducted a phylogenetic study, which fully supported *Cephalotaxus* as a sister group to Taxaceae. Within Taxaceae, two tribes are supported as monophyletic, Taxeae and Torreyae. Taxeae consists of *Austrotaxus*, *Pseudotaxus* and *Taxus*, while Torreyae is comprised of *Amentotaxus* and *Torreya*. Ghimire and Heo [55] adopting a cladistic approach to investigating the Taxaceae, which also found that *Pseudotaxus* is a sister of *Taxus* with high bootstrap support.

4.2. Taxus Phylogeny

The phylogenetic and network analyses reported here were based on the nuclear ribosomal *ITS* and plastid *trnL* + *trnL-F* regions, which have been used in the past to investigate the phylogenetics of the genus but with lower sampling. Li et al. [10] used sequences of the plastid *trnL-F* regions to show genetic diversity among some *Taxus* species. However, their sampling was limited to one *Pseudotaxus chienii* sample and 14 *Taxus* samples (*T. baccata*, *T. brevifolia*, two *T. canadensis*, *T. chinensis*, *T. chinensis* var. *mairei*, two *T. cuspidata*, *T. globosa*, *T. xhunnewelliana*, *T. xmedia*, *T. wallichiana*). Furthermore, Shah et al. [56] used sequences of *ITS* and *trnL-F* along with principal component analysis to determine the taxonomic and geographical boundaries between *Taxus* species, but they only included *T. baccata*, *T. wallichiana* and *T. fuana*. Although, considerable plastid variation has been recorded within, and among species, in other groups of plants [57,58], we found that the plastid *trnL-F* region provided little molecular variation for species differentiation.

The phylogenetic analyses with nr*ITS* and combined analyses with plastid DNA reported here provide most resolution and support for groupings (Figures 3 and 4; Supplementary Figures S4 and S5) and indicates that *Taxus brevifolia* groups with *T. globosa* and *T. floridana* and that *Taxus fuana* groups with *T. contorta* (= *T. wallichiana* ssp. *contorta*). *Taxus wallichiana* is resolved as monophyletic but its varieties *T. wallichiana* var. *mairei*, var. *chinensis* and var. *wallichiana* are not monophyletic, although individuals within variety do generally group together. *Taxus baccata*, *T. canadensis*, and *T. cuspidata* are closely related but are not well resolved. There is little evidence for their monophyly, except for one group of *T. canadensis* (in the *ITS* tree). The networks support the clear separation of *T. wallichiana* from

an unresolved group of *T. baccata*, *T. canadensis* and *T. cuspidata* on the other side. The other species are found between these groups. The *ITS* sequence haplotypes are largely species specific except sequence 1, 2 and 11. Sequence 11 includes *T. cuspidata* and *T. ×media*, sequence 1 is the most common haplotype including representatives from *T. baccata*, *T. canadensis*, *T. cuspidata* and sequence 2 includes *T. floridana* and *T. globosa*.

4.3. Species Delimitation

Some authors have argued that all *Taxus* should be combined into a single species [2–5], but our results, combined with morphological and geographical evidence, support the division of *Taxus*. If we compare the species distribution map with the TCS network (Figure 1), we can see that it is possible that the groupings can partially be explained by historical biogeographical processes, including continental drift and realms. The TCS network groups *T. baccata*, *T. canadensis*, *T. cuspidata* and hybrids together, and these species grow in broadly similar biomes and latitudes. *Taxus brevifolia*, *T. floridana* and *T. globosa* are closely related in the TCS network and are all North American. One might expect that *T. canadensis* would be included in this group. However, if we take continental drift into account, it is not surprising that *T. canadensis* groups closely with *T. baccata*, as their separation could have been caused by vicariance as North America separated from Eurasia during the Cenozoic era. Similar patterns are known for other tree groups, such as *Platanus* [59]. *Taxus wallichiana* and *T. sumatrana* group together and are Asian, and Indonesian, respectively. It is possible that they were formed via allopatric speciation from a common ancestor, such as *T. wallichiana* diversifying into Indonesia to become *T. sumatrana*. Alternatively, this pattern could be explained by long distance dispersal (e.g., via zoochory) and subsequent speciation. Female yews produce fruit which are consumed by birds and disperse the seed intact in their faeces [60]. The fruits are eaten by several birds including winter flocking members of the thrush family as well as being hoarded and eaten by rodents [61]. However, Lavabre and García [62] did a study of the seed dispersal patterns of *T. baccata* across Spain and showed that the spatial distribution of the seeds in the landscape was heterogeneous with the majority of the seeds consistently dispersed into forested microhabitats and almost none outside the forest. The results suggest that this generalized spatially restricted dispersal contributes to the lack of population range expansion. This could explain the geographical separation between *T. brevifolia* and *T. canadensis* by the American prairies; and *T. baccata* with *T. cuspidata* by the European and Russian steppes. A circumpolar distribution map of *Taxus* species from Hultén and Fries [63] indicates interglacial records of *Taxus* on the European steppes. These fossil records could show a link between *T. baccata* and *T. cuspidata*.

Taxus baccata, *T. canadensis* and *T. cuspidata* are problematic to differentiate using DNA sequence evidence alone but are sufficiently distinct in morphology and geographical distribution to merit species status. Other studies have provided evidence for the species status of several taxa [64]. For example, Shah et al. [56] strongly supported the distinctness of *T. baccata*, *T. wallichiana* and *T. fuana*. Spjut [8] and Spjut [65] classified 24 species and 55 varieties into three groups according to differences in leaf epidermal and stomatal features recognizing; (1) a *Wallichiana* group with subgroups *wallichiana* and *chinensis*; (2) a *Baccata* group with subgroups *baccata* and *cuspidata* and (3) a *Sumatrana* group (not divided). Our DNA studies and assessments of leaf anatomy (Supplementary Table S2; Supplementary Figure S7a–e) showed support for the Groups 1 and 2 of Spjut, but not Group 3. Some of the problems with the monophyly of species in the *ITS* tree could be explained by difficulties in taxon identification on the basis of morphology. Thus, a species identified as *T. canadensis* on the basis of morphology might actually be a *T. baccata* on the basis of DNA or anatomical evidence. A comprehensive paper on DNA barcoding in Euroasian *Taxus* has been published by Liu et al. [64], which highlights the use of both, *ITS* and *trnL-F* regions for correct taxon identification.

A subsample of the *Taxus* samples collected in the National Botanic Gardens, Glasnevin, Ireland, were identified to species, in situ, according to the key provided by Farjon [35]. This was very difficult to do as the different species all look very similar, due to phenotypic plasticity. For example, one of Farjon's characters for identification is the leaves on the lateral branchlets arranged or not arranged in

a V-formation. It was very difficult to assess some samples in this field as the V-formation was not very convincing in some specimens. Other morphological characters frequently used to identify *Taxus* species, include leaf shape and size, leaf buds and scales and several leaf anatomical characters [6,35,65]. Spjut [8], Spjut [65] used leaf anatomical characters to assist in species identification. The leaf samples were taken in our studies and epidermal cell patterns, and rows of stomata and papillae were visualized using cellulose acetate impressions. These characters were used in association with the key of Spjut [65] to identify the species. However, it is very easy to misinterpret Spjut's key, as phrases were used which could be easily misinterpreted, such as "papillae are nearly medial" and leaves are "usually revolute". These are not distinct traits so could be interpreted differently from person to person. Also, in some samples, the midrib was mostly smooth with papillae only present in parts of the midrib. Elpe et al. [54] developed a new identification key, based on leaf anatomical characters, using fluorescence microscopy. They found the presence of papillae on the abaxial midrib and on the adaxial leaf surface of *T. brevifolia*, to be a useful tool to separate *T. brevifolia*, *T. floridana*, *T. globosa* and *T. wallichiana* from other species. However, no differences were found between species, which had a papillose midrib, nor species which lacked this character. The key they produced does group *T. baccata* with *T. canadensis* and *T. cuspidata*, which further confirms our results. More data is needed for some species and this is important for conservation and utilization through horticulture or medicine. Therefore, we can conclude that it is insufficient to rely solely on morphological or anatomical characters for taxonomic identification of *Taxus* species and that those data need to be supplemented with DNA sequencing for the highest accuracy in species delimitation.

4.4. Hybridization

A further complication in phylogenetic reconstruction and species identification is *ITS* copy repeat heterogeneity. Repeat units of nrDNA are typically homogenized by concerted evolution, so that only one predominant copy is present [31,66,67]. This can cause complications in the interpretation of *ITS* sequences from closely related taxa. For example, in a hybrid line that has undergone subsequent cycles of sexual reproduction, the process of concerted evolution may homogenize copy types but sometimes favors one parental type over the other [30]. In the case of F1 hybrids, concerted evolution could not have occurred by unequal crossing over, and two copy types, corresponding to the two parental species, might be detectable. However, some degree of concerted evolution may have occurred by gene conversion in non-F1 material. Nuclear DNA sequences, such as *ITS*, are also subject to recombination and, following a number of generations, individual repeats of the *ITS* sequence cannot only vary from each other, but can also become highly heterogeneous themselves [31]. The repeat units can, therefore, become a mosaic of nucleotides from both, parental types, such that the original types are not easily distinguished [68]. We found that many *ITS* PCR products could not be sequenced without molecular cloning, which supports the evidence for considerable sequence heterogeneity within some individuals. However, the heterogeneity also presented an opportunity to study hybridization because different repeat types could be assigned to different parents of putative hybrid taxa (*T. ×media* and *T. ×hunnewelliana*).

Sequence heterogeneity was detected in the uncloned *ITS* sequences of *T. ×media* and *T. ×hunnewelliana*. These putative hybrids had previously been determined from morphological studies Collins et al. [1]. Polymorphisms were detected at several nucleotide sites and these can be mapped to the corresponding bases in their parental sequences (Figure 5) or cloned sequences from the same amplicon. This provides evidence in support of their hybrid status. *Taxus ×hunnewelliana* is a hybrid of *T. cuspidata* × *T. canadensis* and *T. ×media* is a hybrid of *T. baccata* × *T. cuspidata*. This finding supports other work, especially by Collins et al. [1], but needs to be interpreted carefully given the lack of resolution in the *T. baccata*, *T. canadensis* and *T. cuspidata* group. Thus, given our findings and those of Collins et al. [1], it seems likely that hybridization and introgression is common among these three species and that they are not entirely distinct from each other.

5. Conclusions

We recognize nine *Taxus* species, based on our results and the findings of others (*T. baccata*, *T. brevifolia*, *T. canadensis*, *T. cuspidata*, *T. floridana*, *T. fauna*, *T. globosa*, *T. sumatrana* and *T. wallichiana*) have determined that some broad species groupings are consistent with their historical biogeography. We have also found evidence of considerable evolutionary reticulation that complicates the taxonomic understanding of the group. A broad phylogenetic framework of *Taxus* has, therefore, been provided to help guide comparative biological studies on the genus. For example, an accurate phylogeny is required to understand the evolution of the genes determining paclitaxel production (syn. Taxol), a chemical used for the treatment of ovarian, breast and lung cancer [69–71]. The results are also important from a conservation perspective and horticultural trade where clear taxonomic understanding is required [20,72–75].

Supplementary Materials: The following are available online at <http://www.mdpi.com/2311-7524/6/1/19/s1>, Figure S1: Bayesian inference phylogenetic reconstruction of Taxaceae based on *trnL* and *trnL-F* plastid DNA, Figure S2: Maximum likelihood phylogenetic reconstruction of Taxaceae based on *trnL* and *trnL-F* plastid DNA, Figure S3: Bayesian analysis of *trnL-F* data including *Taxus* and *Pseudotaxus* only, Figure S4: ML bootstrap consensus tree of *nrITS* sequence data for *Taxus* and *Pseudotaxus* only, Figure S5: Bayesian analysis of *nrITS* sequence data for *Taxus* and *Pseudotaxus* only, Figure S6: *trnL* intron and *trnL-F* haplotype TCS analysis, Figure S7: Leaf anatomy of *Taxus*. Table S1a,b: Sequences used from GenBank for a) *nrITS* and b) *trnL-F*, Table S2: Leaf anatomy data for *Taxus* species.

Author Contributions: Conceptualization, T.R.H. and I.L.I.H.; methodology, P.C., L.K., J.C.C., and T.R.H.; writing—original draft preparation, P.C.; writing—review and editing, T.R.H., J.C.C., and I.L.I.H.; funding acquisition, I.L.I.H. and T.R.H. All authors have read and agreed to the published version of the manuscript.

Funding: This research was funded by Enterprise Ireland Basic and Strategic Grant SC/199/458 and the Department of Botany Trinity College Dublin.

Acknowledgments: We thank Colin Kelleher, National Botanic Garden, Glasnevin, Ireland for help with sampling and Mark Chase, Royal Botanic Gardens, Kew, UK, for help with the DNA sequencing of some samples.

Conflicts of Interest: The authors declare no conflict of interest.

References

- Collins, D.; Mill, R.R.; Möller, M. Species separation of *Taxus baccata*, *T. canadensis*, and *T. cuspidata* (Taxaceae) and origins of their reputed hybrids inferred from RAPD and cpDNA data. *Am. J. Bot.* **2003**, *90*, 175–182. [[CrossRef](#)] [[PubMed](#)]
- Pilger, R. *Taxaceae*; W. Engelmann: Leipzig, Germany, 1903.
- Elwes, H.J.; Henry, A. *The Trees of Great Britain*; SR Publishers Ltd.: Edinburgh, Scotland, 1906; Volume 1, pp. 98–126.
- Dempsey, D.; Hook, I. Yew (*Taxus*) species—Chemical and morphological variations. *Pharm. Biol.* **2000**, *38*, 274–280. [[CrossRef](#)]
- Dempsey, D. Factors Affecting Paclitaxel Content in Yew. Ph.D. Thesis, Trinity College Dublin, The University of Dublin, Dublin, Ireland, 2000.
- Cope, E.A. Taxaceae: The genera and cultivated species. *Bot. Rev.* **1998**, *64*, 291–322. [[CrossRef](#)]
- Farjon, A. *World Checklist and Bibliography of Conifers*, 2nd ed.; Royal Botanic Gardens, Kew: Richmond, UK, 1998.
- Spjut, R.W. A phytogeographical analysis of *Taxus* (Taxaceae) based on leaf anatomical characters. *J. Bot. Res. Inst. Tex.* **2007**, *1*, 291–332.
- The Plant List. Version 1.1. Published on the Internet. 2013. Available online: <http://www.theplantlist.org/> (accessed on 3 September 2018).
- Li, J.; Davis, C.C.; Del Tredici, P.; Donoghue, M.J. Phylogeny and biogeography of *Taxus* (Taxaceae) inferred from sequences of the internal transcribed spacer region of nuclear ribosomal DNA. *Harv. Pap. Bot.* **2001**, *6*, 267–274.
- Appendino, G. The phytochemistry of the yew tree. *Nat. Prod. Rep.* **1995**, *12*, 349–360. [[CrossRef](#)]

12. Lanker, U.; Malik, A.R.; Gupta, N.K.; Butola, J.S. Natural regeneration status of the endangered medicinal plant, *Taxus baccata* Hook. F. syn. *T. wallichiana*, in northwest Himalaya. *Int. J. Biodivers. Sci. Ecosyst. Serv. Manag.* **2010**, *6*, 20–27. [[CrossRef](#)]
13. Thomas, P.; Farjon, A. *Taxus wallichiana*. The IUCN Red List of Threatened Species. 2011. Available online: <http://dx.doi.org/10.2305/IUCN.UK.2011-2.RLTS.T46171879A9730085.en> (accessed on 1 November 2018).
14. Spector, T.; Thomas, P.; Determann, R. *Taxus floridana*. The IUCN Red List of Threatened Species. 2011. Available online: <http://dx.doi.org/10.2305/IUCN.UK.2011-2.RLTS.T30965A9584928.en> (accessed on 1 November 2018).
15. Thomas, P.; Li, N.; Christian, T. *Taxus chinensis*. The IUCN Red List of Threatened Species. 2013. Available online: <http://dx.doi.org/10.2305/IUCN.UK.2013-1.RLTS.T42548A2987120.en> (accessed on 1 November 2018).
16. Thomas, P. *Taxus globosa*. The IUCN Red List of Threatened Species. 2013. Available online: <http://dx.doi.org/10.2305/IUCN.UK.2013-1.RLTS.T30724A2795235.en> (accessed on 1 November 2018).
17. Thomas, P. *Taxus brevifolia*. The IUCN Red List of Threatened Species. 2013. Available online: <http://dx.doi.org/10.2305/IUCN.UK.2013-1.RLTS.T34041A2841142.en> (accessed on 1 November 2018).
18. Yang, L.; Christian, T.; Li, N. *Taxus mairei*. The IUCN Red List of Threatened Species. 2013. Available online: <http://dx.doi.org/10.2305/IUCN.UK.2013-1.RLTS.T191659A1991533.en> (accessed on 1 November 2018).
19. Thomas, P. *Taxus contorta*. The IUCN Red List of Threatened Species. 2011. Available online: <http://dx.doi.org/10.2305/IUCN.UK.2011-2.RLTS.T39147A10170545.en> (accessed on 1 November 2018).
20. Shah, A.; Li, D.-Z.; Gao, L.-M.; Li, H.-T.; Möller, M. Genetic diversity within and among populations of the endangered species *Taxus fuana* (Taxaceae) from Pakistan and implications for its conservation. *Biochem. Syst. Ecol.* **2008**, *36*, 183–193. [[CrossRef](#)]
21. Chaw, S.M.; Long, H.; Wang, B.S.; Zharkikh, A.; Li, W.H. The phylogenetic position of Taxaceae based on 18S ribosomal—RNA sequences. *J. Mol. Evol.* **1993**, *37*, 624–630. [[CrossRef](#)]
22. Cheng, Y.; Nicolson, R.G.; Tripp, K.; Chaw, S.-M. Phylogeny of Taxaceae and Cephalotaxaceae genera inferred from chloroplast *matK* gene and nuclear rDNA ITS region. *Mol. Phylogenetics Evol.* **2000**, *14*, 353–365. [[CrossRef](#)]
23. Hao, D.C.; Huang, B.; Yang, L. Phylogenetic relationships of the genus *Taxus* inferred from chloroplast intergenic spacer and nuclear coding DNA. *Biol. Pharm. Bull.* **2008**, *31*, 260–265. [[CrossRef](#)] [[PubMed](#)]
24. Appendino, G. Taxol (paclitaxel): Historical and ecological aspects. *Fitoterapia* **1993**, *64*, 2–25.
25. Florin, R. Evolution in Cordaites and Conifers. *Acta Horti Berginal* **1951**, *17*, 259–388.
26. Hartzell, H.J. *The Yew Tree: A Thousand Whispers*; Hulogosi: Eugene, OR, USA, 1991.
27. Taberlet, P.; Gielly, L.; Pautou, G.; Bouve, J. Universal primers for amplification of three non-coding regions of chloroplast DNA. *Plant Mol. Biol.* **1991**, *17*, 1105–1109. [[CrossRef](#)]
28. Sun, Y.; Skinner, D.Z.; Liang, G.H.; Hulbert, S.H. Phylogenetic analysis of sorghum and related taxa using internal transcribed spacers of nuclear ribosomal DNA. *Theor. Appl. Genet.* **1994**, *89*, 26–32. [[CrossRef](#)]
29. Baldwin, B.G.; Sanderson, M.J.; Porter, J.M.; Wojciechowski, M.F.; Campbell, C.S.; Donoghue, M.J. The ITS region of nuclear ribosomal DNA—A valuable source of evidence on angiosperm phylogeny. *Ann. Mo. Bot. Gard.* **1995**, *82*, 247–277. [[CrossRef](#)]
30. Wendel, J.F.; Schnabel, A.; Seelanan, T. An unusual ribosomal DNA-sequence from *Gossypium gossypioides* reveals ancient, cryptic, intergenomic introgression. *Mol. Phylogenetics Evol.* **1995**, *4*, 298–313. [[CrossRef](#)]
31. Hodkinson, T.R.; Chase, M.W.; Takahashi, C.; Leitch, I.J.; Bennett, M.D.; Renvoize, S.A. The use of DNA sequencing (ITS and trnL-F), AFLP, and fluorescent in situ hybridization to study allopolyploid *Miscanthus* (Poaceae). *Am. J. Bot.* **2002**, *89*, 279–286. [[CrossRef](#)]
32. Carolan, J.C.; Hook, I.L.; Chase, M.W.; Kadereit, J.W.; Hodkinson, T.R. Phylogenetics of *Papaver* and related genera based on DNA sequences from ITS nuclear ribosomal DNA and plastid *trnL* intron and *trnL-F* intergenic spacers. *Ann. Bot.* **2006**, *98*, 141–155. [[CrossRef](#)]
33. Hao, D.C.; Xiao, P.G.; Huang, B.L.; Ge, G.B.; Yang, L. Interspecific relationships and origins of Taxaceae and Cephalotaxaceae revealed by partitioned Bayesian analyses of chloroplast and nuclear DNA sequences. *Plant Syst. Evol.* **2008**, *276*, 89–104. [[CrossRef](#)]
34. Li, N.; Fu, L.K. Notes on gymnosperms 1. Taxonomic treatments of some Chinese conifers. *Novon* **1997**, *7*, 261–264.
35. Farjon, A. *Handbook of the World's Conifers*; EJ Brill: Leiden, The Netherlands, 2010; Volume 1, pp. 1–1111.

36. Doyle, J.; Doyle, J. A rapid DNA isolation procedure for small quantities of fresh leaf tissue. *Phytochem. Bull.* **1987**, *19*, 11–15.
37. Gawel, N.J.; Jarret, R.L. A modified CTAB DNA extraction procedure for Musa and Ipomoea. *Plant Mol. Biol. Report.* **1991**, *9*, 262–266. [[CrossRef](#)]
38. Hodkinson, T.R.; Waldren, S.; Parnell, J.A.N.; Kelleher, C.T.; Salamin, K.; Salamin, N. DNA banking for plant breeding, biotechnology and biodiversity evaluation. *J. Plant Res.* **2007**, *120*, 17–29. [[CrossRef](#)] [[PubMed](#)]
39. Liston, A.; Robinson, W.A.; Oliphant, J.M.; Alvarez-Buylla, E.R. Length variation in the nuclear ribosomal DNA internal transcribed spacer region of non-flowering seed plants. *Syst. Bot.* **1996**, *21*, 109–120. [[CrossRef](#)]
40. Kumar, S.; Stecher, G.; Tamura, K. MEGA 7: Molecular Evolutionary Genetics Analysis, version 7 for bigger data sets. *Mol. Biol. Evol.* **2016**, *33*, 1870–1874. [[CrossRef](#)]
41. Ronquist, F.; Huelsenbeck, J.P. MrBayes 3: Bayesian phylogenetic inference under mixed models. *Bioinformatics* **2003**, *19*, 1572–1574. [[CrossRef](#)]
42. Salamin, N.; Hodkinson, T.R.; Savolainen, V. Towards building the tree of life: A simulation study for all angiosperm genera. *Syst. Biol.* **2005**, *54*, 183–196. [[CrossRef](#)]
43. Leigh, J.W.; Bryant, D. Popart: Full-feature software for haplotype network construction. *Methods Ecol. Evol.* **2015**, *6*, 1110–1116. [[CrossRef](#)]
44. Clement, M.J.; Snell, Q.; Walker, P.; Posada, D.; Crandall, K.A. TCS: Estimating gene genealogies. In Proceedings of the 16th International Parallel and Distributed Processing Symposium, Fort Lauderdale, FL, USA, 1 April 2002; pp. 1–7.
45. Sarvella, P.; Meyer, J.R.; Owings, A. A scotch tape method for counting or measuring stomata. *Crop Sci.* **1961**, *1*, 81–82. [[CrossRef](#)]
46. Bandelt, H.-J.; Forster, P.; Röhl, A. Median-joining networks for inferring intraspecific phylogenies. *Mol. Biol. Evol.* **1999**, *16*, 37–48. [[CrossRef](#)] [[PubMed](#)]
47. Clement, M.; Posada, D.; Crandall, K.A. TCS: A computer program to estimate gene genealogies. *Mol. Ecol.* **2000**, *9*, 1657–1659. [[CrossRef](#)] [[PubMed](#)]
48. Christenhusz, M.J.M.; Reveal, J.L.; Farjon, A.; Gardner, M.F.; Mill, R.R.; Chase, M.W. A new classification and linear sequence of extant gymnosperms. *Phytotaxa* **2011**, *19*, 55–70. [[CrossRef](#)]
49. Price, R.A. Generic and familial relationships of the Taxaceae from *rbcL* and *matK* sequence comparisons. In Proceedings of the Fourth International Conifer Conference: Conifers for the Future? Wye College, UK, 30 September 2003; pp. 235–237.
50. Fu, L.; Li, N.; Mill, R.R. Taxaceae. *Flora China* **1999**, *4*, 89–96.
51. Auders, A.G.; Spicer, D.P. *Royal Horticultural Society Encyclopedia of Conifers: A Comprehensive Guide to Cultivars and Species*; Royal Horticultural Society: London, UK, 2012.
52. Farjon, A. *Handbook of the World's Conifers*; EJ Brill: Leiden, The Netherlands, 2010; Volume 2.
53. Eckenwalder, J.E. *Conifers of the World: The Complete Reference*; Timber Press: Portland, OR, USA, 2009.
54. Elpe, C.; Knopf, P.; Stutzel, T.; Schulz, C. Diversity and evolution of leaf anatomical characters in Taxaceae s.l.—fluorescence microscopy reveals new delimitating characters. *J. Plant Res.* **2018**, *131*, 125–141. [[CrossRef](#)]
55. Ghimire, B.; Heo, K. Cladistic analysis of Taxaceae s.l. *Plant Syst. Evol.* **2014**, *300*, 217–223. [[CrossRef](#)]
56. Shah, A.; Li, D.-Z.; Möller, M.; Gao, L.-M.; Hollingsworth, M.L.; Gibby, M. Delimitation of *Taxus fuana* Nan Li & RR Mill (Taxaceae) based on morphological and molecular data. *Taxon* **2008**, *57*, 211–222.
57. Kelleher, C.T.; Hodkinson, T.R.; Kelly, D.L.; Douglas, G.C. Characterisation of chloroplast DNA haplotypes to reveal the provenance and genetic structure of oaks in Ireland. *For. Ecol. Manag.* **2004**, *189*, 123–131. [[CrossRef](#)]
58. McGrath, S.; Hodkinson, T.R.; Barth, S. Extremely high cytoplasmic diversity in natural and breeding populations of *Lolium* (Poaceae). *Heredity* **2007**, *99*, 531–544. [[CrossRef](#)]
59. Feng, Y.; Oh, S.-H.; Manos, P.S. Phylogeny and historical biogeography of the genus *Platanus* as inferred from nuclear and chloroplast DNA. *Syst. Bot.* **2005**, *30*, 786–799. [[CrossRef](#)]
60. Snow, B.; Snow, D. *Birds Berries*; A.&C Black: London, UK, 2010.
61. Williamson, R. *The Great Yew Forest: The Natural History of Kingley Vale*; MacMillan: London, UK, 1978.
62. Lavabre, J.E.; García, D. Geographic consistency in the seed dispersal patterns of *Taxus baccata* L. in the Iberian Peninsula. *For. Syst.* **2015**, *24*, e040. [[CrossRef](#)]
63. Hultén, E.; Fries, M. *Atlas of North European Vascular Plants North of the Tropic of Cancer*; Koeltz Scientific: Parsberg, Germany, 1986.

64. Liu, J.; Möller, M.; Gao, L.-M.; Zhang, D.-Q.; Li, D.-Z. DNA barcoding for the discrimination of Eurasian yews (*Taxus L.*, Taxaceae) and the discovery of cryptic species. *Mol. Ecol. Resour.* **2011**, *11*, 89–100. [[CrossRef](#)] [[PubMed](#)]
65. Spjut, R.W. Taxonomy and nomenclature of *Taxus* (Taxaceae). *J. Bot. Res. Inst. Tex.* **2007**, *1*, 203–289.
66. Elder, J.F., Jr.; Turner, B.J. Concerted evolution of repetitive DNA sequences in eukaryotes. *Q. Rev. Biol.* **1995**, *70*, 297–320. [[CrossRef](#)] [[PubMed](#)]
67. Teerawatananon, A.; Jacobs, S.W.; Hodkinson, T.R. Phylogenetics of Panicoideae (Poaceae) based on chloroplast and nuclear DNA sequences. *Telopea* **2011**, *13*, 115–142. [[CrossRef](#)]
68. Wendel, J.F.; Doyle, J.J. *Phylogenetic Incongruence: Window into Genome History and Molecular Evolution, in Molecular Systematics of Plants II*; Springer: Boston, MA, USA, 1998; pp. 265–296.
69. McGuire, W.P.; Rowinsky, E.K.; Rosenshein, N.B.; Grumbine, F.C.; Ettinger, D.S.; Armstrong, D.K.; Donehower, R.C. Taxol: A unique antineoplastic agent with significant activity in advanced ovarian epithelial neoplasms. *Ann. Intern. Med.* **1989**, *111*, 273–279. [[CrossRef](#)] [[PubMed](#)]
70. Holmes, F.A.; Walters, R.S.; Theriault, R.L.; Forman, A.D.; Newton, L.K.; Raber, M.N.; Buzdar, A.U.; Frye, D.K.; Hortobagyi, G.N. Phase II Trial of Taxol, an active drug in the treatment of metastatic breast cancer. *J. Natl. Cancer Inst.* **1991**, *83*, 1797–1805. [[CrossRef](#)] [[PubMed](#)]
71. Bristol Myers Squibb. *Package Insert for TAXOL® (Paclitaxel) Injection*; Bristol Myers Squibb: New York, NY, USA, 2011.
72. Elkassaby, Y.A.; Yanchuk, A.D. Genetic diversity, differentiation, and genetic diversity, differentiation, and inbreeding in Pacific yew from British Columbia. *J. Hered.* **1994**, *85*, 112–117. [[CrossRef](#)]
73. Kwit, C.; Horvitz, C.C.; Platt, W.J. Conserving slow-growing, long-lived tree species: Input from the demography of a rare understory conifer, *Taxus floridana*. *Conserv. Biol.* **2004**, *18*, 432–443. [[CrossRef](#)]
74. Mohapatra, K.P.; Sehgal, R.N.; Sharma, R.K.; Mohapatra, T. Genetic analysis and conservation of endangered medicinal tree species *Taxus wallichiana* in the Himalayan region. *New For.* **2009**, *37*, 109–121. [[CrossRef](#)]
75. Zhang, J.-T.; Ru, W. Population characteristics of endangered species *Taxus chinensis* var. *mairei* and its conservation strategy in Shanxi, China. *Popul. Ecol.* **2010**, *52*, 407–416. [[CrossRef](#)]



© 2020 by the authors. Licensee MDPI, Basel, Switzerland. This article is an open access article distributed under the terms and conditions of the Creative Commons Attribution (CC BY) license (<http://creativecommons.org/licenses/by/4.0/>).